

Western Australia

BKBHOLIDAYS.COM



BKB

HOLIDAYS

WESTERN AUSTRALIA
2024-2025





ABOUT BKB HOLIDAYS

Established in 1996, BKB Holidays began as a specialist travel company with a passion for delivering unique and memorable holidays within the wild and breathtaking Kimberley region of Western Australia.

We've come a long way since then and our product range now encompasses Western Australia, Northern Territory, South Australia, Indian Ocean Territories (Christmas and Cocos Keeling Islands), Bali, Singapore and Vietnam. Destinations with endless possibilities that will capture your imagination no matter your journey, we understand no two travellers are the same.

Our talented team of specialists take pride in using their expertise to create packages that will spark your curiosity and transform your travel plans into reality. We'll prove why we are the go-to travel company, offering a worry-free and friendly booking experience so you can relax and know that you're in good hands.

Let us share our passion and knowledge to create the exceptional.

Western Australia

Our Western Australia brochure is filled to the brim with a range of products and packages designed to assist you in planning a memorable holiday. Whether you're looking for a short break or a detailed itinerary, we can help. You'll find accommodation options, day trips, extended tours, rail and cruising. We have included a specialised area full of self-drive itineraries for those travellers wanting more freedom to drive themselves and stay in pre-booked accommodation along the way. If it's not in our brochure, it doesn't mean we can't do it – call us to help you plan your dream trip!



Contents

Top Experiences in WA	4-5	The Pilbara	
Self Drive Tours and WA Map	6-8	Pilbara Information & Map	45
10 Day South West Edge	7	Pilbara Accommodation	46-47
8 Day Coral Coast Highway	7	Coral Coast	
13 Day Gibb River Road	8	Coral Coast Information & Map	48
16 Day North West Explorer	8	Coral Coast Accommodation & Tours	49-54
Car Hire	9	Perth and Surrounds	
Campervan Hire and Distances	10	Welcome to Perth	55
Rail Journeys		Perth & Surrounds Accommodation	56-59
The Indian Pacific	11	Perth & Surrounds Day Tours	60-61
Kimberley Cruising	12-19	Rottneet Island	62-63
Broome and The Kimberley		South West and Great Southern	
The Kimberly Information & Map	20	Welcome to the South West	64
Welcome to Broome	21	The South West	65-68
Broome Accommodation	22-25	The Great Southern Region	68-69
Broome Tours	26-30	School Holidays & Calendar	70
Dampier Peninsula	31	Booking Conditions	71
Kimberley Extended Touring	32-34		
West Kimberley Accommodation	35		
Gibb River Road Accommodation	36-38		
East Kimberley	39-40		
Kununurra Accommodation & Tours	41-44		

TOP EXPERIENCES IN WESTERN AUSTRALIA

Western Australia is a place unlike any other. A vast, rugged wilderness encompassing a variety of changing landscapes. From lush tall-timber forests and turquoise-blue waters with pristine beaches in the south to the red cliffs and rugged coastline of the Kimberley Region.

Start your journey in the sparkling capital city of Perth, making time for a day trip to Rottnest, then venturing south to the popular Margaret River Region, Great Southern and beyond. For those with more time to spare, head north and experience the unique remote landscapes of the outback regions with bountiful flora and fauna. Stop at quirky small towns and make lifelong friends with fellow travellers. If 4WDing or road trips are your thing, there's plenty of fun to be had with our self-drive itineraries. Pack your sense of adventure, there's something for everyone in Western Australia.

PERTH AND SURROUNDS

Experience a city of light, colour and culture in Perth. Blessed by year-round warm weather, Perth experiences more sunny days than any other capital city in Australia. Stroll through the shopping and dining precincts of the CBD, Northbridge and Leederville or venture west to the coastline and explore Perth's many white-sand beaches, from popular Cottesloe to vibrant Scarborough, quirky Fremantle and beyond.



ROTTNEST ISLAND

Escape to Rottnest Island (Wadjemup), Perth's favourite island playground. Just a short 40 minute ferry ride from the mainland (Fremantle or Hillarys), hire a bike and explore the island's many idyllic beaches and secluded coves, spotting whales, dolphins and fur seals. Before you leave, make sure you get a selfie with one of the local residents, a friendly Quokka!

CORAL COAST, NINGALOO AND EXMOUTH

Discover the underwater enchantment of Ningaloo Reef (Nyinggulu). Here you can swim alongside gentle whale sharks and vibrant marine life along the world's largest fringing coral reef.

Visit the towns of Exmouth and nearby Coral Bay, unique coastal communities with a beachy vibe and friendly locals.



BROOME

Start planning your journey to the relaxed tropical oasis of Broome (Rubibi). Embark on an unforgettable adventure visiting pindan red sand beaches, learning more about pearl farming, taking a camel ride along Cable Beach, searching for dinosaur footprints or simply visiting a few local craft breweries for good measure. It won't take you long to slip into 'Broome time' as the locals call it!



THE KIMBERLEY

One of the world's last true wilderness areas, the Kimberley Region in Australia's North West offers wondrous landscapes of ancient rock formations, sparkling waterfalls and unspoilt coastline. See the striking geological formations of the Bungle Bungle Range (Purnululu National Park), soak up the scenery at Lake Argyle or see the highlights of the region by coast on an expedition-style cruise voyage.

THE SOUTH WEST

Set off to the South West to explore pristine white sand beaches, tall-timber forests, award-winning wineries and world-class food producers.

From the vibrant seaside town of Busselton to the laid-back community of Yallingup, there's something for everyone. The Margaret River Region offers many boutique breweries and over 100 cellar doors ready to welcome you.



GREAT SOUTHERN REGION AND ESPERANCE

The Great Southern Region from Walpole to Albany features some of the best beaches you'll find in WA. Explore Greens Pool and Elephant Rocks in Denmark, where huge granite boulders in a hidden cove resemble Elephants marching out to sea. Further afield, Esperance offers the stunning beaches Hellfire Bay and Lucky Bay, famous for its sunbathing Kangaroos.

SELF-DRIVES IN WESTERN AUSTRALIA

Western Australia Map

Enjoy the freedom of a well-planned road trip itinerary

A self-drive holiday is one of the best ways to explore wide-open spaces, coastal highways or city surrounds. We have been assisting travellers with great value itineraries on the famous Gibb River Road and other driving holidays for years. With a range of vehicles and rental conditions, we can help plan your dream road trip with accommodation and sightseeing options. We know the distances, the most suitable vehicle for your journey and tips to keep you safe and comfortable. Enjoy the freedom of a well-planned self-drive holiday, with time for photo stops or getting off the beaten track to explore amazing landscapes.

Our suggested itineraries are a guide to some of the most popular self-drive routes. We can also tailor-make options to suit your needs from day trips to epic adventures. We can advise on the safest ways to plan your journey and ensure you have the time to experience the amazing destinations we have on offer. Contact us for small cars through to full size four-wheel drives and campervans to include in your Western Australia holiday.



Expect memorable moments on a Self-Drive

Starting in Perth, set off and explore the outback, coastline and towering forests. Whether you're after great food and wine, breathtaking landscapes or a slice of history, you'll find an exciting itinerary – or let us design one for you.

Want to drive the Kimberley region but not sure where to start? We are specialists in self-drive itineraries. We know the destinations and distances, have access to vehicles that can be taken off sealed roads and are up to date on the current road conditions. Any of these itineraries can be altered to suit you, whether you want to do less or more or you would like to add additional stays or tours – just ask!



**10
DAYS**

South West Edge - from \$1,496 per person, twin share ^

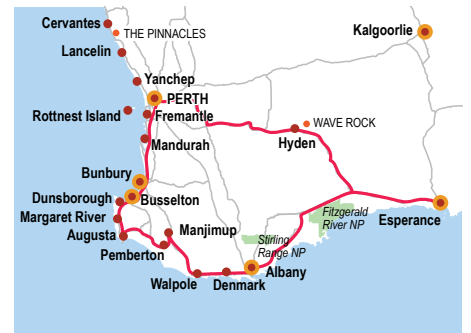
Drive through contrasting landscapes including ancient mountain ranges, towering karri forests and untouched coasts on this epic road trip, with 10 days car hire and 9 nights accommodation.

Itinerary includes

- **Day 1 - 1 Night in Perth at the Quality Hotel Ambassador or similar.** After arriving into Perth collect your hire car and make your way to your hotel for one night.
- **Day 2 & 3 - 2 Nights in Margaret River at Margarets In Town Apartments or similar.** Make your way from Perth to Margaret River via Bunbury. Why not stop off at the Dolphin Discovery Centre or Gnomesville (Dardanup). Day 3 - With plenty of time for tastings at wineries, breweries and distilleries, try some local produce or explore the region's caves.
- **Day 4 - 1 Night in Pemberton at RAC Karri Valley Resort or similar.** Drive through Nannup to Pemberton. Food enthusiasts may also want to head to Manjimup, home to the prized black truffle.
- **Day 5 & 6 - 2 Nights in Albany at Hilton Garden Inn or similar.** On the way to Albany visit the Valley of the Giants Treetop Walk in Walpole with incredible views of the forest. Day 6 - There are plenty of attractions in Albany including The Gap and Natural Bridge

- (keep an eye out for whales during June-December), National ANZAC Centre and Discovery Bay and an old whaling station.
- **Day 7 & 8 - 2 Nights in Esperance at Comfort Inn Bay of Isles or similar.** Leave early and drive through the Porongurup National Park and the Stirling Ranges, stopping to climb Bluff Knoll. Day 8 - Enjoy the beachside town with plenty to see including Lucky Bay, Lake Hillier and Cape Le Grand National Park.
- **Day 9 - 1 Night in Hyden at Wave Rock Motel.** Leaving the charm of Esperance you will be driving to Hyden via Ravensthorpe, look out for the painted Silos. Wildflowers in Spring time are amazing.
- **Day 10 - Visit Wave Rock and also find the Aboriginal hand print art at Mulka's cave.** Head back to Perth, stopping in at the historic town of York on the way.

Add on a Margaret River Eat, Drink and Explore Day Tour from \$160 per person.



**8
DAYS**

Coral Coast Highway - Perth to Exmouth - from \$1,469 per person, twin share ^

Experience the Coral Coast Highway, starting in Perth, driving to the gateway to the Ningaloo Reef - Exmouth or vice versa. Special reduced one way fees apply from April to October for certain car categories. Optional highlights include The Pinnacles and Monkey Mia, home to pods of dolphins which visit the bay every day. Includes 8 days car hire and 7 nights accommodation.

Itinerary includes:

- **Day 1 - 1 Night in Perth at the Quality Hotel Ambassador.** Arrive in Perth and head to your accommodation.
- **Day 2 - 1 Night in Geraldton at The Gerald or similar.** Collect your car in the morning and head north to Geraldton. As you travel along Indian Ocean Drive try your hand at sandboarding on Lancelin's rolling white dunes, or spend some time at the Pinnacles.
- **Day 3 & 4 - 2 Nights in Monkey Mia at RAC Monkey Mia Dolphin Resort.** Continue your journey North to Monkey Mia. You may want to take some time for a slight detour to visit the Pink Lakes of Hutt Lagoon. Day 4 - Enjoy

- a day in Monkey Mia, famed for its local population of bottle nosed dolphins.
- **Day 5 - 1 Night in Carnarvon at the Hospitality Inn Carnarvon or similar.** Known as the fruit bowl of Australia, the journey to Carnarvon is filled with various plantations.
- **Day 6 & 7 - 2 Nights in Exmouth at Potshot Hotel Resort or similar.** Continue your journey north to Exmouth. Day 7 - The day is yours to discover this amazing town. If the season is right, you may choose to do a Whale Shark Swim, or perhaps a glass bottom boat tour is more for you? **Either way - ask us about some of the incredible activities available in Exmouth and Coral Bay.**
- **Day 8 -** If you have time, Cape Range National Park is just 40 minutes from Exmouth. With an abundance of flora and fauna and 50 km of pristine beaches, it can certainly make for a spectacular day tour!

Please note:

* One-way car rental fee of approximately \$1,100 is payable direct to car hire company. Other pick up fees may apply. ASK us about the reduced one way fee approx \$400.



SELF-DRIVE ITINERARIES

Gibb River Road Adventure - from \$3,727 per person, twin share^

12 DAYS



Starting and ending in Broome, this itinerary takes in the best of the Kimberley, including the Gibb River Road, El Questro, Tunnel Creek and much more!

Itinerary includes

- **Day 1 - 1 Night in Broome at Oaks Broome Hotel or similar.** Welcome to Broome! Collect your 4WD (12 day rental) and make your way to your hotel.
- **Day 2 & 3 - 2 Nights near Bell Gorge at the Bell Gorge Wilderness Lodge.** Begin your journey from Broome, joining the Gibb River Road to your accommodation. Along the way you may want to visit the Boab Prison Tree. Day 3 - Wake up to incredible views of the King Leopold Escapement. Today, you may wish to take the opportunity to visit some of the nearby gorges (including Bell Gorge) that dot this incredible landscape.
- **Day 4 - 1 Night at Mt Elizabeth Station.** Visit Galvans Gorge and Manning Gorge along the way.
- **Day 5 & 6 - 2 Nights at Emma Gorge, El Questro.** From one slice of paradise to another! You will make the comfortable journey to El Questro. Settle into your accommodation and enjoy the facilities, laze by the pool and perhaps enjoy dinner at their licenced restaurant with a retractable roof for star gazing during dinner (additional expense).

Day 6 - You are spoilt for choice of activities. Popular choices are a cruise through Chamberlain Gorge (\$129pp), Explosion Gorge and Branco's Lookout sunset tour (\$189pp), or perhaps try your hand at Barramundi Fishing on a guided 4WD Tour (from \$339pp).

- **Day 7 & 8 - 2 Nights in Kununurra at the Kununurra Country Club or similar.** After check out make the comfortable journey to Kununurra.
- **Day 8 -** Once again, the East Kimberley is out to impress! Popular options for today are an Ord River and Lake Argyle Cruise and Tour (from \$200pp) or even a scenic flight over the Bungle Bungle Ranges (from \$435pp).
- **Day 9 - 1 Night at Fitzroy Crossing at the Fitzroy River Lodge.** Start your journey West towards Broome, passing through Halls Creek. Perhaps include an optional guided tour of Mimbi Caves (pre-booking recommended) prior to arriving in Fitzroy Crossing.
- **Day 10 & 11 - 2 Nights in Broome at Oaks Broome Hotel or similar.** Make your way to Broome, you might like to take the time to explore Tunnel Creek and/or Windjana Gorge. Upon arriving into Broome, get ready to relax and enjoy your stunning surroundings alongside Cable Beach. Broome has so much to offer - history, eco tours, camel rides and pearl shopping! Day 11 is yours to enjoy as you please, ask us about our range of incredible day tours.

North West Explorer - Darwin to Broome from \$4,368 per person, twin share^

16 DAYS

See the Top End and the Kimberley in one incredible trip. Prepare to tick all the boxes off your bucket list when seeing rock art in Kakadu, waterfalls and gorges on the Gibb River Road and much more.

Itinerary includes

- 16 Days 4WD hire with unlimited kilometres, from Darwin to Broome.
- 2 Nights in Darwin at the Rydges Darwin Central Hotel. Join a Darwin City Sights tour (optional).
- 2 Nights in Kakadu at the Coinda Lodge Kakadu.
- 1 Night in Katherine at the Nitmiluk Cabins.
- 2 Nights in Kununurra at the Kununurra Country Club and Resort, after crossing the NT/WA border.
- 2 Nights at Emma Gorge, El Questro. Enjoy the facilities, laze by the pool and add on a tour.
- 1 Night at Mt Elizabeth Station, a fully operational cattle station.
- 2 Nights at Bell Gorge Wilderness Lodge. Visit some of the nearby gorges.
- 1 Night in Fitzroy Crossing at the Fitzroy River Lodge. Visit Windjana Gorge and Tunnel Creek before reaching Fitzroy Crossing.
- 2 Nights in Broome at Oaks Broome. Free time to enjoy as you please - ask us about our range of incredible day tours.



Our optional add on tour suggestions
When in Kakadu - Join an optional Yellow Waters Sunrise Cruise (from \$111pp).

When in Katherine - We suggest an optional Nit Nit Dreaming 2 Gorge Cruise (\$100pp)

Ord River Day Tour and Cruise - Take a tour from Kununurra along Lake Argyle, including a stop at the historic Durack Homestead. Return with a cruise along the Ord River spotting wildlife, including crocodiles and enjoying the Kimberley sunset (\$240pp)



Please note: One-way car rental fee of approximately \$1,100 is payable direct to car hire company

AVIS



With convenient locations and a wide range of late model, air conditioned vehicles all across Australia, Avis have the options for you. Discover the region with ease, freedom and style. From Cable Beach to the Outback, go at your own pace to discover this remarkable part of Australia.



Rates Include:

- Unlimited Kilometres
- Standard Loss Damage Waiver
- GST and Admin Fee
- Vehicle Registration Fee
- Concession Recovery Fee

Rates Exclude:

- Excess Reduction fee
- One way rental fee
- Refuelling
- Airport collection/return supplement

Conditions:

- Access to Gibb River Road in Full Sized 4WD only and special rates apply
- Vehicles not permitted on non-gazetted roads
- All rentals subject to Avis terms and conditions
- Credit Card security bond required

Unlimited kms		1-3 Days			4-6 Days			7-13 Days		
Vehicle	Vehicle Code	1 Apr - 30 Nov 24	1-18 Dec 24, 5 Jan-31 Mar 25	19 Dec 24 - 4 Jan 25	1 Apr - 30 Nov 24	1-18 Dec 24, 5 Jan-31 Mar 25	19 Dec 24 - 4 Jan 25	1 Apr - 30 Nov 24	1-18 Dec 24, 5 Jan-31 Mar 25	19 Dec 24 - 4 Jan 25
Intermediate Auto	ICAR	\$80	\$87	\$109	\$74	\$78	\$100	\$69	\$74	\$95
Standard	SCAR	\$89	\$93	\$128	\$79	\$83	\$117	\$77	\$78	\$109
Full Size Van	FVAR	\$124	\$129	\$195	\$111	\$122	\$177	\$106	\$115	\$172
Compact SUV	CVAR	\$89	\$93	\$128	\$79	\$83	\$117	\$77	\$78	\$109
Intermediate SUV	IFAR	\$97	\$117	\$138	\$91	\$110	\$133	\$84	\$104	\$121
Large SUV	FFAR	\$126	\$147	\$163	\$122	\$139	\$152	\$115	\$128	\$145
Full Size 4WD	PFAR	\$152	\$159	\$227	\$137	\$143	\$207	\$131	\$136	\$196

Prices are per vehicle per day based on 24hr hire and are a guide only. Rates are based on metropolitan hire. WA's North West or remote locations, pricing is available on request. Rates are based on downtown pick ups with standard inclusions. Discounted rates for longer durations are available on request. Ask about reduced one way fees for Coral Coast Highway.

Thrifty



Thrifty offers a new and extensive range of current model air-conditioned cars, minibuses and 4WDs from two locations in the Kimberley (Broome and Kununurra) and multiple locations through the NT. Being a part of the Thrifty Northern Territory network – one way rentals are a specialty. Explore the Gibb River Road in a large 4WD, or just take in the wonders of Broome in a current model passenger sedan or wagon.



Rates Include:

- Unlimited Kilometres
- Vehicle Registration Recovery Fee (VRRF)
- GST
- Standard and Third Party Cover
- Administration Recovery Fee (ADMRF)
- All vehicles are air-conditioned
- One Additional Driver.

Rates Exclude:

- Fuel, one way rental fees and optional extras e.g. baby seats
- Minimum age for 4WD hirers is 25 and passenger cars is 21
- Credit card security bond required
- All rentals are subject to Thrifty's Terms and Conditions of Hire
- Damage Recovery Fee and Single Vehicle Accident Fee
- Premium Location Surcharge applies if Standard Account is used at a PLS location
- Tyre and Windscreen Cover not available.

Unlimited kms		1-3 Days			4-6 Days			7-13 Days		
Vehicle	Vehicle Code	1 Apr - 31 May 24	1 Jun - 30 Sep 24	1 Oct 24 - 31 Mar 25	1 Apr - 31 May 24	1 Jun - 30 Sep 24	1 Oct 24 - 31 Mar 25	1 Apr - 31 May 24	1 Jun - 30 Sep 24	1 Oct 24 - 31 Mar 25
Compact - 5 Passenger	H	\$154	\$242	\$148	\$145	\$230	\$139	\$135	\$214	\$128
Full Size Hybrid - 5 Passenger	D2	\$158	\$249	\$153	\$143	\$228	\$138	\$137	\$218	\$131
Compact SUV - 5 Passenger	G	\$169	\$262	\$163	\$152	\$240	\$146	\$139	\$222	\$133
Intermediate SUV AWD - Auto	V	\$171	\$265	\$165	\$157	\$245	\$150	\$145	\$231	\$139
Full Size 8 Seater Van - Auto	T	\$245	\$366	\$238	\$217	\$327	\$210	\$183	\$282	\$177
Large 4WD	J	\$333	\$409	\$323	\$303	\$379	\$296	\$287	\$360	\$279
Premium 4WD	R	\$354	\$431	\$345	\$325	\$401	\$317	\$308	\$355	\$301

Prices are per vehicle per day based on 24hr hire and are a guide only. Rates are based on Broome hire. Kununurra pricing is available on request. Rates are based on PLS inclusive. Discounted rates for longer durations are available on request. Terms and conditions apply.

CAMPER HIRE

Britz Rental Hire



Whether you're after an exciting family getaway, an adventure with mates or an intimate break for two, Britz has the perfect camper for you. Britz is part of THL, the largest commercial RV operator in the world and offers a range of campervans sleeping from two to six people.

Choose from the smaller HiTop or Voyager models without toilet or shower or the popular Venturer or Venturer Plus for 2-3 people with private ensuite. For something a little bigger, look at the Britz Discovery with clever space saving drop-down double bed or the largest campers in the Explorer for four people or Frontier for up to six. Or if you really want to get off the beaten track, check out the 4WD models, with options that include a rooftop tent or ground tent.

Britz operates from 10 branches Australia-wide, including Broome, Perth, Alice Springs, Darwin and Adelaide (along with the east coast).

RATES

HiTop	from \$256 per day
Voyager	from \$263 per day
Trailblazer	from \$319 per day
Safari Alto 4WD	from \$353 per day

Note: Vehicle hire rates are based on a dynamic pricing module. Rates are seasonal, based on the date of booking and should be used as a guide only. Above is based on Broome Depot collection. Perth Depot collection also available. Ask for the most competitive available rate.

RedSands Campers



RedSands Campers understands what it takes to create the perfect 4WD adventure in Australia.

Their knowledge of four wheel driving and camping is reflected in the custom-designed vehicles, which are comfortable and easy to use. Priding themselves in delivering premium products and superior customer service. Best of all, you don't pay any extra for any of this; they provide an all-inclusive offering. They know from their own camping experience that chairs, tables, gas bottle refills, GPS units and bedding should be standard, so they do not charge you extra for these necessities. No charge for one-way rentals or Broome surcharges either.

Depot locations • Perth • Broome • Darwin • Adelaide

RATES

Toyota Land Cruiser Prado 4WD	from \$219 per day
2 Person 4WD Camper	from \$279 per day
5 Person 4WD Camper	from \$279 per day
The Wanderer	from \$349 per day

Western Australia distances by region (in Kilometres)

THE KIMBERLEY

Broome						
221	Derby					
391	256	Fitzroy Crossing				
680	545	289	Halls Creek			
1047	912	656	367	Wyndham		
1032	897	641	352	105	Kununurra	

THE SOUTH WEST

Perth									
167	Bunbury								
222	52	Busselton							
269	100	50	Margaret River						
317	148	95	43	Augusta					
323	162	144	132	125	Pemberton				
419	338	331	341	340	230	Albany			
697	670	697	710	728	643	481	Esperance		

CORAL COAST

Perth										
197	Cervantes									
218	26	Jurien Bay								
350	158	132	Dongara							
414	222	196	65	Geraldton						
569	378	351	220	155	Kalbarri					
847	655	630	450	432	399	Monkey Mia				
890	698	672	541	475	442	350	Carnarvon			
1121	929	903	771	706	673	581	238	Coral Bay		
1248	1056	1030	899	833	800	708	365	152	Exmouth	



JOURNEY BEYOND ABOARD THE INDIAN PACIFIC

A journey aboard the iconic Indian Pacific will whisk you between Perth, Adelaide and Sydney in comfort and style. With epic transcontinental crossings between the Indian and Pacific oceans, step onboard for an all-inclusive rail holiday you'll never forget.

Named for the two oceans the train encounters on its journey, the Indian Pacific travels between Perth, Adelaide and Sydney on a spectacular 4352km crossing.

With its bold wedge-tailed eagle emblem symbolising the scope, range and significance of each epic journey, the Indian Pacific traverses mountain ranges, passes through arid deserts and goldfields, rocky valleys and subtropical savannahs on its transcontinental crossings.

There's no better way to experience the spectacular interior landscape of Australia than by the romance of rail. Choose from one of the following Indian Pacific journeys for the foundation of your adventure.

Indian Pacific			
Timetable	Operates		Departs / Arrives
Sydney - Adelaide - Perth	Operates year round		Departs Wed / Arrives Sat
Perth - Adelaide - Sydney	Operates year round		2024 Departs Sun / Arrives Wed 2025 Departs Sat / Arrives Wed
Prices	Gold Twin	Gold Premium	Platinum Service
2024 Sydney to Perth or vice versa	From \$3,130	N/A	From \$5,220
2025 Sydney to Perth or vice versa	From \$3,290	From \$3,890	From \$5,420
Prices are per person, twin share based on low season 2025/26 Departures Everyday Fare.			

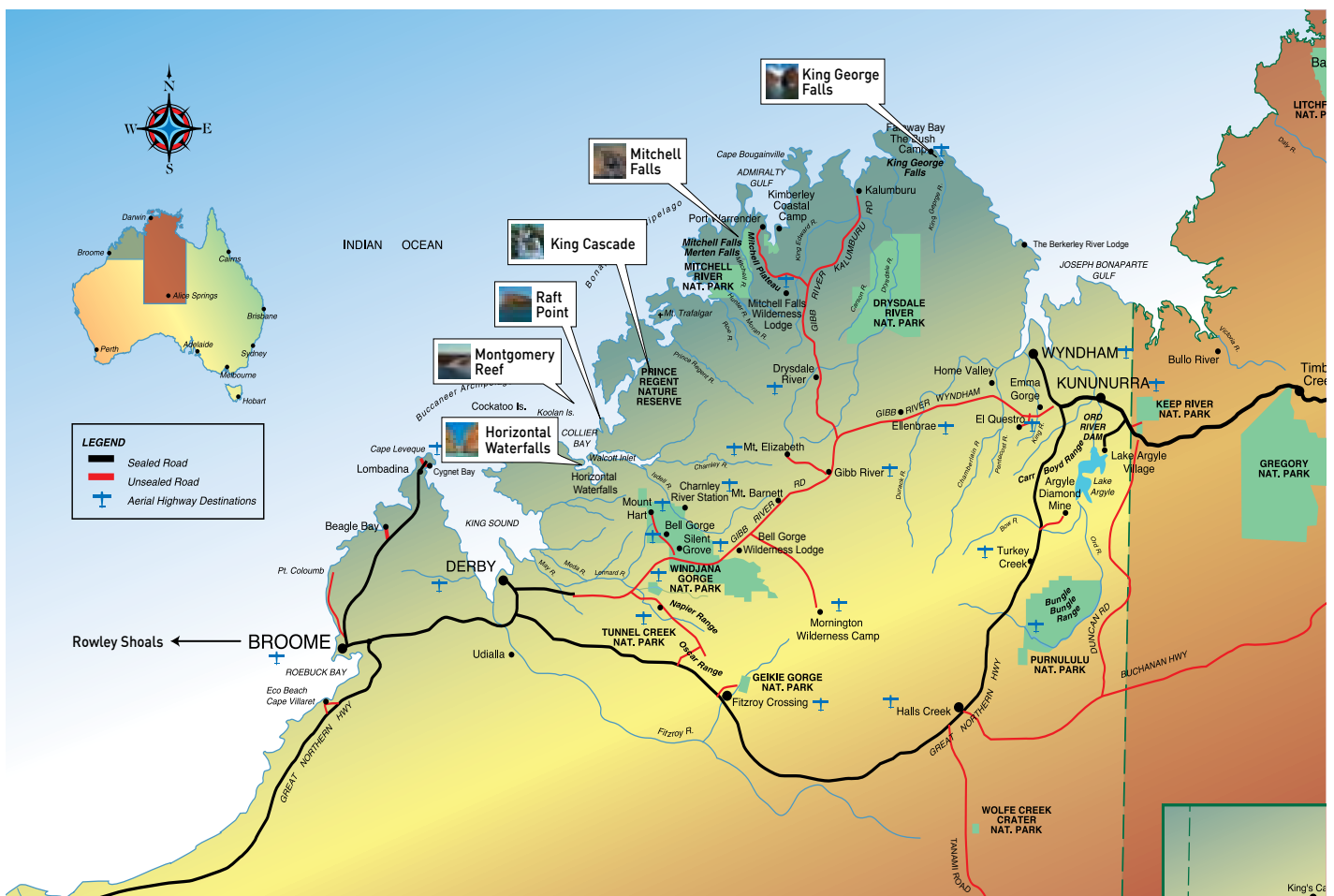


KIMBERLEY CRUISING



With so many cruising options in the Kimberley, it can be difficult to decide which voyage suits you. Here are our tips for narrowing it down.

1. **Reasonable mobility and fitness is required on all Kimberley cruises, some more so than others.** Each boat may have stairs, wet landings and various ways of embarking and disembarking the small excursion vessels. Speak to us about the best option for you. If you have mobility issues, we'd suggest one of the larger vessels.
2. **Decide where you want to go.** Some cruises start and end in Broome, making it easy to add in to any holiday, others start or end in Wyndham and transfer to Kununurra – the perfect starting point to explore El Questro or the Purnululu National Park, while others go as far as Darwin and are great for those wanting to add on The Ghan or a Top End adventure.
3. **Number of passengers.** With anything from 12 to 260 guests, there is plenty of choice. Smaller cruises are generally more flexible and you'll get to know everyone on board, while larger vessels will have more staff and facilities on board.
4. **Pick your travel dates.** March, April and early May give you the chance to see the best waterfalls as the Wet Season concludes. June to August is usually cooler, with days around 30 degrees making it perfect for hiking and relaxing on the beach, while later in the season, you're most likely to spot whales during their migration or maybe even catch a Barramundi!



Coral Expeditions

from \$11,850 per person, twin share



For over 30 years, Coral Expeditions has forged the way in the Kimberley coast on uniquely Australian expeditions between Darwin and Broome.

As the Australian pioneers, we operate the largest season each year between April and September on our fleet of three modern and intimate expedition ships that are purpose built for the region. It is our local expertise and respect for the Kimberley that sets us apart and ensures that we deliver an unrivalled and authentic experience for our guests. Join us in the Kimberley on a classic Australian adventure and find freedom in this vast and remote natural wilderness.

On this 10-night voyage witness the power of nature at the magnificent King George River and its towering twin falls, explore ancient rock art with expert guides, experience the extreme tides at Horizontal Falls, and witness diverse marine life and cascading waters at Montgomery Reef. Later in the season, you may also see the majestic Humpback Whales on their migration north to breeding grounds. Every Kimberley voyage is different. Come and discover the Kimberley for yourself with the pioneers who have been exploring the Kimberley for 30 years!

5 REASONS TO JOURNEY WITH CORAL EXPEDITIONS

Expertise: Coral Expeditions is an experienced, Australian owned & operated cruise line with unrivalled knowledge of the Kimberley region. We offer well-planned itineraries to ensure travellers get the best experience possible.

Small-ship cruising: Coral Expeditions provides small-ship cruises, allowing access to remote and untouched locations that larger ships can't reach. With no more than 120 passengers, this enhances the sense of adventure and intimate experience throughout the cruise.

Immersive experiences: Travelling with Coral Expeditions offers opportunities to be educated by our Guests Lectures & Expedition Team who share their expansive knowledge of the vast & ancient Kimberley.

Knowledgeable guides: The tour guides and experts onboard have real local knowledge about the region's history, geology, and wildlife. They offer insightful commentary and enhance the overall travel experience.

Xplorer Tenders: Our Purpose-built Xplorers are very easy to board directly from the deck and provide comfortable seating. On-board, a microphone and speakers assist our guides in sharing their expert commentary, a canopy overhead protects from the sun, with a toilet for remote convenience.

Cruise	Departure Dates	Price per person
		Twin share
10 Night Coral Adventurer (CA)*	2024: April - September 2025: April - September	\$12,800 [^]
10 Night Coral Geographer (CG)*	2024: April - September 2025: April - September	\$12,800 [^]
10 Night Coral Discoverer (CD)*	2024: April - September 2025: April - September	\$11,850 [^]

Prices are per person, twin share. Single prices available on application. [^]From pricing for (CD) based on the lead in cabin Main Deck (Cat B) and (CA), (CD) Based on Coral Deck Stateroom. Pricing subject to change and availability at time of booking. Traditional Landowners Access Fees and entrance fees are included in fares at time of print. *Please check with our team for specific departure dates in 2024 & 2025. Cruises depart ex Broome and Darwin.

KIMBERLEY CRUISING

Eco Abrolhos Cruises

from \$13,999 per person, twin share



Experience the wilderness of the Kimberley region onboard Eco Abrolhos in the capable care of our knowledgeable and experienced crew.

We go further and see more.

Eco Abrolhos is a well-appointed 35m catamaran mini cruise ship that has emphasis on a casual and relaxed ambience that our guests quickly become accustomed to but is not without the luxury. The vessel is fully air-conditioned and has 17 privately ensuited cabins.

A maximum of 32 guests forms an intimate cruising experience with a variety of cabins to suit all budgets including solo travellers. There is a spacious comfortable lounge area, a well-equipped library and large dining area where you will experience the culinary delights from our fully qualified chef.

Or you may like to sit at the fully licenced saloon bar and converse with other guests about the magnificent sights that you have seen during the day with a selection of Western Australia wines.

Extending on from these areas is a spacious undercover back deck, ample seating on all decks and a massive undercover alfresco top deck area to enjoy sunset drinks with 360° views to take in the panorama of the Kimberley beauty.

The Eco Abrolhos has 4 custom built aluminium tender boats. These tenders are set up for shore excursions and are excellent for cruising up the rivers to see spectacular waterfalls, indigenous artworks and observing the amazing wildlife the Kimberley has to offer. Our experienced crew will ensure our guests have the Kimberley adventure trip of a lifetime and a memory to treasure.

Kimberley Adventure 13 Night Itinerary

[From Broome to Wyndham or Broome to Darwin and reverse](#)

This cruise shows you the best of the Kimberley region from the Horizontal Falls, Montgomery Reef, Mitchell River, Hunter River, Prince Regent River, King George River, Jar Island and much more. Visit indigenous art sites, spectacular waterfalls and take in the ever-changing scenery. Try your hand at catching dinner, trekking to a waterhole, spotting the amazing wildlife and enjoy the stunning contrasting sunsets. Optional extra – 45-minute scenic flight over Mitchell Falls and Horizontal Falls Fast Boat ride.

Cruise	Ports	Departure Dates	Lower Deck Single Bunk Cabin		Middle Deck King Single Bunk Cabin	Queen / Double Bed Stateroom	King Bed Deluxe Stateroom
			Twin	Single	Twin	Double	Double
13 Night Kimberley Adventure	Broome to Wyndham	2024: 09 May; 08 Jun; 09 Jul; 08 Aug	\$13,999	\$16,999	\$14,999	\$17,399	\$18,999
	Wyndham to Broome	2024: 24 May; 23 Jun; 24 Jul; 23 Aug					

Prices are per person, twin share, except above mentioned single occupancy (sole use). Traditional Landowners Access Fees will be an additional charge to the cruise. Limited availability remains for 2024.

True North

from \$17,995 per person, twin share



Choose True North or True North II

Embark on an unparalleled adventure on board the multi-awarded True North – an experience that redefines adventure. We feature unparalleled access to stunning coastal environments and an unequalled opportunity to truly experience the destination. We pioneered adventure-cruising along the majestic Kimberley coast more than 35 years ago – no one knows the Kimberley like we do.

Other destinations include the still-wild coast of Australia featuring the pristine beaches and islands of the intriguing Abrolhos Islands, Ningaloo Reef, fishing at the Montebello Islands and diving the stunning Rowley Shoals, over the top adventure from Darwin to Cairns, the breathtaking Raja Ampats; the whale sharks of Cenderawasih Bay; the Sepik River and the un-spoilt islands of Papua New Guinea; mysterious Bougainville Island; beautiful Sydney Harbour and a seafood safari featuring Kangaroo Island and the picturesque Eyre Peninsula.

True North and True North II are purpose built to access wilderness areas - bigger ships cannot go where we go. Multiple adventure boats take guests away in small groups to experience wilderness up-close and the luxury of numerous adventure boats also means that guests have greater opportunity to do 'what they want, when they want' and, to add another dimension to adventure, most itineraries feature an on-board helicopter.

Daily activities can include snorkelling, diving, fishing, hiking, picnics, natural history, culture and scenic helicopter flights. True North and True North II feature the ultimate in comfort and style. Spacious cabins offer modern decor, en-suites, WIFI and in-cabin entertainment. Guest numbers are limited (36 guests and 22 crew on True North and 20 guests and 15 crew on True North II). The crew chaperrone every experience. We also enjoy a revered reputation for on-board dining.

Cruise	Ports	Departure Dates	Ocean Class	Ocean Premium	River Class	Explor Class
			2024	2024	2024	2024
7 Nights Kimberley Snapshot (True North)	Broome to Wyndham	2024: 4, 25 May; 15 Jun; 6, 27 Jul; 17 Aug	\$18,595	\$21,495	\$23,995	\$25,995
	Wyndham to Broome	2024: 30 Mar	\$22,995	\$25,495	\$27,995	\$30,595
10 Nights Kimberley Waterfalls (True North II)	Broome to Wyndham	2024: 16 Mar; 6 Apr	\$17,995	-	\$20,995	\$22,995
	Wyndham to Broome	2024: 26 Mar; 16 Apr				
10 Nights Kimberley Explorer (True North II)	Broome to Wyndham	2024: 22 Jun; 13 Jul; 3 Aug	\$17,995	-	\$20,995	\$22,995
	Wyndham to Broome	2024: 2, 23 Jul, 13 Aug				
13 Nights Kimberley Ultimate (True North)	Wyndham to Broome	2024: 20 Apr; 11 May; 1, 22 Jun; 13 Jul; 3 Aug	\$26,995	\$30,595	\$34,595	\$38,995
13 Nights Kimberley Ultimate (True North II)	Wyndham to Broome	2024: 11 May; 8 Jun	\$20,995	-	\$26,595	\$29,595
	Broome to Wyndham^	2024: 27 Apr; 25 May				

Prices are per person, twin share. Sole occupancy rates available on request. Limited availability for 2024. Traditional Landowners Visitor Passes will be an additional charge to the cruise.

KIMBERLEY CRUISING

Kimberley Quest

from \$4,990 per person, twin share



Kimberley Quest is a multi-award-winning, luxury Kimberley cruise company operating extended wilderness expeditions along the stunning Kimberley coast.

The *Kimberley Quest II* is a 25 metre vessel that has been designed for relaxing and exploring the Kimberley coastline, its custom design allows us to visit areas many other Kimberley cruises simply cannot reach. Whilst on board guests can enjoy indoor and outdoor areas, a refreshing dip in the spa and gourmet cuisine prepared by the on board chef. Cruising with a maximum of 18 guests the personalised service and attention to every detail means you will enjoy the amazing surrounds in complete comfort and luxury.

What's included The range of Kimberley cruises feature daily adventures that include a myriad of activities with our resident Expedition Guides. Leaving the mother-ship in either our comfortable shaded Jetboat, Quest Express, or one of our custom made tenders, you will set out exploring the untouched river systems, viewing ancient Aboriginal rock art, fishing the tidal reaches, visiting waterfalls and gorges, taking refreshing dips in secluded waterholes and much more. Cruises include all excursions, gourmet cuisine prepared by the on board chef and transfers. If you are cruising on the 7 Night Southern or Northern Quests, a spectacular helicopter flight over the Mitchell Falls and a scenic transfer flight are included. All other scenic helicopter options are additional.

Cruise	Ports	Departure Dates	Double Cabin		Superior Cabin		Flybridge	
			2024	2025	2024	2025	2024	2025
21 Day Beyond Adventure	Broome - Wyndham	2024: 20 Feb 2025: 18 Feb	\$19,990	\$20,990	\$23,490	\$24,490	\$25,140	\$26,140
14 Day Ultimate Quest	Wyndham - Broome	2024: 12 Mar; 9 Apr; 21 May 2025: 11 Mar, 8 Apr	\$21,790	\$22,790	\$24,990	\$25,990	\$26,490	\$27,490
	Broome - Wyndham	2024: 26 Mar; 23 Apr 2025: 25 Mar; 22 Apr						
10 Day Adventure Quest	Broome - Cygnet Bay	2024: 27 Aug 2025: 10 Sep	\$12,900	\$13,900	\$13,900	\$14,900	\$15,900	\$16,900
	Cygnet Bay - Cygnet Bay	2024: 5, 14, 24 Sep 2025: 19, 29 Sep						
8 Day Northern Quest	Wyndham - Mitchell River	2024: 7 May 2025: 5, 19 May	\$13,990	\$14,990	\$15,990	\$16,990	\$17,490	\$18,490
	Mitchell River - Wyndham	2024: 14 May 2025: 12 May						
8 Day Southern Quest	Broome - Hunter River	2024: 4, 18 Jun; 2, 16, 30 Jul, 13 Aug 2025: 3, 17 Jun; 1, 15, 29 Jul, 12, 26 Aug	\$13,990	\$14,990	\$15,990	\$16,990	\$17,490	\$18,490
	Hunter River - Broome	2024: 11, 25 Jun; 9, 23 Jul; 6, 20 Aug 2025: 26 May; 10, 24 Jun; 8, 22 Jul, 5 Aug, 2 Sep						
4 Day Taste of the Kimberley	Cygnet Bay - Cygnet Bay	2024: 3, 6, 21, 24 Oct 2025: 8, 11, 14 Oct	\$4,990	\$5,490	\$5,990	\$6,490	\$6,490	\$6,990

Prices are per person, twin share. Sole occupancy rates available on request. Traditional Landowners Access Fees will be an additional charge to the cruise. Excludes visitor pass fees.

Kimberley Pearl

from \$8,400 per person, twin share



A truly unique experience exploring the remote Kimberley coastline.

Kimberley Pearl Charters offer intimate, adventure style cruises aboard a beautifully restored and refurbished pearling vessel, formerly of the famed Paspaley Pearling fleet. The Kimberley Pearl offers six ensuite cabins and accommodates a maximum of twelve guests.

With three tenders, we promise to deliver a diverse touring experience which focuses on daily activities and creating life-long memories. Join us for a set itinerary, or charter the vessel exclusively with a group of friends or family.

Departing from Cygnet Bay or Wyndham, including transfers to/from the vessel, all meals prepared by our on board chef, soft drinks, tea and coffee, experienced crew, all daily activities and more.

Cruise	Ports	Departure Dates	Price per person
			2024 / 2025
7 Night Kimberley Snapshot Cruise	(Broome) Cygnet Bay to Cygnet Bay (Broome)	2024: 28 Aug, 7, 16, 25 Sep, 05, 14, 23 Oct 2025: 22 Feb, 2, 11, 19 Mar, 3, 12, 20, 28 Sep, 6, 15, 23 Oct	\$8,400
13 Night Ultimate Kimberley Cruise	(Broome) Cygnet Bay to Wyndham (Kununurra)	2024: 15 Apr, 15 May, 14 Jun 2025: 28 Mar, 26 April, 25 May, 23 Jun	\$15,600
	Wyndham (Kununurra) to (Broome) Cygnet Bay	2024: 31 Mar, 30 May, 29 Jun 2025: 12 April, 11 May, 9 Jun, 8 Jul	
10 Night Kimberley Pearler Cruise	(Broome) Cygnet Bay to Swift Bay/Kununurra	2024: 14 Jul, 6 Aug 2025: 13 Aug	\$12,000
	Swift Bay/Kununurra to (Broome) Cygnet Bay	2024: 24 Jul, 16 Aug 2025: 1, 23 Aug	\$12,000

Prices are per person, twin share. Sole occupancy rates available on request. Traditional Landowners Access Fees will be an additional charge to the cruise. Limited availability remains.

Eclipse Expeditions

from \$11,200 per person, twin share



The Art of Discovery with uniquely personalised adventures.

Eclipse is a luxury sailing charter operator offering environmentally conscious expedition cruising and unparalleled freedom of adventure for groups of up to 8 guests. We are the first of WA's coastal explorer cruises to offer sail-based cruising with a brand-new Leopard 50 performance sailing catamaran. With four elegantly appointed ensuite staterooms, various open entertainment areas, and complete with two custom built expedition tenders, Eclipse is a modern explorer's utopia that brings you closer to nature.

Experiences offered daily include beach combing, wildlife encounters, fishing, hiking, snorkeling, cultural and historical outing all with unparalleled onboard luxury. Outside its Kimberley cruising season, Eclipse can take you to explore the untouched magic of the Montebello Islands and the awarded Southwest wine Region in WA.

Cruise	Ports	Departure Dates	Price per person
			Twin share
7 Night Kimberley Island Explorer	(Broome) Cygnet Bay to Cygnet Bay (Broome)	2024: 15, 23 Apr; 16, 23 May; 16, 23 Jun; 16, 23 Jul; 16, 23 Aug; 16, 23 Sep; 16, 23 Oct	\$11,200
7 Night Iconic Kimberley Expedition	(Broome) Cygnet Bay to Broome	2024: 01, 08 May; 01, 08 Jun; 01, 08 Aug; 01, 08 Sep; 01, 08 Oct	\$12,250

Prices are per person, twin share. Traditional Landowners Access Fees will be an additional charge to the cruise. Private Charter rates are available on request.

Inclusions:

- Selection of premium WA wines, spirits, beer, cocktails and other beverages.
- Broome vessel departure point with road, light aircraft and helicopter transfers.
- Airport and accommodation transfers on the first and last day.
- Off vessel expeditions including necessary equipment.
- All meals, tea and coffee.
- Laundry
- National Park fees and port charges.
- Limited Wi-Fi for communications with shore.

KIMBERLEY CRUISING

PONANT

from \$12,810 per person, twin share



Discover The Kimberley's ancient landscapes on a modern small ship expedition - now with flights included.

PONANT will again bring two luxurious, state of the art, and perfectly sized expedition yachts to The Kimberley in 2024. Whether you choose an expedition on Le Laperouse or Le Jacques Cartier, you will experience the very best in laid back luxury that is the hallmark of PONANT - The world leader of Luxury Expeditions for over 30 years.

The Kimberley, one of the world's last great wilderness frontiers is best experienced on a luxury small expedition ship. Explore one of the oldest and most fascinating regions in the world aboard a Ponant Explorer vessel, the most environmentally sustainable ship in the Kimberley.

In a Zodiac, accompanied by an experienced Expedition Team, navigate through mangroves, home to saltwater crocodiles, venture beneath towering waterfalls, marvel at extraordinary tidal movements and see ancient Aboriginal Gwion Gwion rock art galleries. You may even get the chance to witness migrating humpback whales.

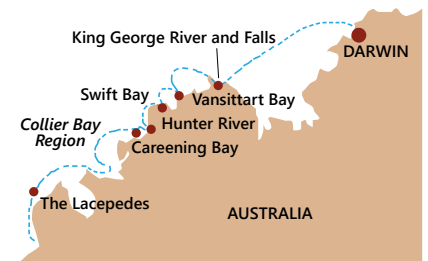
Back on board your luxurious floating base camp, enjoy PONANT's signature French luxury and relaxed atmosphere, cool off in the pool, and with an Open Bar, relax with a champagne admiring the stunning sunsets before enjoying fine cuisine on deck or in the dining room.

What's Included:

Return Airfares, Taxes and Transfers, Maximum of 92 Staterooms all with balconies. Zodiac and shore excursions with Naturalist Team, onboard entertainment, spa, fitness centre, theatre, lounges, pool and outdoor bar, all meals and open bar, 24 hour room service, stocked mini bar in room, access to Blue Eye Lounge, complimentary Wi-Fi.

10 Night Itinerary *Iconic Kimberley - Darwin to Broome or vice versa*

Embark aboard *Le Lapérouse* or *Le Soléal* for an 11-day expedition cruise along the Kimberley Coast between Darwin and Broome. The Kimberley region is one of the last unspoiled regions on the planet. In one of the most picturesque parts of the region, the Hunter River, you will see wild mangrove forests where saltwater crocodiles live along with many species of birds. The highpoint of this cruise will be the King George River and the majestic Twin Falls, the highest falls in Western Australia. You will also visit Collier Bay, where you will be able to admire the Montgomery Reef, home to vast expanses of lagoons and immense coral reefs.



Cruise	Ports	Departure Dates	From price per person
10 Night Iconic Kimberley	Broome to Darwin	2024: (LP) 14 Apr; 21 Sep (LC) 01 Jun; 11, 31 Jul; 09; 20* Aug; 29 Sep	\$13,620
	Darwin to Broome	2024: (LP) 24 Apr; 14 May; 03, 23 Jun; 13 Jul; 02, 22 Aug; 11 Sep (LC) 22 May; 11 Jun; 01, 21 Jul; 10, 30 Aug;# 19 Sep	\$12,810

Save up to 25% if you book early and additional \$800 per stateroom on your first voyage. Conditions apply and subject to change and availability. Prices are per person ,twin share based on door to door. Sole occupancy rates available on request. Fares and availability correct at time of pricing. ^Rates are dynamic and subject to change and availability *Pricing based on Deluxe Stateroom Deck 3 20 Aug (LC), #Pricing based on Deluxe Stateroom Deck 3 19 Sep (LC). LP = Le Laperouse LC = Le Jacques Cartier

Silversea

from \$13,450 per person, twin share



Discover the timeless Kimberley Coast

There is no place on Earth like the Kimberley coast, it tops travel lists time and time again with good reason. The Kimberley is wild and remote with a storied history, and it is untouched by man other than the ancient Indigenous that you'll find scratched into the walls of the caves. Almost impenetrable, the landscape consists of sparkling horizontal waterfalls, gorges, canyons, ridges, ancient mangrove forests and cliffs. No two journeys here are the same, you might see a humpback whale or a saltwater crocodile while exploring the waters, but you won't spot any humans. The size of France and nestled at the north of the Western Territory this is a destination for those who love to explore. Join us on a journey to the place that time forgot but that you'll remember forever.

Embarking from either Broome or Darwin, experience the best of the Kimberley coast including the astonishing Horizontal Falls and incredible Montgomery Reef, the world's largest inshore reef which rises out of the water as the tide ebbs away. From untouched beaches that stretch as far as the eye can see, to incredible rock formations, you'll encounter wildlife and landscapes that are both unforgiving and unforgettable.

Accommodation

Silver Cloud accommodates 240 guests in all-inclusive intimate style and offers a degree of luxury unmatched in expedition cruising. All suites are ocean-view and feature butler service, complimentary beverages, refrigerator and bar set up stocked with your preferences, European bath amenities, flat screen TV, music and satellite news.

What's Included

This is expedition travel at its best, from Zodiac® tours to dining and butler service in every suite category, the all-inclusive cruise provides the perfect combination of adventure and comfort.

With Silversea you get utmost peace of mind so you can focus on what's important: exploring that magic of your destination to the fullest. Enjoy sophisticated, spacious all-suite accommodations with butler service, complimentary champagne, spirits, beers and fine wines, world-class cuisine. Complimentary Wi-Fi throughout the ship and gratuities are also included.

10 Night Itinerary - [Darwin to Broome or vice versa](#)

Unlock the highlights of the Kimberley Coast on a 10-day luxury voyage. Leaving from either Darwin or Broome, enjoy this comprehensive itinerary that immerses you in the best of the Kimberley coast, including Montgomery Reef, the world's largest inshore reef, and the astonishing Horizontal Falls. From incredible rock formations to untouched beaches that stretch as far as the eye can see, you'll encounter landscapes and wildlife you've never seen before, not even in your wildest imagination. Witness the natural beauty of Australia's Wyndham, the King George River, the Hunter River region, and the Buccaneer Archipelago region. As well as majestic sunsets and captivating wildlife, guests will discover the impressive Bungle Bungle Range and the iconic Wandjina rock paintings, which are said to date back approximately 4,000 years.

Cruise	Ports	Departure Dates	Vista Suite	Veranda Suite	Deluxe Veranda Suite	Medallion Suite
10 Nights Silversea	Darwin to Broome	2024: 9, 29 Jun, 19 Jul	\$13,450	\$14,950	\$16,950	Enquire
	Broome to Darwin	2024: 19 Jun, 9 Jul	Enquire	Enquire	Enquire	Enquire

Prices are per person, twin share and 'from' based on the 29 June 2024 Darwin to Broome departure. Pricing is on application for all other dates. Sole occupancy rates available on request. Fares and availability correct at time of pricing. Rates are dynamic and subject to change and availability. Please contact us for the latest Silversea special offers.

THE KIMBERLEY

The Kimberley Map

TRAVEL TIP

Time your visit to Broome around the unique experience of 'staircase to the moon', a natural phenomenon which occurs when a full moon rises over the exposed tidal flats of Roebuck Bay. The Staircase to the Moon happens 2 - 3 days a month between March and October.



PURNULULU NATIONAL PARK

An incredible World Heritage Site in the East Kimberley region of Western Australia, this 239,723-hectare national park is located approximately 300 kilometres south of Kununurra, with Halls Creek located to the south.

The Bungle Bungle Range (in Purnululu National Park) is one of the most striking geological landmarks in Western Australia, offering a remote wilderness experience.



KUNUNURRA & EAST KIMBERLEY

At the heart of the stunning East Kimberley, Kununurra is an excellent base to explore the region. See the mighty Ord River and view the prolific bird life, wildlife and ancient gorges, or marvel at the splendour of Lake Argyle, Australia's largest freshwater lake. Kununurra is also the eastern gateway to the Gibb River Road, a 'must do' on any Kimberley itinerary.



GIBB RIVER ROAD

A journey along the Gibb River Road 4WD route is one of the last true outback adventures. Originally constructed in the 1960s to transport stock from surrounding cattle stations, it stretches some 700km from King Sound in Derby to Kununurra.

The Gibb River Road is only accessible by 4WD and takes you through spectacular scenery, passing many gorges, waterfalls and rivers. So take time to explore, find time for hiking and taking a refreshing swim in pools beneath plunging waterfalls.

Discover Broome, gateway to the Kimberley

BROOME

Once the pearling capital of the world, Broome is a unique town with an intriguing history.

Surrounded by the sparkling turquoise waters of Cable Beach with red cliffs and endless white sand, Broome's stunning natural beauty and relaxed tropical feel will captivate you from the moment you arrive.

Established as a pearling port in the 1880's, Broome today boasts a multicultural population made up of the many nationalities who flocked to the shores of Roebuck Bay in the hope of making their fortune from the pearling industry. Attracting workers from Indonesia, Malaysia, China, Japan and Europe, these influences are all here today, along with strong First Nations cultures giving Broome a vibe unlike anywhere else.

While in Broome, visitors are invited to sample craft beers at laid-back breweries, search for dinosaur footprints at Gantheaume Point, explore an operating pearl farm at Cygnet Bay, take a sunset sail or opt for an iconic Broome experience, an unhurried camel ride along Cable Beach.

Start planning your Broome getaway today.



WEATHER

The Kimberley Region enjoys dry, sunny days during May to October and averages 31°C during the day and a minimum of 16°C at night. November to April is the Wet Season and usually offers humid days and balmy nights. Rain is normally short however access to remote locations can be limited due to seasonal flooding and reduced road access.

DAMPIER PENINSULA

The Dampier Peninsula north of Broome is made up of a string of beautiful beaches bound by crystal clear waters. The unspoilt coastline is the perfect place to swim, snorkel and enjoy some great fishing. Home to a number of Aboriginal communities who have embraced tourism, visitors to the Dampier Peninsula can share in the lifestyle of the Aboriginal people and learn about their traditional fishing and hunting techniques.



BROOME ACCOMMODATION

Bayside Holiday Apartments

Cnr Hamersley and Anne Streets

From \$175 per room, per night

Bayside Holiday Apartments is a three star property offering great value accommodation in One or Two Bedroom fully self-contained apartments. Located only a short walk from the centre of Broome and Chinatown, Bayside enjoys views across glorious Roebuck Bay.

Property Features

With only 12 apartments, Bayside is ideal for guests wanting a quiet and relaxing base while travelling on a budget. The pool is set in tranquil garden surrounds, there is secure off street parking, complimentary BBQs and a guest laundry. Matsos's Broome Brewery across the road is the in house restaurant and offers charge back facilities. Guests are also welcome to use the facilities at Moonlight Bay Suites.

Accommodation

Comfortable Apartments offering 1 or 2 bedrooms, separate living room and a bathroom. Excellent value for money. All rooms are on ground level and are ideal for family holiday accommodation.



Moonlight Bay Suites

51 Carnarvon Street, Broome

From \$230 per room, per night

Located just a 10 minute walk from the centre of Chinatown, Moonlight Bay Suites provides spectacular uninterrupted views of Roebuck Bay and is the perfect place to watch the magnificent "Staircase to the Moon"

Property Features

Moonlight Bay Suites boasts a huge 28 metre pool and spa with poolside BBQ area overlooking Roebuck Bay. The property also has an onsite gymnasium. Matso's Broome Brewery is located across the road and is Moonlight Bay's in house restaurant. Enjoy cuisine reflecting the unique tropical flavours of Broome and sample a selection of local beers. Charge back facilities are available for in house guests.

Accommodation

One and two bedroom spacious suites with a full range of facilities including a well equipped kitchen with full size fridge, stove top, oven and microwave and living/dining area with Foxtel TV with movie channels. Pool View Suites overlook the pool with views towards Roebuck Bay.



The Continental Hotel Broome

Weld Street, Broome

From \$174 per room, per night

Conveniently located near beautiful Roebuck Bay, in the heart of Town Beach the Conti is your idea escape. Just a stone's throw away from the best attractions in the West Kimberley.

Property Features

A vibrant, tropical oasis set amongst tranquil grounds with manicured gardens, alfresco dining, state of the art gym, two pools and one of Broome's most popular restaurants – Papa Fuego.

Accommodation

Offering a relaxing retreat experience with a varied selection of room types and modern amenities.



Mangrove Hotel Broome

47 Carnarvon Street, Broome

From \$239 per room, per night

The iconic Mangrove Hotel is a bayside escape of unparalleled style and service. Located on Roebuck Bay, it boasts the most impressive sea views in Broome. Dive into the tranquillity of the tropical pools and unwind in cabanas amongst the swaying palm trees. The property is a short stroll to Broome's famed tourist attractions. Browse through Chinatown, explore geological sites and relax on the world-class Cable Beach.

Property Features

Tranquillity will surround you at the hotel's two pools and private cabanas and loungers. The resort has a modern in-house gym and two onsite restaurants including the famous Johnny Sausage. The hotel is in the ideal location for the best view for the Staircase to the Moon phenomenon. Experience the region's imposing fiery red cliffs, unearth genuine dinosaur footprints, reel in a Spanish mackerel off the coast and find a stretch of pristine beach all to yourself.

Accommodation

The guest rooms have been styled with you in mind offering maximum comfort and convenience. Choose your escape zone and be surrounded by lush tropical gardens, poolside escapes or stunning bayside vistas. With so much to see and experience in Broome, it won't be easy saying goodbye.



Oaks Broome Hotel

99 Robinson Street, Broome

From \$211 per room, per night

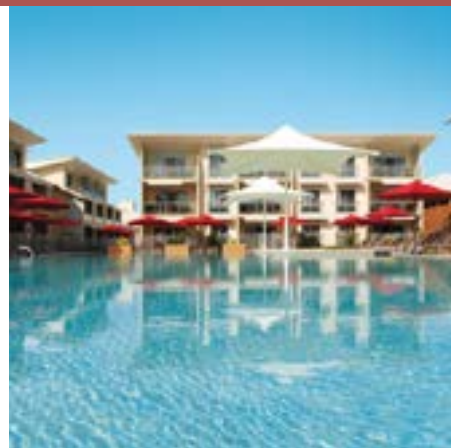
Located in Town Beach on the beautiful Roebuck Bay, Oaks Broome Hotel provides the perfect launching point from which to explore a variety of natural treasures, alluring landscapes and adventure pursuits.

Property Features

The hotel features well-furnished hotel rooms, studios and one and two bedroom apartments, two sparkling swimming pools and an on-site pool-side restaurant and bar open daily for breakfast and dinner as well as the convenience of elevators and laundromat on-site.

Accommodation

The hotel rooms and apartments are comfortable and well-appointed featuring balconies and large decks overlooking the swimming pools. Apartments also contain kitchenette as well as corner bath with jets.



Oaks Cable Beach Resort

11 Oryx Road, Cable Beach

From \$234 per room, per night

Ideally located just a short walk to the golden sands of Cable Beach and a 10 minute drive from Broome's town centre, Chinatown and Roebuck Bay. Oaks Cable Beach Resort is the ideal place for couples and families to stay.

Property Features

The resort features exceptional resort facilities including a lagoon swimming pool with a surrounding deck and sun lounges, an infinity pool as well as a dedicated children's wading pool, an on-site restaurant open daily for breakfast and dinner and BBQ areas.

Accommodation

The resort offers a choice of ground floor studio rooms, as well as fully self-contained 1 or 2 bedroom apartments and 3 bedroom villas.



Seashells Broome



4-6 Challenor Drive, Cable Beach

From \$260 per room, per night

Seashells Broome has been specifically designed to allow families and couples alike to indulge in the peace and tranquillity of this tropical paradise. Stylish, fully self-contained apartments and bungalows are nestled amongst lush and secluded gardens. The property is located just 300 metres from Cable Beach.

Property Features

Relax in our tropical gardens with paved walkways or by the large outdoor temperature controlled island swimming pool, children's paddling pool and playground, barbecues, entertaining area, small shop, tour desk and free car parking.

Accommodation

Choose from one bedroom apartments with jetted baths, two bedroom apartments, or three bedroom/two bathroom family bungalows. Stylishly decorated with quality imported furnishings, tiled floors and timber balconies or verandahs, you'll find every need is catered for.

Each feature well-appointed kitchens and laundries, spacious lounge and dining areas, plus air conditioning and ceiling fans, free in-house movies and Wi-Fi internet, Foxtel, DVD players on request, tea and coffee making facilities and a weekly housekeeping service (daily by request).

From the simple yet unforgettable experience of sunset watching at Cable Beach on warm tropical nights to sunset cruises, scenic flights and camel rides, our idyllic yet convenient location lies just minutes away from Broome town centre and a smorgasbord of activities and attractions.

BROOME ACCOMMODATION

Discovery Parks Broome

Walcott Street, Broome

From \$280 per room, per night

Discovery Parks – Broome is known for uninterrupted views of the beautiful Roebuck Bay on WA's Dampier Peninsula Coast and just minutes from Cable Beach. Witness the phenomenon "Staircase to the Moon" on your front step in Western Australia's spectacular getaway and final frontier of Broome.

Property Features

With direct beach access including a boat ramp, camp kitchen, kiosk/store, guest laundry facilities, a playground, swimming pool, and Wi-Fi, this property offers everything guests need for a memorable and relaxing stay.

Accommodation

The newly installed deluxe cabins come with their own decking, fully equipped kitchen and modern bathroom, as well as reverse-cycle air conditioning. Each has a car park space alongside, meaning guests can start enjoying their Broome stay immediately, and a brand-new reception with kiosk, check-in and tour desk means a comfortable and warm welcome is guaranteed.



The Pearle of Cable Beach

14 Millington Road, Cable Beach

From \$299 per room, per night

Just a short stroll from Cable Beach, the fabulous Pearle of Cable Beach Resort features 35 fully serviced guest rooms and 35 architecturally designed Pool Villas. The fully self-contained villas feature their very own private swimming pool, private sun decks and outdoor dining areas - your own, private luxury Broome home.

Property Features

Early/late check out lounge and bathroom, resort shop, free Wi-Fi internet, guest laundry and a tour desk.

Accommodation

The 1, 2 or 3 bedroom Pool Villas feature your own private 8m long plunge pool with sun lounges and timber decks. They also feature a private outdoor entertaining area complete with BBQ and alfresco dining balcony. The Pool Villas have fully self-contained kitchens.



Eco Beach Resort

Eco Beach, off North West Coastal Highway

From \$267 per room, per night

One of the world's most remarkable destinations, Eco Beach Resort is a multi-award-winning eco resort set in a pristine and untouched landscape just over an hour's drive south of Broome. Find yourself in nature's blue backyard at Eco Beach, offering a perfect parallel of Kimberley beach and bush, with the comfort and facilities of a resort.

Property Features and Experiences

At the centrepiece of the property lies Jack's Bar, a spectacular oceanfront bar and restaurant with an infinity pool. Enjoy gourmet cuisine prepared with local seasonal produce and fresh seafood accompanied with an extensive wine and cocktail list. The beach offers a haven for nesting turtles whilst migrating whales frolic offshore (seasonal). Activities include kayaking, yoga, bush walks, Indigenous tours and Jack's Creek fishing options. Massages are available onsite from the Dragonfly Day Spa or simply relax in one of the beach hammocks. Day visitors are welcome.

Accommodation

The luxury Eco Villas feature air-conditioning, ceiling fans, separate bedroom and ensuite, open plan living area, kitchenette with small fridge and microwave. The spectacular oceanfront Beach Houses offer two bedroom two bathroom fully self-contained accommodation. The spacious safari-style Eco Tents have an ensuite, fly screen ventilation, fan and a private deck. Self-catering options are available with the use of the communal kitchen and BBQ facilities.



Cable Beach Club Resort and Spa



1 Cable Beach Road, Cable Beach

From \$349 per room, per night

The award winning Cable Beach Club Resort and Spa is the only resort overlooking Broome's iconic Cable Beach. Here the red pindan landscape, white sands and clear blue waters combine to form one of Australia's most spectacular landscapes. The Resort offers 221 rooms styled to reflect the Asian-influenced, pearling history which shaped the identity of Broome. The diverse choice of accommodation offered is complemented by acres of tropical gardens hosting artefacts from around the world. Indulge in an exclusive romantic retreat or the ultimate family holiday.

Property Features

Guests will relax into Broome-time and immerse themselves in the full resort experience. Delight the senses with a choice of four restaurants reflecting the influences of the region or rejuvenate mind body and soul at Chahoya Spa by L'Occitane and Salon. For the little ones, hours of fun can be spent enjoying the Family Pool, gym, tennis courts or playing mini golf, or if you are feeling adventurous, visit our tour desk and resort shop!

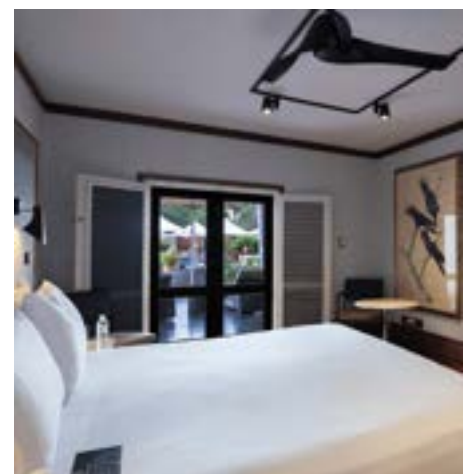
Accommodation

Our expansive tropical haven enables privacy and offers a place to reconnect with loved ones. Couples will enjoy our range of Studios, featuring corrugated iron walls, polished floorboards and private verandah or our secluded Villas boasting a courtyard and private plunge pool. Families and groups can stretch out in our Club Apartments or Bungalow accommodation styled to reflect the old Pearling Masters quarters. These are a home-away-from-home and offer open-plan dining, living and kitchen areas with up to three bedrooms. The Resort's masterpieces lie in the design of three decadent suites. Named after renowned artists they feature private art collections complemented by exotic antiques and unparalleled views of the Indian Ocean. Make lasting memories, the Cable Beach Club way.

Various room types available including:

- Garden View Studio from \$349 per room, per night
- Classic Bungalow from \$549 per room, per night
- Pearler's Bungalow from \$599 per room, per night
- Club Apartments from \$749 per room, per night

(Suites and Villas pricing available on request)



BROOME TOURS

Camel Safaris



Broome Camel Safaris

Operates: Mon – Sat
Tour times vary due to tides/sunsets
Duration: varied

PM	Sunset	Adult	Child (5-15yrs)
\$65	\$115		
\$55	\$85		

Meet Alison Bird, Broome's most experienced camel operator and a true 'Camel Lady'!

Experience a gorgeous stroll along the iconic Cable Beach at either pre-sunset or sunset.

**Please note a 90 kilogram weight restriction applies.*

Wilderness Safari



Broome Aviation

Operates: Daily from Apr-Sep
Duration: Full day
Adult: \$1,999

Depart Broome and track over Chinatown, Wuaammin Conservation Park, Fitzroy River and Napier Range. Land at Mount Hart, an ex-cattle station. Take a helicopter to soar over Twin Flames and Isdell River. Hop on a 4WD to Matthew Gorge, hike to a natural spa and hear dreamtime stories at Sunset Hill. Fly over Horizontal Falls, witness rapid tidal movements and marvel at Buccaneer Archipelagos' islands. Return to Broome via the coast flying over Pender Bay, Beagle Bay, Carnot Bay, James Price Point, Willie Creek and Cable Beach.

Broome Panoramic Town Tour



Broome and Around

Operates: Daily
Departs: 9.00am-11.30am
Duration: 2.5hrs
Adult: \$110
Child: \$40 (5-15yrs)

Join our local professional guides and enjoy the best of Broome. Broome's unique and diverse history and sights all included! Starting at famous Cable Beach and learning about Lord McAlpine's epic Broome history, off to explore Gantheaume Point and the dinosaur foot prints, Entrance Point and the iconic world-renowned heritage site, the Japanese Cemetery, Town Beach, Chinatown and we'll visit some secret vantage points to enjoy the boundless colours and beauty of Broome. Hear about our extraordinary pearling history, World War II Catalina's, and so much more of the history and beauty of the Broome that it is today.

3 in 1 Iconic Tour



Broome and Around

Operates: Daily 12.45pm-4.45pm
Duration: 4hrs
Adult \$130
Child \$70 (5-15yrs)

Fun and adventure amongst these iconic Broome locations. Join our professional and local guides on a fun and adventure afternoon. Three "iconic-Broome" locations in one unforgettable leisurely afternoon of Broome Time! Suitable for Solo, Couples, Family's and Groups. Visit Broome's fascinating past including browsing our dinosaur, pearling, wartime history and so much more. Then taste our iconic Ginger and Mango famous beers, then head off to the famous Malcolm Douglas Crocodile Park with over 2500 crocodiles. A Broome must do! An incredible legacy from the famous Malcolm Douglas to experience these prehistoric dinosaurs!

Flavours of Broome - Iconic Food and Drink Bus Tour



Broome and Around

Operates: Tuesdays & Thursdays
Duration: 4hrs
Adult: \$150
Child \$50 (5-15yrs)

We provide transport while you spend the afternoon savouring the flavours of local brews and fresh produce at the most iconic venues in Broome. Our locally guided Broome restaurant-hopping tour includes; share plates, beer paddles, White Pearl Gin and tonics, and oysters to sample during your Oyster Masterclass! Bubbles and pearl appreciation at Willie Creek Pearl Showroom. You'll meet our local brewers and distillers and learn about their Broome-inspired food and drinks! While also discovering the best of Broome award-winning restaurants, you'll be in pole position for sunset cocktails overlooking our famous Cable Beach. Now that's living the dream.

Malcolm Douglas Crocodile Park



Broome and Around

Operates: Daily, 2.15pm-4.45pm
Duration: 2.5hrs
Adult: \$80
Child \$35 (5-15yrs)

We'll head to the new Malcolm Douglas Park about 20 mins out of town for the famous Malcolm Douglas Crocodile Park Tour. There's over 2500 crocodiles - a Broome must do! A park with incredible legacy from the famous Malcolm Douglas to experience these prehistoric dinosaurs! We'll get up close and personal holding a baby crocodile before the tour starts. We'll check out Australia's largest Crocodiles on display in Australia and experience the differences between the Estuarine (Salty) crocodiles, Freshwater (Johnsons) Crocodiles and the biggest display of American Alligators in Australia! We'll share Malcolm's incredible background and some Broome commentary on the way to the Park.

Broome Sights



Australian Pinnacle Tours

Operates: Mon – Sat (Apr to Oct)

Duration: 6hrs

Adult: \$99

Child: \$59 (4-12yrs)

Take in all the highlights of Broome and sunset on famous Cable Beach.

Beginning in Chinatown, visit a pearl shop and Sun Pictures before heading past Old Broome to view Pearling Masters homes, Town Beach, Matso's Broome Brewery (tasting included) and onto the Japanese Cemetery. Visit the Port and Gantheaume Point, known for dinosaur footprints before ending at Cable Beach. Ask about adding an optional Champagne at sunset with nibbles!

Dampier Peninsula Aboriginal Communities Tour



Australian Pinnacle Tours

Operates: Mon, Wed, Fr (Apr to Sep)

Duration: Full day

Adult: \$289 - coach only

Child: \$189 (4-12 yrs)

A well renowned pearl farm situated at the tip of the Dampier Peninsula, whilst here take a tour of the farm, learn about the history of the pearling industry and enjoy a chef prepared lunch.

This iconic landmark is the northernmost tip of the Dampier Peninsula in the Kimberley region and is approximately 240km north of Broome. The wide stretches of sandy beaches are known to be the nesting place for wild turtles and a number of sea birds.

*When available, an additional visit to the aboriginal community at Lombadina will be included before lunch. This is dependent on the discretion of the community patrons

Broome Sunset Dinner Cruise



Archipelago Adventures

Operates: Tues, Thurs, Fri and Sat (Mar - Nov)

Duration: 4hrs

Adult: \$195

Whether you're celebrating a special event, organising a group night out, or just looking for a dinner with a difference, this dinner cruise is for you. Step aboard their tri-level catamaran, find a comfortable spot and watch the sunset from the best possible vantage point. Get views of the Broome coastline, enjoy the scenery, snap photos and watch the sun sink toward the watery horizon.

Whale Watching Tour



Absolute Ocean Charters

Operates: Daily (late Jun to late Sep)

Times: 9am, 1pm and 3pm

Duration: 3hrs

Adult: \$149

Child: \$95 (5-14 yrs)

Enjoy an awe inspiring afternoon viewing the majestic Humpback whales as they migrate their way along the Kimberley coast.

Relax in comfort on one of the daybeds while our Marine Biologist keeps you informed and up to date with all the fascinating facts. Listen to whale song through our on board hydrophone whilst enjoying appetizers and refreshing drinks. Children's activities and informative commentary is available on all tours. Refreshments and return transfers are included.

Snubfin Dolphin Eco Cruise



Absolute Ocean Charters

Operates: Daily at 9am & 3pm

Duration: 3hrs

Adult: \$125

Child: \$85 (5-14 yrs)

This cruise has it all - unique wildlife, coastal scenery, history and a stunning sunset^.

Soak up the scenery in comfort as you cruise Roebuck Bay learning about the biodiversity of flora and fauna. Spot snubfin dolphins, turtles, sea snakes and dugongs! The qualified Marine Biologist will be your host on board, providing informative commentary.

Discover historical sites and landmarks of Broome then top it off with a beautiful sunset over the water (sunset only included with the 3pm departure). Refreshments and return transfers are included.

Full Day Fishing



Absolute Ocean Charters

Operates: Daily

Departs: 7:30am

Duration: 7hrs (full day) or 5hrs (half day)

Full Day: Adult \$389, Child \$359 (5-14 yrs)

Half Day: Adult \$329, Child \$299 (5-14 yrs)

Spectator/Shared line:

Adult \$149, Child \$99 (5-14 yrs)

Fish with the best in the North West and enjoy a beautiful day exploring the turquoise waters of Broome. Enjoy a full or half day fishing charter catching quality table fish for dinner, or earn bragging rights landing a great fighting sport fish!

Everything is provided including return transfers from your accommodation, all you have to do is remember to bring your camera! Amateurs, experts, families and children are welcome.

BROOME TOURS

Colours of Broome 30 min Helicopter Flight



KAS Helicopters

Operates: Daily
Duration: 1hr
Flight Time: 30 min

Adult: \$399 (Min 2 passengers)

This 30 minute scenic flight gives you a superb impression of the breathtaking colours of Broome from the air as you experience captivating views of the turquoise waters and white sands of world famous Cable Beach flying north towards Willie Creek.

Overflying the pearl farm, on the way back gain a unique aerial perspective of all 22 kilometres of Cable Beach, the Broome Peninsula, the stunning red cliffs at Gantheaume Point, Broome Jetty, Roebuck Bay and historical Chinatown, and keep an eye out for marine life including turtles, manta rays, sharks and even the occasional croc.

Eco Beach Explorer



KAS Helicopters

Operates: Daily
Duration: 3.5hrs including lunch
Adult: \$859

Marvel at the azure waters, red cliffs, muddy creeks and picturesque coastline as you head south from Broome to the award-winning Eco Beach Resort.

Upon arrival, sit back and take in the incredible views from the elevated Jacks restaurant as you enjoy an a-la-carte lunch (including a complimentary glass of wine, beer or soft drink). After lunch, you'll have plenty of time for a refreshing ocean swim or relaxing walk along the beach before returning to Broome with another stunning scenic flight.

Scenic and Prehistoric Tour



Broome Adventure Cruises

Operates: Daily
Departs: Times vary
Duration: 5hrs

Adult: \$196
Child: \$126

Visit Roebuck Bay, a heritage-listed marine park, and immerse yourself in the awe-inspiring Kimberley Coastline.

The purpose-built shallow landing vessel, Brahminy Kite is the perfect boat to explore this intriguing coastline. This tour includes a short beach walk to stand in the dinosaur footprints. Journey up Dampier Creek where you can get up close and personal with the flora and fauna and take in the spectacular surroundings of the white sands and many winding tributaries whilst enjoying refreshments and nibbles. See the contrasting blue waters, bright Pindan coloured cliffs and the many species of bird life and wildlife within the Bay.

Buccaneer Explorer



Air Kimberley

Operates: Daily*
Duration: Half day
Adult: \$800
Child: \$700 (3-12 yrs)

This tour encompasses the best of the West Kimberley coast including islands of the Buccaneer Archipelago. Fly over the Dampier Peninsula, King Sound, Horizontal Waterfalls, Cockatoo and Koolan Islands.

Explore Ardyaloon Community with a swim and refreshments, then visit the Ardyaloon Trochus Hatchery and Aquaculture Centre for a guided tour. Enjoy a fascinating tour of the Hatchery which contains a diverse range of fish, coral, and crustaceans whilst learning about the Bardi-Jawi people's strong connection to their saltwater traditions. Enjoy a coastal return flight along the bays and beaches of the Dampier Peninsula including Willie Creek Pearl Farm and Broome's world-famous Cable Beach. *Subject to min numbers.

Mitchell Falls Explorer



Air Kimberley

Operates: Tue, Thu, Sat & Sun*
Dry season: May-Sept
Wet season: Oct-Apr
Duration: Full day
Adult: \$2,050 Dry season
\$1,400 Wet season
Child: \$1,950 Dry season (3-12 yrs)
\$1,300 Wet season (3-12 yrs)

Visit an ancient frontier by flying to the remote and spectacular Mitchell River National Park. Enjoy a 4km walk travelling past majestic waterfalls, spell-binding gorges, Aboriginal rock art and sites of cultural significance. Admire the unforgettable view of Mitchell Falls, enjoy a gourmet picnic lunch and swim, jump on board your helicopter scenic flight over the falls and Mertens Gorge. Enjoy a stunning coastal flight back to Broome across the Buccaneer Archipelago and Dampier Peninsula. *Subject to minimum numbers. Due to seasonal changes and the closure of Mitchell River National Park, a wet season itinerary is offered between Oct-May.

Bungle Bungle Explorer



Air Kimberley

Operates: Mon, Wed, Fri & Sun (Feb - Dec)*
Duration: Full day
Adult: \$1,940
Child: \$1,840 (3-12 yrs)

Located on Jaru and Gija country, explore the orange and black striped sandstone domes at the World Heritage-listed Purnululu National Park. Flying out to the Bungle Bungles, fly the scenic pattern around the Bungle Bungle Massif marveling at the spectacular domes from above. You will then embark on your Bungle Bungle adventure to the southern Dome walk where you will enjoy a moderate 3km guided walk amongst the famous eroded towers and black and orange beehive structures with lunch in the stunning iconic natural amphitheatre known as Cathedral Gorge. *Subject to minimum numbers.

Kimberley Day Cruise



Kimberley Day Cruise

Operates: Tue, Wed, Fri, Sat (Apr-Sep)

Departs: 5.00am ex Broome, 7.00am ex Cygnet Bay

Duration: Approx 12hrs Broome, 9hrs ex Cygnet Bay

Adult: \$1,275

Child: \$1,225 (4-14yrs)

An unforgettable journey, see it all in one day!

Embark on a one-day journey to witness the awe-inspiring Horizontal Falls in a brand new way. As you take in the breathtaking scenery of the Buccaneer Archipelago, indulge in a 7-course feast of Western Australian seafood and locally sourced ingredients, while you soak up the stunning views and learn about the unique geography and history of the region.

Mangrove Discovery Experience



Narljia Experiences

Operates: Daily (Subject to tidal movements)

Duration: 2hrs (Take a hat, sunscreen, water bottle and insect repellent)

Adult: \$100

Child: \$65 (5-13yrs)

Bart Pigram is the dedicated owner and guide, who will share his Aboriginal perspective first hand.

Immerse yourself in the natural beauty of Roebuck Bay's low tide mangrove ecosystem with local Aboriginal tour guides sharing the culture and history of Broome and the bay. The fun and engaging 2km walk in the mangroves and mudflats will give you a greater appreciation of Broome's natural environment and marine life and a complete understanding of Aboriginal history and settlement of the town. So slip on the boots, spray on the repellent and jump on The Mangrove Discovery Experience.

Rubibi Cultural Tour



Kimberley Cultural Adventures

Operates: Daily

Departs: Times vary

Duration: 5hrs

Adult: \$150

Child: \$120 (7-14yrs)

You will dive deep into Broome's cultural past. Discover the abundance of bush foods and medicine plants that have sustained the first people of the Kimberley for millennia. Experience a private didgeridoo performance, get hands on with some traditional Nyul Nyul artefacts and enjoy samples of Robbie's delicious wild harvest bushfoods. Hear stories of how Broome became the centre of the World's pearling industry, the illegal practice of blackbirding, the harsh working conditions and social segregation of Broome's Aboriginal people. Explore forgotten roads and historic landmarks and hear the local stories connected to them.

Willie Creek Pearl Farm Tour



Willie Creek Pearls

Operates: Daily (Apr to Oct)

Modified Schedule from Nov to Mar

Duration: 3hrs (+2hrs travel time from Broome)

SELF DRIVE

Adult: \$95

Child (5-15yrs): \$55

COACH

Adult: \$149

Child (5-15yrs): \$85

This multi award-winning tour gives a unique insight into the fascinating process of modern pearl farming, from shell to showroom.

You will see the inner workings of an operating commercial pearl farm and discover what makes the perfect pearl. Cruise Willie Creek's calm, azure waters and watch a breathtaking live pearl harvest.

All tours include delicious refreshments and pre-booked lunch is available on select tours for an additional \$40pp. A must-do experience!

Pearl Luggers Tour



Willie Creek Pearls

Operates: Daily

Modified Schedule from Nov to Mar

Duration: 1.5hrs

Adult: \$35

Child: \$20 (5-15 yrs)

Be captivated by 150 years of history as you discover how Broome's unique maritime and pearling heritage unfolded from the heart of Chinatown.

This 1.5 hour tour features a fully rigged and restored pearl lugger surrounded by a replica inter-tidal jetty. You will see, touch and hold rare and valuable pearling, diving and mother of pearl artifacts as you learn about the evolution of the pearling industry in Broome and get to taste the rare delicacy of pearl meat.

BROOME TOURS

Horizontal Falls Half Day Tour ex Broome & Derby

Operates: Daily (Mar to Nov)

Departs: 5:30am

Duration: 6hrs

Ex Broome: Adult: From \$1,085* **Child:** From \$935 (4-12 yrs)*

Ex Derby: Adult: From \$995* **Child:** From \$885 (4-12 yrs)*

Horizontal Falls - An adventure like no other! As the only operator based at the falls you will depart from Broome in a state-of-the-art seaplane and fly over the spectacular Buccaneer Archipelago before landing on the waters of Talbot Bay right near the magnificent Horizontal Falls!

On board our power boat you will experience an exciting cruise through the Horizontal Falls, before cruising through the surrounding bays and creeks. Finish with a swim in the marine viewing enclosure, the only one found in WA. All this in a half day before a low-level scenic flight back to Broome.

Includes: Either breakfast or lunch and Marine Park fee.



Horizontal Falls and Dampier Peninsula Full Day Tour

Operates: Daily (Mar to Nov)

Departs: 5:30am

Duration: Full day (10hrs)

Adult: \$1,130* **Child:** \$995 (4-12 yrs)*

Experience Horizontal Falls by Fast Boat, as well as incorporating the Dampier Peninsula.

This full-day tour takes you to Talbot Bay for an exciting Horizontal Falls experience as well as incorporating highlights of the Dampier Peninsula including a visit to Cygnet Bay for a fascinating tour of Australia's oldest pearl farm, Ardyaloon Aboriginal Community and their Aquaculture Hatchery.

Includes: A hot breakfast, locally sourced barramundi and salads for lunch and Marine Park fee.



Horizontal Falls Luxury Overnight Stay

Operates: Daily (Mar to Nov)

Duration: 24hrs

Adult: \$1,785 per person, twin share (Main deck)*
\$2,675 single occupancy (Main deck)*

This tour has it all – Seaplane and helicopter flight, power boat rides, fishing and scenic cruise!

The only tour to see both the incoming and outgoing tides of the Horizontal Falls with the only operator based in Talbot Bay.

For those who want it all, this tour combines a stunning seaplane flight, numerous power boat cruises through the falls, an exhilarating helicopter flight, the opportunity to fish for Barramundi, all whilst staying in the luxury of the modern houseboat.

Includes: Private air-conditioned cabin, lunch, dinner and fully cooked breakfast. Includes Marine Park fee.



15 Day Jewels of the Kimberley & Faraway Bay with Outback Spirit

Adult: From \$13,320 per person, twin share* 15 days all-inclusive touring (based on Sept departure)

For an extraordinary small group adventure like no other, join Outback Spirit on an all-inclusive 4WD Outback expedition and experience the rich beauty of the Kimberley region. Over 15 days, explore diverse landscapes, stay in unique accommodation and immerse yourself in untouched wilderness. Experience moments of magic in awe-inspiring locations like King George Falls, Mitchell Falls, the Bungle Bungles and what is described as one of the greatest natural wonders of the world, the Horizontal Falls.

Spectacular scenic helicopter flights, seaplanes, exciting boat rides, guided walks and rock art layered with meaning will leave an everlasting impression. With a custom fleet of Mercedes Benz 4WD's, you can explore these lands in comfort and style.

Includes: 14 nights accommodation including 2-nights in our exclusive safari camp; all meals, attraction, entry and cruise fees while on tour; experienced and professional tour driver / guide



Cygnets Bay Pearl Farm

Cape Leveque Road, Dampier Peninsula

From \$308 per room, per night

Immerse yourself in the story of the Australian Pearl at Cygnets Bay Pearl Farm. Situated only 2 hours north of Broome on the tip of the Dampier Peninsula. Our tours and restaurant are open to day visitors and in-house guests alike. We are now 2wd accessible as the Cape Leveque Road has been fully sealed.

Property Facilities

Experiences include pearling, cultural and marine tours where you will discover pearling secrets from pioneers of the industry - a remarkable Australian family story with your opportunity to purchase pearls direct from the waters in which they were farmed. Feel the power of the world's largest tropical tides on our Giant Tides or Waterfall Reef Sea Safaris, join Terry Hunter on his cultural coast to creek walks or relax by our pool and try fresh pearl meat at our licenced restaurant.

Accommodation

Ensulted safari tents, original pearling shacks and campground with a million stars views are located in a tranquil bush setting just under 1km from our main restaurant and reception village.



Waterfall Reef / Giant Tides Sea Safaris



Pearl Farm Discovery Tour



Cygnets Bay Pearl Farm

Operates: Dependant on tides from Cygnets Bay Pearl Farm
Duration: 2hrs

Adult: \$260 **Child:** \$146 (5-15yrs)

Feel the power of the world's largest tropical tides on our Giant Tides or Waterfall Reef Sea Safaris. Immerse yourself in the story of the Australian Pearl with our range of pearling, cultural or marine tours, stay overnight or just for a meal in our licenced restaurant.

Cygnets Bay Pearl Farm

Operates: Daily from Cygnets Bay Pearl Farm
Duration: 1hr

Adult: \$39 **Child:** \$20 (5-15yrs)

Discover pearling secrets from pioneers of the industry – a remarkable Australian family story. With your opportunity to purchase pearls direct from the waters in which they were farmed. Situated only 2 hours north of Broome on the tip of the Dampier Peninsula.

KIMBERLEY EXTENDED TOURING

Kimberley Wild Expeditions

Kimberley Wild Expeditions are renowned as the experts in Kimberley adventure tours. Locally owned, operated and based in Broome, they are truly passionate about the Kimberley. Their professional guides have extensive experience in the Australian outback. Experts in local culture, history, wildlife, bush tucker and native flora, they offer a genuine insight into the region. All guests travel in a range of top quality vehicles, including 4WD coaches and 'off road' coaches.

Ask us about child and single supplement pricing and additional tour options, 5 Day Broome to the Bungle Bungles, 6 Day West Kimberley Adventure and 12 Day Kimberley Walking.



2 Day Dampier Peninsula Experience

Camping: Adult \$1,095

Departs Broome: Wednesdays and Fridays (May-Sep)

Highlights include: • Buccaneer Archipelago Sea Safari • Cygnet Bay Pearl Farm Tour • Beagle Bay Pearl Shell Church One Arm Point Aquaculture Hatchery



5 Day Kimberley Family Safari

Camping: Adult \$1,695 / Child \$1,595 (4-12yrs)

Departs Broome: Select Wednesdays in June, July & September

Highlights include: • Gibb River Road • Derby Prison Tree • Windjana Gorge • Tunnel Creek • Bell Gorge • Galvans Gorge • Manning Falls • Adcock Gorge • Norval Art Gallery.



11 Day Wild Kimberley Loop

Camping: Adult \$4,195 / Camping Plus: Adult \$4,950

Departs Broome: Sundays and Fridays (May-Sep)

Highlights include: • Gibb River Road • Windjana Gorge • Indigenous-guided walk through Tunnel Creek • Dalmanyi (Bell Gorge) • Manning Falls • El Questro Wilderness Park • Zebedee Springs • Emma Gorge • Lake Argyle • Bungle Bungles • Echidna Chasm • Cathedral Gorge



13 Day Kimberley Explorer

Camping: Adult \$5,395 / Camping Plus: Adult \$6,295

Departs Broome: Most Wednesdays and Fridays (May-Sep)

Highlights include: • Buccaneer Archipelago Sea Safari • Cygnet Bay Pearl Farm Tour • Beagle Bay Pearl Shell Church Altar • One Arm Point Aquaculture Hatchery • Gibb River Road, Windjana Gorge • Tunnel Creek, Dalmanyi (Bell Gorge) • Manning Falls • El Questro Wilderness Park • Zebedee Springs • Kununurra • Lake Argyle • Bungle Bungles • Echidna Chasm • Cathedral Gorge



14 Day Kimberley Trail Including Mitchell Plateau

Camping: Adult \$5,395

Departs Broome and Darwin: Select Tuesdays (May-Oct)

Highlights include: • Gibb River Road • Windjana Gorge • Tunnel Creek, Dalmanyi (Bell Gorge) • Galvans Gorge • Mitchell Falls • Mitchell Falls Scenic Transfer Flight • Bradshaw Rock Art • Drysdale River Station • El Questro Wilderness Park • Zebedee Springs • Emma Gorge • Bungle Bungle Range • Echidna Chasm • Cathedral Gorge • Kununurra • Lake Argyle



Adventure Wild



Adventure Wild Kimberley Tours offer quality, boutique guided camping tours that exceed your expectations. Owned and operating exclusively in the Kimberley region, they explore, experience and appreciate this pristine environment.

With two professional guides on every tour, small groups (max 16) receive a safe, educational and comfortable journey through the remote outback. Your guides are mature, married couples working together with unique compatibility and teamwork. The quality of service is second to none. Travel in custom-built, all terrain, air conditioned vehicles. Our fleet is well maintained and cared for. Our guides cautious and experienced drivers sharing the responsibilities. Your comfort and safety is our priority.

Permanent campsites, sunset drinks, nightly camp fires and relaxed itineraries allow more time to enjoy this ancient, spectacular landscape. Your journey culminates at an exclusive Adventure Wild campsite alongside a beautiful billabong on a working cattle station. All-inclusive meals, park entry fees, accommodation, all bedding & an Adventure Wild signature travel bag, yours to keep. No single supplement and no requirement to share. Vehicle storage available.



12 Day Broome to Broome Kimberley Adventurer Safari

from \$4,800 per person

Adventure Wild

The ultimate Kimberley experience from tropical Broome to spectacular gorges and beyond, an outback tour that has the lot.

Departs: Broome - Wednesdays and every second Friday (May – Sep)

Highlights include:

- Discovery journey along the Gibb River Road to explore and experience: Bandilngan (Windjana Gorge); Dimalurru (Tunnel Creek); Galvan's Gorge; Mt Barnett Station; Manning Falls; Pentecost River; El Questro Station; Emma Gorge; El Questro Gorge; Zebedee Springs and Pigeon Lookout.
- Additional options: *Champagne Chamberlain Cruise, Scenic flight over Cockburn Ranges or to explore the Mitchell Plateau with a fly | drive | walk | helicopter flight and a flight into Kununurra for sunset.
- Relax and enjoy the east Kimberley town of Kununurra, the Ord River Scheme, Diversion Dam, Ivanhoe Crossing, local agriculture, art galleries and unique stone craft. Take an optional tour on Lake Argyle, the Ord River or fish for Barramundi in the Lower Ord. Purnululu National Park and the Bungle Bungles

include walking amongst the beehives on the Domes Walk, taking in the view at Piccaninny Creek lookout, Cathedral Gorge and stunning Echidna Chasm. Take an optional helicopter flight for a bird's eye view.

- We explore the Great Northern Highway, Halls Creek, the China Wall and Fitzroy Crossing. Your final night camped beside a billabong beneath billions of stars in the serenity of the outback at our exclusive site on a working cattle station.

Additional Tours:

9 Day Gibb River Road and Kununurra
Broome to Kununurra - From \$4,100 per person

7 Day Gibb River Road Explorer
Broome to Kununurra - From \$3,800 per person

4 Day Kununurra Bungle Bungles and Broome
Kununurra to Broome - From \$2,150 per person

Note: limited availability on 4 day tours

KIMBERLEY EXTENDED TOURING

APT Kimberley Wilderness Adventures

Traverse the rugged Kimberley in safety and style with APT. With more than 45 years' experience touring in the region, APT are truly the experts in the Kimberley.

Everything down to the last detail is taken care of, including exceptional dining and accommodation at APT's exclusive network of wilderness lodges, all-inclusive sightseeing with an expert driver-guide, national park fees, airport transfers and more.

Travel aboard APT's state-of-the-art, custom-built Mercedes Benz 4WD vehicles with a maximum of just 22 guests.



9 Day Essence of the Kimberley

from \$6,895 per person

Departs Broome: Selected dates between May to September

Highlights include: • Enjoy sunset drinks after exploring the Bungle Bungle Range • Enjoy a relaxed wildlife cruise on the Ord River in Kununurra • Stay 4 nights at APT's wilderness lodges • Soak in the thermal pools of Zebedee Springs in El Questro • Admire ancient marine fossils embedded in Windjana Gorge



13 Day Iconic Kimberley

from \$10,495 per person

Departs Broome: Selected dates between May to September

Highlights include: • See rarely seen rock at Mitchell Falls • Wade through the cool waters of Tunnel Creek • Discover Purnululu National Park including Cathedral Gorge and Echidna Chasm • Hike to stunning Emma Gorge and view the 65 metre droplet waterfall • Stay 2 nights at each of APT's Wilderness Lodges • A helicopter flight over Mitchell Falls



15 Day Kimberley Complete

from \$10,995 per person

Departs Broome: Selected dates between May to September

Highlights include: • Take a breathtaking helicopter flight over Mitchell Falls • Stay 6 nights at APT's wilderness lodges • Explore the Bungle Bungle Range in-depth • Discover El Questro • Enjoy a sunset dinner cruise on Lake Kununurra • Journey along the Gibb River Road • Admire impressive Wandjina and Gwion Gwion rock art



17 Day Kimberley and the Top End

from \$12,995 per person

Departs Broome: Selected dates between May to September

Highlights include: • Admire ancient Wandjina and Gwion Gwion Rock Art • Stay 6 nights at APT's wilderness lodges • Cruise on Yellow Water Billabong in Kakadu National Park • Tour spiritual Arnhem Land.



Explore The West Kimberley



Spinifex Hotel

6 Clarendon Street, Derby

From \$330 per room, per night

Spinifex Hotel is 20 minutes' walk from the Derby Jetty, popular for fishing, boating and beautiful sunsets.

Property Features

The Spinifex Hotel has a vast range of facilities to cater for all guests, swimming pool, on site restaurant which also offers take away, bar, laundry facilities and secure onsite parking.

Accommodation

Each room has its own kitchenette complete with a stove top hot plate, microwave, all cooking utensils and fridge. The rooms also come with their own private balcony, 42" TV showing all available channels as well as Fox Sports, tea and coffee making facilities, and private ensuite with shower and combination washer/dryer.



Fitzroy River Lodge, Fitzroy Crossing

277 Great Northern Hwy, Fitzroy Crossing

From \$372 per room, per night

The Fitzroy River Lodge is located in the heart of the Kimberley on the banks of the mighty Fitzroy River, in Fitzroy Crossing, a great place to stop and explore Geikie Gorge, Windjana Gorge, Tunnel Creek, and Mimbi Caves. At the Fitzroy River Lodge you can relax on fifty acres of natural bushland with shady trees. We look forward to making your stay memorable.

Property Features

Swimming pool, restaurant and bar, BBQ's and laundry facilities.

Accommodation

Choose from the luxury self-contained Riverview Studios or the modern spacious motel rooms or the Safari Tents. There are also 2 Bedroom Units that are suitable for the entire family.



Kimberley Hotel, Halls Creek

Roberta Ave, Halls Creek

From \$185 per room, per night

The Kimberley Hotel is conveniently located adjacent to the airport and only 500 metres from the town centre of Halls Creek. It is a comfortable base to explore the surrounding goldfields and Wolf Creek Meteorite Crater and is only an hours drive to the turnoff to World Heritage listed Purnululu National Park.

Property Features

The hotel is an oasis in a rugged outback landscape, with delightful gardens and views. The hotel features an attractive colonial style lounge, cocktail bar and restaurant, traditional Sports Bar, swimming pool and spa. Secure car parking is provided.

Accommodation

Set amongst gardens, with wide verandah's and pathways connecting the accommodation building to the restaurant complex. All rooms offer airconditioning, ensuite, TV with free to air movies and Foxtel. Standard and Deluxe rooms have tea and coffee making facilities. 1 and 2 bedroom apartments have a private deck area, full kitchen, washing machine and dryer.



GIBB RIVER ROAD ACCOMMODATION

Adventure along the Gibb River Road



Bell Gorge Wilderness Lodge

227kms from Derby along the Gibb River Road

From \$720 per room, per night

Situated in a beautiful and unique setting close to the Gibb River Road and the Imintji Aboriginal Community, the lodge takes full advantage of its prime indigenous-owned site. It affords magnificent views of the Wunaamin Miliwundi Ranges and is conveniently located close to some of the Kimberley's most beautiful gorges. With a full redevelopment in 2020, has taken guest experience to the next level.

Property Features

APT Wilderness Lodges are built with our 'touch of luxury in the wilderness' philosophy. Three course gourmet dinners and hearty breakfasts are included. Packed lunches are available at an additional cost. The Lodge's liquor license allows you to purchase beer or wine. Our friendly lodge hosts are always on hand to provide personalised service.

Accommodation

26 Superior Tents offering twin, king or triple share bedding. Crisp linen, snug doonas, lighting and a front deck and private ensuites with hot showers and flushing toilets.



Mount Hart Wilderness Lodge

50km off the Gibb River Road

From \$719 per room, per night

Nestled in a hidden oasis along the famous Gibb River Road, Mount Hart Wilderness Lodge is a popular base for adventurous travellers. With its unbeatable proximity to many of the region's major attractions, it is the perfect gateway to explore the West Kimberley including Horizontal Falls, Twin Flame Falls, Bell Gorge and more. Whether you're seeking a cozy camping experience, lavish glamping or a charming homestead retreat, Mount Hart offers accommodation for every kind of traveller. Traverse the region by land or take your exploration to new heights with exclusive Scenic Flights, where you'll soar above beautiful landscapes

Property Features

Scenic helicopter flights, all-Inclusive tour packages from Broome, land safari tours, licensed bar, premium dining experience, laundry and diesel available.

Accommodation

Ensuited Safari Tents, Homestead Rooms, Settlement or Riverside Deluxe Tents or Riverside Campground all with shared facilities available. Breakfast and à la carte dinner included with Homestead and Safari Tent rooms.



Mt Elizabeth Station

from \$175 per room, per night
based on 1 May - 30 Sep 23

Gibb River Road

From \$190 per room, per night

Mt Elizabeth Station is about as close to the heart of the Kimberley region in Western Australia as you can get. Located roughly half way between Kununurra and Derby on the iconic Gibb River Road, Mt Elizabeth is a half-million acre, fully operational cattle station that also welcomes guests. Offering camping, dinner, bed and breakfast options within a genuine outback setting.

Property Features

Explore the station by 4WD, there are two gorges, hiking and swimming.

Accommodation

Mt Elizabeth Station offers en-suited Outcamp Rooms and Homestead Rooms with shared facilities.

We recommend including dinner and breakfast, ask our team for details.



Drysdale River Station

Kalumburu Road, Northern Kimberley

From \$191 per room, per night

Located 60km off the Gibb River Road, a great place to break your road trip to the Mitchell Falls.

Property Features

Accommodation, licenced bar and restaurant, meals and snacks. Shop, fuel, tyres – new and repairs. Scenic flights.

Accommodation

Offering a variety of accommodation including double, twin, triple, quad and family rooms. Choices include shared facilities or ensuites and air-conditioning.



Mitchell Falls Wilderness Lodge

70kms from the Kalumburu Road turn-off

From \$742 per room, per night

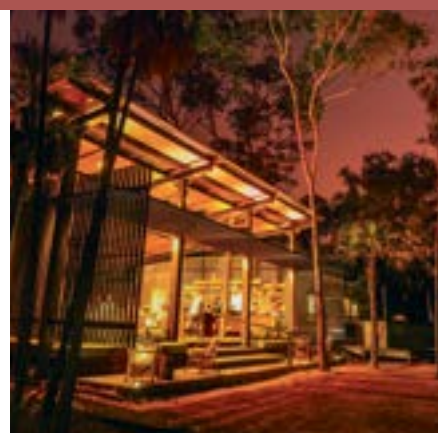
The lodge provides a unique opportunity to be surrounded by truly untouched wilderness. Situated in close proximity to Mitchell Falls and beside a delightful waterhole on Camp Creek, the lodge is a perfect base to explore the Mitchell Plateau and Mitchell Falls. In time for the opening of the 2024 season, the lodge will have received a transformative refurbishment including brand-new, spacious tented cabins featuring ensuites, as well as a new swimming deck and boardwalk.

Property Features

The Ungolan Pavilion fuses modern Australian, local craft and indigenous influences and includes a lounge, bar, library and dining area. A deck offers easy access to the lodge's private waterhole on Camp Creek. Three course gourmet dinners and hearty breakfasts are included. Packed lunches are available at an additional cost. The Lodge's liquor licence allows you to purchase beer or wine.

Accommodation

24 tented cabins with king or twin beds, crisp linen, snug doonas, lighting and a front deck. Private ensuites have hot showers and flushing toilets.



Kimberley Coastal Camp

Admiralty Gulf, Kimberley Coast

From \$3,200 per room, per night

Kimberley Coastal Camp is the most exclusive retreat in the Kimberley. A place for the heart and soul, limiting guests to just 16 (max), creating an intimate atmosphere while reducing the impact on this fragile environment. A benchmark in wilderness development with access limited to helicopter or float plane, it would be hard to find a place that intrudes less on its surroundings.

Property Features

Spend your days fishing for the fabled Barramundi and dozens of other tropical species in the pristine azure waters the area is famous for. Discover intriguing Wandjina and Gwion Gwion (Bradshaw) rock art which has been part of this landscape and the lives of its traditional owners for thousands of years. You may prefer to take it easy on the boat, visiting deserted islands fringed by boab trees, or just relax on your day bed.

Accommodation

Eight secluded, oceanfront bungalows with natural shell grit flooring, all with ensuites, and bathrooms built into the rock face add to the unique feel of this exclusive destination retreat.



Home Valley Station

Gibb River Road

From \$370 per room, per night

Home Valley is a unique tourism facility on the Gibb River Road, about 1.5 hrs from Kununurra, near the famed Pentecost River Crossing. The Traditional Owners of this Country, the Balanggarra people manage this resort and offer a unique Aboriginal tourism experience on their ruggedly stunning homelands. Home Valley offers a range of accommodation options to suit the needs of any type of traveller, ensuring your stay on Balanggarra Country will be a culturally rich and enjoyable one.

Property Features

Home Valley Stations offers a swimming pool, playground, Dusty's Bar and Restaurant, General Store, washing machines and clothes lines, and an airstrip.

Accommodation

Riverside Suites offer luxury accommodation in the Kimberley. Shaded by towering eucalyptus and situated along the banks of beautiful Bindoola Creek. Homestead Deluxe rooms offer a modern take on the original stockman's quarters with corrugated iron walls, cool concrete floors, ensuite facilities, and king size beds fitted with send-you-to-sleep linen.



GIBB RIVER ROAD ACCOMMODATION

El Questro



Emma Gorge Tented Cabin

Gibb River Road, East Kimberley

Located in the East Kimberley, El Questro encompasses 700,000 acres of vast and stunningly beautiful terrain. From deep gorges and majestic ranges to thermal springs, mud and salt-flats, rainforests and cascading waterfalls, El Questro is a destination unlike any other.

El Questro – Emma Gorge **From \$553 per room, per night**

With 60 safari-style tented cabins, each equipped with ensuites and fans, this is a comfortable way to experience sleeping under canvas, while still being surrounded by home comforts. Set off on the Emma Gorge walk and experience nature on your doorstep including the region's spectacular flora and fauna and the stunning turquoise pool of Emma Gorge with its droplet waterfall and thermal spring.

El Questro – Station **From \$485 per room, per night**

The central hub of El Questro, The Station is set on the banks of the Pentecost River and offer air-conditioned resort style bungalow accommodation and an extensive range of daily tours to explore the vast and ancient landscape. Relax on the riverbank, swim in the tranquil swimming hole and in the evenings, enjoy a beverage at the Swinging Arm Bar and a meal at the nearby Cantina or at the a la carte Steakhouse Restaurant.

El Questro Homestead **From \$2,805 per room, per night**

Includes all dining, beverage selection and private Homestead experiences. The luxurious El Questro Homestead is a ten-suite hideaway nestled amongst frangipani trees and cantilevered cliffside of the tranquil Chamberlain River. Discover the Kimberley wilderness with a wide range of complimentary excursions and exclusive tours. Part of Luxury Lodges of Australia, the intimate accommodation is complete with a chef on hand to craft gourmet seasonal meals and an open bar is available around the clock.



El Questro Homestead

The Berkeley River Lodge

Berkeley River, East Kimberley

From \$2,850 per room, per night

The Berkeley River Lodge is truly remote and located on a spectacular sand dune 105m high. The Berkeley River Lodge is a stone's throw away from scenic waterfalls and freshwater rock pools. This really is one of the last true wilderness areas and you can be one of the lucky few to experience this pristine section of the Western Australian coastline. Scenic air transfers depart Darwin and Kununurra.

Property Features and Experiences

The main lodge has been designed to blend contemporary architecture into the surrounding environment and incorporates indoor and outdoor dining facilities. A 20-metre lap pool will satisfy those wanting to exercise or just paddle. Poolside lounges and a library of books and magazines provide a great excuse to lay back and catch up on a bit of reading.

Berkeley River Cruises: Flanked by towering rock escarpments, harbouring secret water holes, waterfalls and an abundance of birdlife, a cruise along this river is an integral part of the Berkeley River experience.

Bush and Nature Expeditions: Your guides have designed several walks that take in the best of the surrounding area and focus on the native flora, fauna and marine life. Guests can explore the Berkeley and its coastal environments, whilst taking in the breathtaking perspectives of this ancient and remote landscape. Or perhaps for the thrill seekers throw a line in and try your luck for a Barramundi in the upper Berkeley. All fishing gear is supplied.

Waterfalls: The Berkeley River boasts many stunning waterfalls that may flow all year round, but are best experienced in April and May after the rains of the wet season. Freshwater swimming holes can be experienced year-round.

Accommodation: All Villas have fabulous water views and comprise of lavish king or twin sleeping areas. The accommodation also includes an open air bathroom with shower and free-standing bathtub. Other features include; air conditioning, outdoor balcony furniture for in room dining, and premium amenities. Villas are serviced daily. All meals are included; breakfast, lunch and a 5 course degustation dinner with matching wines. A select range of beverages are included; soft drink, beer, wine and basic spirits are provided with meals and on some activities. A reserve wine list, top shelf spirits and cocktails are available at an additional cost.



Faraway Bay

Faraway Bay, Drysdale River

From \$1,400 per room, per night

Offering one of the most authentic and unique experiences at a Kimberley holidays coastal retreat, Faraway Bay is not just another modern resort in a remote location – it is a unique wilderness retreat built on character, local Kimberley history and true outback style.

Property Features

Eagle Lodge is the heart and soul of Faraway Bay eco retreat, and is perched on a rocky hilltop overlooking a freshwater plunge pool, spa and breathtaking bay. This bush-built pole and corrugated iron roof structure is ideally suited to the climate and spectacular setting. The unique open-air design makes it perfect for the Kimberley climate. Here, you'll enjoy lounging, birdwatching, sunsets, swimming, wining, dining and tranquility.

Accommodation

Faraway Bay provides unrivalled luxury, with eight spacious cabins scattered among natural bush. These offer unrivalled privacy and 180-degree views of a spectacular cliff-lined bay. Cocooned in this natural environment, there is nothing to distract you from absorbing the extraordinary sights, sounds and magic of this isolated slice of the Kimberley.



Bullo River Station (Just over the Northern Territory border)

9870 Victoria Highway, Baines, Northern Territory (3 hours drive from Kununurra)

From \$2,700 per room, per night

A working cattle station and homestead set in the vast countryside of the Northern Territory. Set on 500,000 acres of privately owned countryside at the convergence of the Bullo and Victoria Rivers, Bullo River Station is a working cattle station near the Western Australian and Northern Territory border.

Property Facilities

Your day will be filled with dust, sweat and the exhilaration of station life. But don't worry, we'll be sure to take some time to enjoy lunch at a billabong, sneak a quick dip at a swimming hole and enjoy the stunning outback country of Bullo River Station.

Accommodation

Inspired by our landscape, the 12 air conditioned guest rooms are styled to provide an inviting sanctuary, perfect after a day on the station. Each room opens out onto the shady lawns and is cool and comfortable, with a king or twin-beds, air-conditioning and modern ensuite. Rooms are serviced daily.



EAST KIMBERLEY ACCOMMODATION & TOURS

Bungle Bungle Wilderness Lodge

Purnululu National Park

From \$800 per room, per night

The award-winning Bungle Bungle Wilderness Lodge offers unparalleled accommodation in the heart of Purnululu National Park. The lodge offers convenient access to the stunning domes of the Bungle Bungle Range, and the breathtaking beauty of Piccaninny Creek, Cathedral Gorge, and Echidna Chasm.

Lodge Amenities

APT Wilderness Lodges are built with our 'touch of luxury in the wilderness' philosophy. Hearty breakfasts and three course gourmet dinners are served beneath the stars in the alfresco dining room. Packed lunches are available at an additional cost. The lodge's liquor license allows you to purchase beer or wine. Our friendly lodge hosts are always on hand to provide personalised service.

Accommodation

Spacious cabins offer king size or twin beds, crisp linen, snug doonas, lighting and a front deck. Private ensuites have hot showers and flushing toilets.



Bungle Bungle Savannah Lodge

Purnululu National Park

From \$782 per room, per night

Explore a landscape 350 million years in the making, then refresh in our pool, replenish with delicious meals and spend a night under the starry skies in the comfort of a private cabin at Bungle Bungle Savannah Lodge.

Lodge Amenities

Hard-walled cabins with timber flooring, a front deck, ensuite bathroom and comfortable hotel quality queen or king split beds. Relax at the end of the day in the only swimming pool located in the National Park or enjoy a cold beverage at the licensed "Bungles Bar". A chef-prepared meal infused with native herbs and spices is served in the Lodge dining area or outside under the stars with the ambience of an open fire.

Accommodation

With 26 ensuite cabins, the Lodge offers twin share, double or family options with a flushing toilet, heated shower, towels, linen and eco-friendly bathroom products. Rates include dinner and breakfast.



Bungle Bungle HeliSpirit Tours from Purnululu National Park



Bungle Bungle Domes Special \$1,159 pp

The perfect option for a snapshot of the stunning Bungle Bungle Range. Soar over the mouth of the spectacular Piccaninny Gorge to witness the dramatic Cathedral Gorge and iconic black and orange striped Bungle Bungle domes.

Bungle Bungle Domes & Red Rock Gorges \$499 pp

A 30-minute flight brimming with more impressive natural features than you could imagine. The Bungle Bungle Range is almost 99 times the area of Uluru. Take in the remarkable hidden red rock gorges of the north-west tip and Horseshoe Valley before soaring over Piccaninny Gorge, Cathedral Gorge and the show-stopping striped Bungle Bungle Domes.

The Ultimate Bungle Bungle Flight \$599 pp

The name says it all, this incredible flight gives breathtaking views of Y Gorge, Deep Gorge and 'The Twins' before continuing on to the highest point of the Bungle Bungle and the spectacular red rock gorges of the north-west. Soar over the Valley of the Giants with its massive sandstone structures before following the southern face to discover the mouth of Piccaninny Gorge, Piccaninny Creek, Cathedral Gorge and the famous orange and black striped Bungle Bungle domes.

2 Day / 1 Night Bungle Bungle Overnight Explorer



Bungle Bungle Guided Tours

Operates: Apr to Sep

Adult: \$2,059

Child: \$1,589 (3-12yrs)

Start your day with a thrilling scenic flight from Kununurra, with views of the Ord River, Lake Argyle, the Osmand Ranges, and a spectacular aerial circuit over the Bungle Bungle Range. Landing in Purnululu National Park, join a guided walk of the famous beehive-shaped domes into Cathedral Gorge. Take in the jaw dropping natural acoustics and towering cliffs surrounding you over a picnic lunch. At the end of the day, return to the comfort of your Bungle Bungle Savannah Lodge cabin, or relax by the pool. Dinner is served in the lodge dining area or outdoors under the Kimberley stars.

Day 2 – After breakfast, drive to the northern end of Purnululu National Park, to follow your guide on a walk into the extraordinary Echidna Chasm. Enjoy a picnic lunch surrounded by the magnificent scenery of the National Park. The return flight to Kununurra provides views of the Argyle Diamond Mine, Ragged and Carr Boyd Ranges. The tour days may be reversed due to availability.

Hotel Kununurra

37 Messmate Way, Kununurra

From \$150 per room, per night

Centrally located in the heart of town, close to all amenities and only 4km from the airport, Hotel Kununurra welcomes guests with friendly and personalised Kimberley style hospitality and is the perfect base to explore the stunning scenery the East Kimberley has to offer.

Property Features

Dine at the famous Zebra Rock Bar and Restaurant, an attraction in its own right. The Beer Garden, Sportsman's Bar and TAB are great places to relax and enjoy the local hospitality. The property has a drive-through bottle shop, swimming pool and children's pool, BBQ facilities and a guest laundry.

Accommodation

50 tastefully decorated spacious hotel rooms with ensuite bathrooms, air-conditioning, in-house movies, ceiling fans and tea/coffee making facilities are serviced daily. There are a range of rooms to suit all budgets.



Kununurra Country Club and Resort

47 Coolibah Drive, Kununurra

From \$240 per room, per night

Complete convenience and genuine local hospitality in the town centre, the Country Club is your 4.5 star sanctuary from which to explore the incredible landscapes of the East Kimberley.

Property Features

Set in lush tropical gardens, enjoy an excellent onsite restaurant, free Wi-Fi, complimentary pre-booked transfers, the sparkling pool, guest laundry and valet services.

Accommodation

Air-conditioned, ensuited rooms nestled among the gardens, with finishes and amenities for the comfort of discerning leisure or business traveller.



Discovery Parks - Lake Kununurra

Lakeview Drive, Kununurra

From \$142 per room, per night

Located in Western Australia's remote East Kimberley, Discovery Parks – Lake Kununurra is a lakeside retreat set on 10 acres of bushland and provides a gateway to some of Western Australia's most remarkable natural attractions.

Property Features

Only a short drive from the town centre, the property features a range of amenities including a swimming pool, BBQ facilities, kiosk, laundry facilities and Wi-Fi.

Accommodation

With diverse accommodation options from spacious cabins (Standard, Superior and Deluxe) to camping sites, the property boasts breathtaking waterfront views. Enjoy the views from your cabin's deck as you relax with friends or settle along the banks to enjoy the sunset.



KUNUNURRA ACCOMMODATION

Discovery Resorts - Lake Argyle

Lake Argyle Road, via Kununurra

From \$165 per room, per night

Discovery Resorts – Lake Argyle is set amongst the rugged and remote East Kimberley landscape with vistas overlooking the vast freshwater lake, nearly 20 times larger than Sydney Harbour. The magnificent scenery and peaceful isolation of Lake Argyle make it a must-see destination when visiting the Kimberley.

Property Features

The centrepiece of Discovery Resorts – Lake Argyle is the stunning infinity pool set on a cliff edge, overlooking Lake Argyle. The property offers a bar & restaurant, general store and fuel. There is a range of touring options to explore the surrounding areas, including lunch and sunset cruises on the lake.

Accommodation

Architecturally designed 1, 2 or 4 bedroom Lakeview Cabins are fully self-contained with stunning views from the private deck overlooking Lake Argyle. Free-standing cabins with private verandas and ensuites can sleep up to 5 guests.



2 Night Alluring Lake Argyle Package

Experience the best of Lake Argyle with this 2 night package inclusive of meals and guided tours. Transfers operate every Monday between May - August 2024. Self-drive operates Tuesday - Saturday between April - October 2024 and in March 2025. Ask us about pricing!

Package inclusions:

- 2 nights' accommodation
- Meals: 2 x Breakfast, 1 x Lunch, 2 x Dinner
- Watch the Kimberley sunset from the infinity pool
- Kimberley Durack Lunch Explorer Cruise



Freshwater East Kimberley Apartments

19 Victoria Hwy, Kununurra

From \$304 per room, per night

Kununurra's only 4.5 star self-contained deluxe accommodation, ideally located opposite the picturesque Lily Creek Lagoon, just 1km from the Kununurra town centre. The ideal base to refresh, and relax after a day exploring.

Property Features

Stunning pool with cascading waterfall, daybeds, decking, gas BBQs and lush tropical gardens. Complimentary airport and town transfers, Wi-Fi, Foxtel, laundry facilities and undercover parking.

Accommodation

Choose from self-contained 1, 2 and 3 bedroom apartments and studio apartments with kitchenettes. Two and 3 bedroom apartments also offer tropical outdoor rain shower as well as the convenience of an indoor bathroom.



Bungle Bungle Adventurer



Aviair

Operates: Daily
Duration: 2hrs
Departs: 6am, 9am or 2:30pm
Adult: \$495
Child: \$475 (3-12 yrs)

This popular scenic flight takes an exhilarating adventure over some of the most stunning and renowned sites in the Kimberley. Aviair aircraft are air-conditioned and comfortable, with large windows ideal for viewing the spectacular landscape below. Soar over the Ord River Irrigation Area, Lake Argyle, the Carr Boyd and Osmand Ranges. Experience spectacular aerial views of the Bungle Bungle Range in World Heritage listed Purnululu National Park, before flying over the Argyle Diamond Mine where rare pink diamonds were once mined.

Bungle Bungle Adventurer and Helicopter



Aviair

Operates: Mon, Wed, Fri, Sun (Apr to Oct)
Duration: 2.5hrs
Departs: 9am
Adult: \$994
Child: \$974 (3-12 yrs)

This tour provides the opportunity to explore the Bungle Bungle Range more intimately. A stunning scenic plane flight from Kununurra, soars over Lake Argyle, the Argyle Diamond Mine, Ord Irrigation Area and Carr Boyd and Osmand Ranges with stunning views of the Bungle Bungle Range. Reaching Purnululu National Park, touch down at the remote Bellburn Airstrip for a 30-minute helicopter flight taking you deeper into Purnululu National Park, for spectacular and up-close views of the famous beehive shaped domes.

Bungle Bungle Wanderer



Aviair

Operates: Daily (Apr to Sep)
Duration: Approx. 8hrs
Departs: 9am
Adult: \$949
Child: \$769 (3-12 yrs)

This scenic flight takes you on an unforgettable adventure over the Bungle Bungle Range, Lake Argyle, Ord Irrigation Area, Lake Kununurra, Carr Boyd Ranges, Osmand Ranges, the Ord River and the Bow River. Land at Purnululu National Park and take a 4WD to the start of your guided walk through the famous eroded towers and black and orange banded beehive shaped domes. Follow your guide into Cathedral Gorge, where towering cliffs open up to form a space with incredible natural acoustics. Enjoy a picnic lunch whilst relaxing in this beautiful spot, before returning to the airstrip for the scenic flight back to Kununurra.

Mitchell Falls Discoverer



Aviair

Operates: Thu and Sat (May to Aug)
Duration: Approx. 9hrs
Departs: 6am
Adult: \$1,779

Take a scenic plane flight over Wyndham and the Cambridge Gulf, view the beautifully patterned mud flats, King George Falls, and Kalumburu. At the remote Mitchell Plateau airstrip, guests will be met with helicopters to transfer them to the HeliSpirit base at the Mitchell Falls Campgrounds. For those guests who are fit and able to hike to the top of the Mitchell Falls, a guide will meet you at the campgrounds to commence your 4.5km. For those transferring to the top of the falls by helicopter, enjoy tea and coffee before taking to the skies to see the beauty of the region from above. Swim in the pools above the falls and enjoy a picnic lunch before a scenic helicopter flight back to the airstrip. The return flight is over El Questro and the Cockburn Range.

Waterfall Heli Adventure and Swim

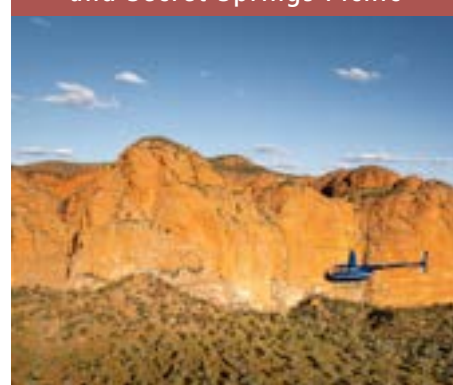


HeliSpirit

Operates: Daily
Duration: Approx. 2hrs
Departs: 7.30am, 10.30am, 1.30pm
Adult: \$649

This scenic flight aims to give you the best views of the waterfalls surrounding Kununurra. The flight path we follow on the day of your flight will vary depending on which waterfalls are at their best. Our experienced pilots will give you exciting views of the mountain ranges surrounding Kununurra, the huge Ord River, the surrounding tracts of irrigated farmland and the town of Kununurra. You will land at a remote waterfall and take a swim in your own private pool with no-one else in sight.

Bungle Bungle Helicopter and Secret Springs Picnic



HeliSpirit

Operates: Daily
Duration: 5hrs
Departs: 8am
Adult: \$3,599

Indulge in the ultimate experience of flying by helicopter from Kununurra with spectacular views of the famous Bungle Bungle domes. Land at Purnululu National Park, before flying to a secret spring nestled in the range. Take a short hike into an idyllic swimming hole where you can swim in absolute privacy and enjoy a picnic in one of the most beautiful settings imaginable. This tour option is available year-round with spectacular waterfalls after the rains in February and March.

KUNUNURRA DAY TOURS

Ord River Discoverer With Sunset



Triple J Tours

Operates: Daily (Apr to Oct)
Duration: 6hrs
Adult: \$242
Child: \$198 (3-15 yrs)

Join Triple J Tours for an exhilarating scenic 55km cruise with spectacular scenery, flora, fauna, informative commentary and maybe spot a crocodile or two! Includes a visit to the Argyle Downs Homestead Museum (Durack family home) and afternoon tea at a secluded riverside camp. The tour ends with a beautiful sunset on Lake Kununurra. (Please have lunch prior to departure).

Ord River Experience and Riverside Lunch



Triple J Tours

Operates: Daily (Jun to Oct)
Duration: 6.5hrs
Adult: \$242
Child: \$198 (3-15 yrs)

Traverse the full 55km stretch of Lake Kununurra (Diversion Dam) to the Ord Top Dam (Lake Argyle) on your fast boat cruise. Spectacular gorges, flora, fauna, informative commentary about all things Ord River Irrigation Area and maybe even spot a crocodile! Includes a buffet lunch at a riverside camp and a visit to the Argyle Homestead Museum (Durack family home).

Ord River Explorer with Sunset



Triple J Tours

Operates: Daily
Duration: 6hrs
Adult: \$242
Child: \$198 (3-15 yrs)

If you have already been to Lake Argyle, then this is the cruise for you! Cruising the 55km to Lake Argyle, you will marvel at the spectacular scenery, wildlife, flora, and fauna found along the way and maybe even spot a crocodile! At the base of the Ord Top Dam, you will cruise back towards Kununurra, stopping for afternoon tea at our riverside camp. Photographers will appreciate the contrast in colours as the light changes the way gorges and ranges look on the return journey.

We will return you to your Kununurra base after enjoying an East Kimberley sunset onboard the boat. (Please have lunch prior to departure).

Sunset Magic



Lake Argyle Cruises

Operates: Daily
Duration: 3.5hr
Adult: \$139
Child: \$99 (4-12 yrs)

On our popular Sunset Magic Cruise, we'll explore the rugged northern end of Lake Argyle while navigating through some of the lake's 90 islands and inlets. Our Skipper will entertain and inform with commentary on the local wildlife, natural history and development of Lake Argyle, and The Ord River Irrigation System.

Gourmet Camp Oven Experience ex Kununurra



Gourmet Camp Oven Experience

Operates: Daily except Tues (Apr to Sep)
Duration: 2hrs 45mins
Adult: \$199
Child: \$159 (4-12 yrs)

Soak in the ambiance of a Kimberley sunset as it transforms into a star-lit sky, the perfect outback setting for your 4 course gourmet camp oven dinner. All dishes are created with an emphasis on flavour and freshness using a combination of locally sourced produce and bush tucker.

A complimentary Matso's alcoholic ginger beer is served on arrival and live music is played throughout the main course. BYO eskys and drinks are welcome. Vegetarian and gluten free options are also available.

Lake Argyle Island Explorer Lunch Cruise



Lake Argyle Resort Cruises

Operates: Daily (Apr to Sep)
Duration: 3hrs 45mins
Departs: 10am
Adult: \$155
Child: \$92 (3-16 yrs)

Explore the rugged northern end of Lake Argyle with informative commentary on the natural history and development of Lake Argyle and the Ord River Irrigation System.

The lake is home to a wide range of wildlife including rock wallabies, crocodiles, wallaroos and prolific birdlife. A highlight is a stop on one of the many islands, for lunch and a swim in the clear waters of Australia's largest man-made lake. Transfers are available ex Kununurra (additional cost).

The Pilbara Map

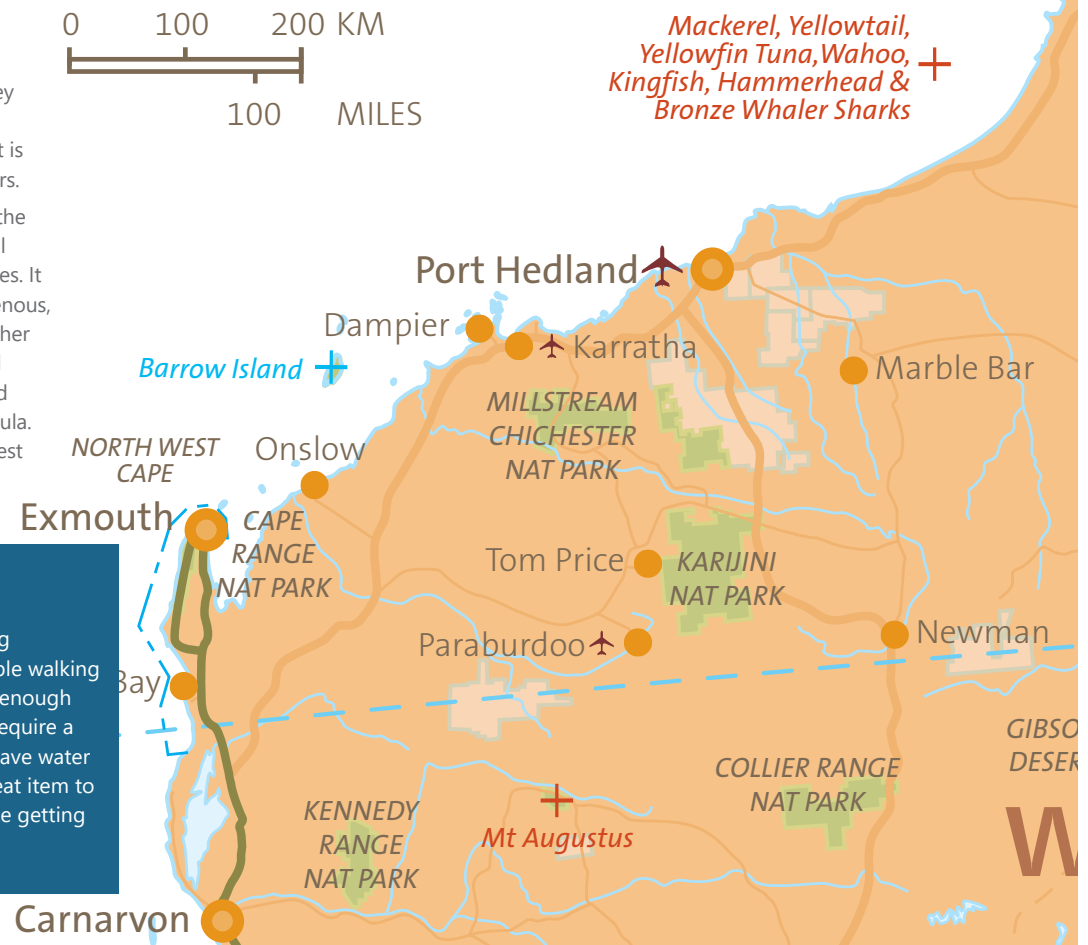
THE PILBARA

The Pilbara is home to the Hamersley Ranges that unfold over 400kms of this wild and spectacular region that is famous for its dramatic rock contours.

At the northern tip of the Pilbara is the town of Port Hedland where you will enjoy an interesting blend of lifestyles. It combines a unique history of Indigenous, pastoral and mining influences. Further south are the towns of Karratha and Dampier – home to the famous “Red Dog” and the ancient Burrup Peninsula. Here you can also visit the North West Shelf Visitor Centre.

TRAVEL TIP

The Pilbara offers plenty of hiking opportunities, so pack comfortable walking shoes and be sure to travel with enough water. Many of the hiking trails require a good level of fitness and some have water crossings, so reef shoes are a great item to bring on your trip if you don't like getting your socks wet!



KARIJINI NATIONAL PARK

Karijini National Park is one of the largest and most spectacular parks in Western Australia, famous for its sheer gorges, waterfalls and swimming holes.

This oasis in the rugged and remote outback is home to a variety of birds, red kangaroos and euros, rock wallabies, echidnas and many other fascinating species.

WEATHER

The winter months are the most popular time to visit the Pilbara. The region is characterised by very hot summers, mild winters and low and variable rainfall.

On the coast, nights are cool with fresh breezes, while inland the wind off the desert can see temperatures plummet to near freezing.

PORT HEDLAND

Marvel at the world's largest bulk export port, transporting exports of lithium, iron ore and salt. At this bustling Indian Ocean port, see huge ships and long trains being loaded for their journeys.

While industry is the focus here, Port Hedland is just as rich in Indigenous culture, pioneering history and wildlife. It's also a great spot for fishing, crabbing, watersports, whale watching and turtle nesting.



THE PILBARA ACCOMMODATION

Hospitality Port Hedland

1 Webster St, Port Hedland

From \$239 per room, per night

Overlooking the blue waters of the Indian Ocean, Hospitality Port Hedland is located just over 3km from the Port Hedland Centre, offering country hospitality with spacious, affordable and well-appointed rooms.

Property Features

Relax around the swimming pool and BBQ area to enjoy that casual meal, or spend the day exploring the local sights of Port Hedland and surrounding areas. Locally renowned Pilbara Room Restaurant and bar is open daily for breakfast, dinner and room service.

Accommodation

The comfortable, spacious and air-conditioned motel rooms offer guests a queen sized bed or queen and single beds, table and chairs, free Wi-Fi, Foxtel (including movies and all sports channels), tea and coffee making facilities, fridge, hairdryer, iron and ironing board.



Karratha International

Corner of Hillview and Millstream Roads, Karratha

From \$399 per room, per night

The Karratha International Hotel is the ideal stop off on your awe-inspiring North West adventure. The hotel is your gateway to the rocky landscapes of the Karijini National Park. Descend into ancient gorges, swim beneath plunging waterfalls and scale some of the oldest rocks in the world.

Property Features

The Karratha International Hotel offers a comfortable place to relax and revive after a day on the wide open road. The hotel has 80 rooms and suites in tropical poolside surrounds.

Accommodation

All rooms have recently been refurbished and have Wi-Fi access and modern facilities.



HeliSpirit

Burrup Peninsula and Angel Island Helicopter Flight



Ultimate Islands Flight



Operates: On demand

Duration: 30 minutes

Adult: \$499

On departure, orbit the city of Karratha before heading up the coast of the Burrup Peninsula. Fly past Hearson's Cove and onwards towards sea ripple passage. View the picturesque islands of the Dampier Peninsula, including Angel Island and Dolphin Island. The Burrup Peninsular is home to some of the oldest and most plentiful aboriginal rock art in Australia. Spot marine life along the way, with manta rays, turtles, and dugongs inhabiting the waters below. Flying down the western side of the Peninsula you will see the LNG and iron ore industries in full swing and then the main salt lakes before heading back to Karratha.

Operates: On demand

Duration: 45 minutes

Adult: \$699

Fly over a chain of 42 islands in the Dampier Archipelago set amongst the raw beauty of the rugged Pilbara landscape. It is not uncommon to witness an abundance of coastal wildlife such as turtles, manta rays, dugongs, dolphins, schools of fish, birdlife - you may even see a whale or two when in season! The return flight is over the Port of Dampier where ships of the iron ore and LNG industries are filled by the many trains connecting Karratha to the heart of the Pilbara.

Add a beach landing – additional \$100 per person

Touch down on a remote white sand island for a heli picnic. Enjoy 2 hours to relax on your own private beach or take a swim in the clear waters. Champagne and/or beer and an antipasto platter are included.

Karijini Eco Retreat

Off Weano Road, Karijini National Park

From \$270 per room, per night

Karijini Eco Retreat is one of Australia's leading eco-tourism attractions, situated in WA's second largest national park. Nestled at the edge of Joffre Gorge, stay under a sky chock-full of stars in safari style eco tents and dine at the outback restaurant. Spend your days fuelled by adventure, exploring breathtaking gorges and canyons, swimming under waterfalls, marvelling at colourful wildflowers and indulging in delicious food and wine. 100% Aboriginal-owned by Gumala Enterprises, proudly representing the Banjima, Yinhawangka and Nyiyaparli people of the Pilbara region.

Property Features

Restaurant and bar offering breakfast, lunch, dinner, picnic lunches and a takeaway burger bar. Kiosk, tour desk, Optus & Telstra mobile coverage.

Accommodation

A glamping experience designed for couples and families, choice of Deluxe Eco Tents, Deluxe Plus Eco Tents or Luxury Eco Tents. They include quality beds, linen, towels, ensuite bathroom with solar hot water showers, solar powered lights, in-room safe, front deck with table and chairs, large zip down windows and mesh screens.



Onslow Beach Resort

Cnr Second Ave and Third Street, Onslow

From \$260 per room, per night

Getaway on a coastal outback adventure to the Onslow Beach Resort, located between Exmouth and Karratha. Overlooking a unique red sand beach, stay in stylish self-contained apartments with ocean or pool views; dine or sip at the stunning Beach Club restaurant and bar right on the oceanfront, or book a sun-filled trip to the nearby Mackerel Islands.

Property Features

Outdoor swimming pool, barbecues, paddle board hire, tour desk, free Wi-Fi, free parking. Restaurant and bar open daily for breakfast, lunch and dinner. Nearby attractions - Beadon Bay Beach, Ashburton River, Historic Old Onslow Ruins, Goods Shed Museum, Shell Museum, Water Tanks Murals, Boardwalk, Ocean Sunrise & Sunset Lookouts, Staircase to the Moon Viewing Points, Anzac Memorial, Hidden Treasures Tour (seasonal).

Accommodation

Choice of Executive Suites, Pool View Suites, Ocean View Suites or Family Suites. Each features a fully-equipped kitchen, lounge and dining area, laundry, bathroom, private balcony or verandah. Plus free Wi-Fi, TV, hairdryer, air conditioning, ceiling fans, tea & coffee making facilities, daily housekeeping service.



Mackerel Islands

Thevenard Island, Onslow

From \$490 per room, per night

For a holiday full of adventure and relaxation, head to the Mackerel Islands, located north of Exmouth/Ningaloo. Home to a fringing reef, sandy beaches, secluded bays, gorgeous sunsets and wildlife encounters, just 45 minutes by ferry off the coast of Onslow, or 35 minutes from Exmouth on a scenic flight. Enjoy snorkelling with turtles and colourful tropical fish, spotting dolphins and rays, kayaking, SUP boarding, bird watching and beach fishing.

Property Features

Self-catered stay, experience Dinner Under The Stars twice a week. Small island general store, guest laundry, secure parking on mainland. Hire activities - island explorer boats, kayaks, paddle boards, bodyboards with reef viewing panels, snorkel sets, fishing rods, beach sports. Self-guided tours - island eco trail walk, turtle interaction, whale watching (in season), bird watching. Free guided tours - sunset 4WD bus tour, island sustainability tour, extra tours during school holidays.

Accommodation

Spacious, comfortable, air-conditioned cabins perched on the beach sand, each featuring a fully-equipped kitchen, lounge and dining areas with ocean views. King or twin beds, private bathroom, outdoor deck with BBQ and hammock.



THE CORAL COAST

Coral Coast Information and Map

A DREAM ROAD TRIP

Visit the magnificent Coral Coast, a natural playground home to many hidden treasures dotted along a fantastic stretch of coastline just waiting for you to explore. The Coral Coast region begins two hours drive north of Perth and runs for 1,100kms all the way north to Exmouth.

Some of Australia's best known holiday experiences are found on the Coral Coast, including the Pinnacles, Abrolhos Islands, Kalbarri National Park, the Shark Bay World Heritage Area (includes the dolphins of Monkey Mia and Dirk Hartog Island), the fresh produce of Carnarvon and the incredible Ningaloo Reef, where you can swim with the world's largest fish, the Whale shark.

Watch the turtles come ashore and lay their eggs during the summer, swim with the mighty Whale Sharks during March to August in the Ningaloo Marine Park, snorkel with the incredible Manta Rays in Coral Bay, get up close with the dolphins of Monkey Mia or marvel at the colourful wildflowers carpeting Kalbarri National Park and discover the mystical landscape of the Pinnacles along the Indian Ocean Drive.



TRAVEL TIP

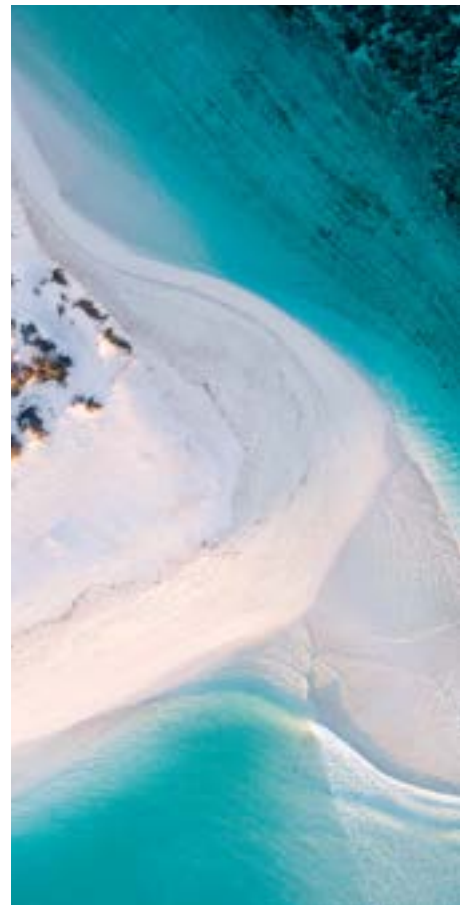
Plan the timing of your trip around what you'd like to see on your journey. Whale shark season is typically March - August, Humpback Whales June - October, Turtles hatch between February - April and Wildflower season is usually August-October, while Dolphin and Manta Rays can be spotted year-round.



NINGALOO REEF

A true bucket-list adventure is to swim with the gentle Whale sharks along the World Heritage Listed Ningaloo Reef. Dive into a world of colour and coral as you watch these majestic creatures glide past while you snorkel above.

We suggest to join a guided tour from Exmouth and spend a day on the boat, making your time in the region an unforgettable experience. Ask us about tours we recommend.



WEATHER

Western Australia's Coral Coast enjoys a warm climate all year round. The region enjoys a Mediterranean climate in the south and a sub-tropical climate in the north. Average daily temperatures in Celsius are below:

	DEC	MAR	JUN	SEP
Exmouth	37°C	33°C	25°C	32°C
Kalbarri	33°C	29°C	22°C	26°C
Jurien Bay	30°C	26°C	20°C	32°C

Mantarays Ningaloo Beach Resort Exmouth

Madaffari Drive, Exmouth

From \$370 per room, per night

The magnificent 4.5 star Mantarays Ningaloo Beach Resort provides a convenient and casual, yet stylish base, for guests to explore the World Heritage-listed Ningaloo Reef and Cape Range National Park. Metres from the waterline, the award winning resort is the only one on the beach at Ningaloo.

Property Features

The resort's Gold Plate Award winning Mantaray's restaurant and bar has indoor, outdoor and poolside dining. Guests when not feasting on fresh local seafood and seasonal produce can enjoy the swimming pools, gymnasium and private balconies, where at times they can watch whales frolicking in the Gulf.

Accommodation

Spacious, contemporary designed apartments have stunning interiors, spas and kitchen facilities and free Wi-Fi throughout the resort. The apartments' extensive balconies overlook the ocean, marina, canals or swimming pools.



RAC Exmouth Cape Holiday Park

Corner Murat Rd and Truscott Cres, Exmouth

From \$165 per room, per night

This recently redeveloped park is a short drive to Exmouth town centre and a 10-minute walk to the beach, making it the perfect place from which to explore Exmouth.

Property Features

Guests can enjoy the new resort style swimming pool with children's wading pool and accessible access. Keep the family entertained in the recreation room with TV's and table tennis or cook up a storm in the state-of-the-art camp kitchen with poolside BBQ's and outdoor dining. Enjoy new laundry facilities and amenities blocks including parents' room and accessible bathroom and wash down bay for your boat or car. Hire a snorkel from our friendly team and start exploring.

Accommodation

Choose to stay in self-contained poolside cabins, new studio rooms, refurbished motel rooms, budget family rooms, dorms, new ensuite sites or caravan and camping sites.



Exmouth Escape Resort

Corner Murat Road and Welch Street, Exmouth

From \$284 per room, per night

Exmouth's newest 4.5 Star, fully serviced resort complex is the perfect base to explore the unique World Heritage listed Ningaloo Reef and Cape Range National Park.

Property Features

Dine at our pool side, on-site restaurant voted the number 1 Seafood restaurant on TripAdvisor. Relax by our large, spacious pools ideally located amongst the lush tropical gardens. Exmouth Escape Resort is the only resort in Exmouth that provides guests with boat parking and wash down facilities.

Accommodation

The Resort has 17 self-contained Deluxe Three Bedroom Villas and 24 One and Two Bedroom Apartments. All room types are equipped with their own laundry facilities, kitchen, living and dining area, car park, Free Wi-Fi, Foxtel and private alfresco entertaining area with BBQ facilities.



Potshot Hotel Resort

Murat Road, Exmouth

From \$165 per room, per night

Centrally located is Exmouth's premier holiday accommodation. Come and relax at the Potshot Hotel Resort where we can cater for all your holiday needs. From hotel studios to apartments this is the perfect place to stay whilst exploring the area.

Property Features

Licensed restaurant and bar, swimming pools and BBQ facilities.

Accommodation

Choose between 3 bedroom Osprey Apartments, 2 bedroom Standard Apartments or Hotel/Resort Rooms.



CORAL COAST ACCOMMODATION

Sal Salis Ningaloo Reef

Ningaloo Reef

From \$1,790 per room, per night

Sal Salis Ningaloo Reef is an eco-luxury tented camp located in the World Heritage listed Cape Range National Park and overlooking the World Heritage listed Ningaloo Reef.

Property Features

There's camping, there's glamping and then there's Sal Salis. Offering so much more than just a room, Sal Salis is a digital detox and an opportunity to reconnect with nature. The spectacular landscapes and Australia's unique wildlife are the focus of your stay; and passionate, knowledgeable guides are on hand to host snorkelling, bush walking and kayaking expeditions. Sal Salis is the perfect place from which to swim with Whale Sharks (Mid-March to August) and with Humpback Whales (July to October), both at an extra cost. At night you'll find yourself mesmerised by the megawatt sparkle of the Milky Way.

Inclusions

Your stay at Sal Salis is inclusive of all meals and snacks, drinks from a select open bar, guided snorkelling, kayaking and walking excursions as well as use of all water sports gear from wet suits to stand-up-paddle-boards.

Accommodation

Accommodation is in 15 eco-luxury tents and 1 honeymoon tent, all are designed to blend with the dunes and each has a supremely comfortable bed and an en suite bathroom with eco-friendly loo and hot water shower. The social heart of the camp, including lounge, bar and library areas, is raised above the coastal scrub affording views of the reef and the breakers beyond. Delicious chef prepared meals are shared communally.



Deluxe Whaleshark Swim



Exmouth Dive and Whalesharks Ningaloo

Operates: Daily (Mar to Aug)

Departs: 7am

Duration: Full day

Adult: \$550

Child: \$410 (6-16yrs)

Join us for an adventure of a lifetime snorkelling with these gentle giants in the nutrient rich waters of the Ningaloo Reef. A highly experienced, professional and fun crew will ensure your interactions with the biggest fish in the sea are relaxed, safe, and most importantly, unforgettable. A videographer will take great video and photos of your day - yours free to keep. We offer a good swim guarantee and a 100% sighting guarantee. Snacks, delicious lunch and refreshments throughout the day. Transfers and quality equipment included.

Top of the Range Safari



Ningaloo Safari Tours

Operates: Daily (min numbers apply)

Departs: 9am

Duration: Full day

Adult: \$250

Child: \$190 (12yrs and under)

This unique, nature based experience is designed to showcase the areas natural beauty on an outback safari of the Cape Range National Park. It's a tour of remarkable diversity encompassing rugged canyon country, beautiful beaches, an exclusive Yardie Creek boat tour and snorkelling in Ningaloo Marine Park. See the rugged beauty of Charles Knife Gorge. Our expert guides will help you discover the unique flora and fauna of Cape Range National Park. Enjoy an exclusive tour of tranquil Yardie Creek on board Ningaloo Safaris Tours own purpose built vessel. Visit Milyering Discovery Centre and the panoramic Vlamingh Head Lighthouse.

Includes morning tea, lunch, snorkelling gear, Yardie Creek boat cruise, National Park fees

Coral Coast Cruising

from \$2,800 per person, twin share

Sail Ningaloo

Operates: Selected dates (Feb to Oct)

Departs: Coral Bay

4 Day / 3 Night Snorkel and Dive from \$2,800

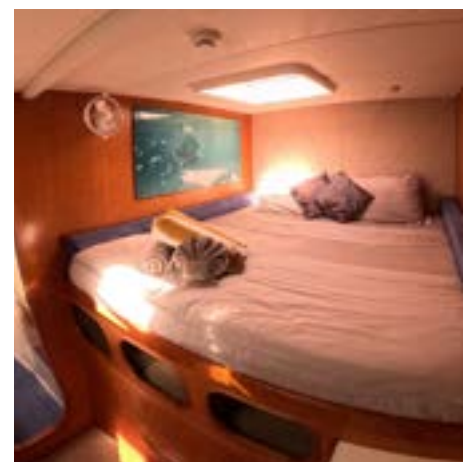
6 Day / 5 Night Ningaloo Escape from \$4,200

9 Day/ 8 Night Ultimate Ningaloo from \$7,000

Join an award-winning, small group eco-tourism experience, exploring the pristine Ningaloo Reef, over 4, 6 or 9 exhilarating days. Your accommodation is on board the luxurious 'Shore Thing', a 51ft sailing catamaran, spacious and comfortable at sea.

Snorkelling and scuba diving activities are our speciality; be immersed in the pristine coral gardens and wonder at an abundance of fish life, swim with turtles and Manta Rays, view inquisitive Dolphins, shy Dugongs and majestic Humpback Whales (seasonal). Take an on board kayak for a paddle, view incredible Indian Ocean sunsets and enjoy gourmet delights prepared fresh on board.

Prices are per person, double share and based on Deluxe cabins. Please contact us for departure dates and other cabin prices.



CORAL COAST ACCOMMODATION

Ningaloo Coral Bay

Robinson Street, Coral Bay

From \$235 per room, per night

Ningaloo Coral Bay has a range of self-contained accommodation at Bayview, including motel style rooms and Villas.

Property Features

Great location with views and convenient beach access. Boats and tour bookings. Swimming pool with children's paddling pool, tennis courts, jumping pillow, playgrounds and BBQ areas.

Accommodation

Choose from motel style or 1, 2 or 3 bedroom self-contained villas.



Heritage Resort Shark Bay

73-75 Knight Terrace, Denham

From \$199 per room, per night

The Heritage Resort is a 4 star waterfront property with 27 luxurious suites. If you're looking for a memorable holiday in a part of the world that can only be described as paradise on earth, then the waterfront Heritage Resort Shark Bay is waiting to welcome you. Our Shark Bay accommodation offers exceptional value to discerning travellers. All resort facilities, recreation and dining services are first class. As part of the World Heritage Listed Shark Bay area you can be assured of a warm welcome and personalised hospitality.

Property Features

The resort facilities include Bottleshop, Bar and Bistro serving local produce, a swimming pool plus disabled access facilities.

Accommodation

Range of Rooms available, from luxury ocean view rooms featuring balcony, Nespresso machine, minibar & Smart TV to economy rooms.



RAC Monkey Mia Dolphin Resort

Monkey Mia Road, Denham

From \$262 per room, per night

The RAC Monkey Mia Dolphin Resort is situated within the Shark Bay World Heritage Area and is home to one of the world's best-known dolphin encounters. Offering a unique holiday experience in unspoiled surrounds, there are a range of immersive activities to choose from such as sailing cruises, 4WD adventures and eco experiences. Unwind on the white sand beach next to crystal clear waters, or delight your tastebuds at our restaurant and bar the Boughshed Restaurant.

Property Features

Facilities include swimming pools, camp kitchen and general store. Activities for guests include beach volleyball, kayak and SUP hire, snorkelling and fishing. Enjoy a unique culinary experience at the Boughshed Restaurant, offering local fare from the surrounding areas just metres from the shores of Dolphin Beach, or enjoy casual dining under the palm trees at the Monkey Bar.

Accommodation

Choose from family self-contained units, hotel-style rooms, dormitories and both powered and unpowered campsites, some in absolute beachfront location.



Hospitality Carnarvon, SureStay Collection by Best Western

6 West Street, Carnarvon

From \$159 per room, per night

Carnarvon – a great place to base yourself whilst exploring the Ningaloo Reef and the Gascoyne Murchison Outback Pathway. Hospitality Carnarvon offers spacious, affordable and well-appointed motel rooms in a tranquil garden setting on the banks of the Gascoyne River.

Property Features

BBQ facilities, licensed restaurant, cocktail bar, outdoor swimming pool, free guest laundry, complimentary toiletries and tea/coffee making facilities. Free Wi-Fi and Foxtel in all rooms.

Accommodation

Our comfortable, spacious and air-conditioned motel rooms offer our guests a selection of queen and single, executive king or executive queen. Room service and continental breakfast is included.



Kalbarri Edge Resort

22 Porter Street, Kalbarri

From \$199 per room, per night

In the heart of Kalbarri, the jewel of Western Australia's Coral Coast, is the Kalbarri Edge Resort, Kalbarri's premier apartment style complex.

It's a great base to explore the picturesque coast, clear beaches and rugged gorges of the Kalbarri National Park, including the spectacular new Kalbarri Skywalk. Kalbarri is the perfect spot to see dolphins and whales, surf the breaks and fish all year round. The sunny climate makes this an ideal escape for any season.

Kalbarri Edge Resort is the ultimate place to unwind and relax after exploring the local sites. Lounge in your comfortable, smartly-appointed room, laze in the sun by the pool or partake in a giant game of chess. With a fully licensed restaurant and cocktail bar, there is something for everyone to make your stay comfortable.

Whether it's a family vacation, couples getaway, or single's escape, our friendly hospitality and relaxed atmosphere will ensure that you have an unforgettable stay.

Property Features

Outdoor heated pool, giant chess, licensed restaurant and bar, free guest parking, room service and outdoor BBQ facilities.

Accommodation

All rooms are air-conditioned, and guests can enjoy free Wi-Fi and Foxtel. The Deluxe Studio features a kitchenette with microwave, kettle and toaster. 1 or 2 Bedroom Executive Spa Suites provide a fully equipped kitchen, spa bath, laundry and outdoor deck with private BBQ.



Pinnacle Edge Resort

7 Aragon Street, Cervantes

From \$249 per room, per night

Located 20 minutes' walk from Lake Thetis and only a 20-minute drive from Jurien Bay or a 25 minute drive to Nambung National Park to explore the Pinnacles.

Property Features

Guests can enjoy use of the fitness center, swimming pool, on site restaurant and bar.

Accommodation

The air-conditioned apartments and studios feature either a kitchenette or fully equipped kitchen. All include a desk, a flat-screen TV and a DVD player.



Hospitality Geraldton, SureStay Collection by Best Western

169 Cathedral Avenue, Geraldton

From \$169 per room, per night

Ideally located in a quiet position, only minutes from the CBD, Hospitality Geraldton offers spacious, affordable and well appointed rooms and deluxe self contained apartments.

Property Features

BBQ facilities, licensed restaurant and cocktail bar, outdoor swimming pool, free guest laundry, complimentary toiletries, tea/coffee making facilities, mini bar and fridge. Air-conditioning, free parking, non-smoking rooms, room service. Free Wi-Fi and Foxtel in all rooms.

Accommodation

Our comfortable, spacious and air-conditioned motel rooms offer our guests a selection of king or queen plus single bedding. All rooms feature a table and chairs. Continental breakfast is included.



CORAL COAST ACCOMMODATION

The Gerald Apartment Hotel

25 Cathedral Avenue, Geraldton

From \$266 per room, per night

Located in the heart of gorgeous Geraldton, one of Western Australia's best kept secrets. A short, leisurely stroll to local eateries, shops, offices and the beautiful beach and Geraldton foreshore.

Property Features

Our luxury 40 room boutique hotel is also home to The Batavia Coast Conference Centre, perfect for events up to 400 people. As well as the Old Man and The Sea rooftop bar, boasting magnificent ocean views, and the luxurious Bob's Boutique Bar featuring an extensive cocktail list.

Accommodation

Tastefully designed to reflect our passion for guest enjoyment, each of our rooms exhibits a unique floor plan and incorporates hand selected artworks, crisp white sheets and fluffy pillows. Amenities include waterfall showers, large desks, super-fast Wi-Fi and mini bar.



Eco Abrolhos Cruises

The Houtman Abrolhos Islands National Park consists of 122 islands that are clustered into three main groups; the Wallabi, Pelsaert or Southern Group and Easter Groups. Located approximately 70 kilometres from the coastal town of Geraldton, the Abrolhos Islands can be reached via boat or plane.

Spend your days snorkelling, fishing, crayfishing, bird watching and exploring everything that this pristine marine archipelago has to offer. Your Abrolhos Island experience would not be complete without a visit to one of Australia's most infamous ship wrecks, The Batavia.

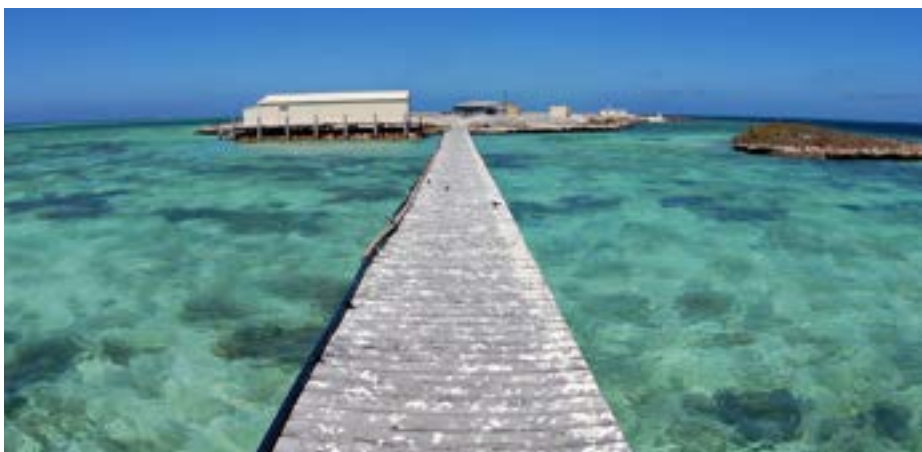
As the sun sets over the Indian Ocean, relax and unwind with a glass of wine on our top deck while you admire the views. Your palate will be treated with some of WA's freshest seafood prepared by our talented chef as well as a range of premium wines.

After a full day of sightseeing, relax in one of our air conditioned cabins complete with a private ensuite. Whether you want to get up close and personal with the marine life, explore the rich history or just relax in the sun – the experienced staff on board the Eco Abrolhos will make sure you have the trip of a lifetime. Speciality cruises available Shipwrecks and Wander Cruise, WA Wine Tasting and Seafood and Astro Tourism cruise. Ask our team for details!



Cruise	Ports	Departure Dates	Lower Deck Single Bunk Cabin		Middle Deck King Single Bunk Cabin	Queen / Double Bed Stateroom	King Bed Deluxe Stateroom
			Twin	Single	Twin	Double	Double
5 Night Abrolhos Islands	Geraldton Boat-out / Fly-in Fly-out / Boat in	2024: Selected dates from March to November.	\$3,510	\$3,950	\$3,730	\$4,170	\$4,710

Prices are per person, based on twin/double share, except above mentioned single occupancy (solo use) prices. Price includes meals, guided expeditions/excursions and transfers. The prices may vary for different tour types, e.g. boat/boat, boat/fly, fly/fly, Discovery or wine tasting and seafood.



Welcome to Perth

PERTH

As the capital of Western Australia, Perth is known for being sunny year round, with sprawling white sand beaches and a vibrant city centre by the Swan River.

Take in the city views from Kings Park and Botanical Gardens or ride around the Swan River, stopping to climb the Bell Tower or at a South Perth café to have an ice cream and admire the city skyline. Head to Northbridge or Leederville – cool inner-city suburbs with a vibrant small bar scene and plenty of great eateries.

You'll have your choice of beaches in Perth, the calm shores of Cottesloe, popular Scarborough or the rocky coves of Trigg, best for snorkelling and surfing. Join the locals on a Sunday afternoon at any of the seaside bars dotted along the coast.

Make sure you head to the Swan Valley to sample some wines. Only 30 minutes drive from the city or a short cruise up the Swan River, it's easy to find your new favourite drop.

Head down to the port city of Fremantle, rich in history and bustling with people at any time of the year. Visit the Fremantle Markets on the weekend to pick up some unique souvenirs and dine at one of the many cafés or restaurants.



WEATHER

Perth enjoys a warm Mediterranean climate and offers fine and sunny weather for most of the year. Even during the winter, the sun is often shining.

Springtime begins in September, when the weather quickly warms before leading into a typically hot summer - starting in December with an average daily temperature of 31°C. Autumn offers warm days and cooler nights and while the winter months are short, June to August has the highest rainfall.

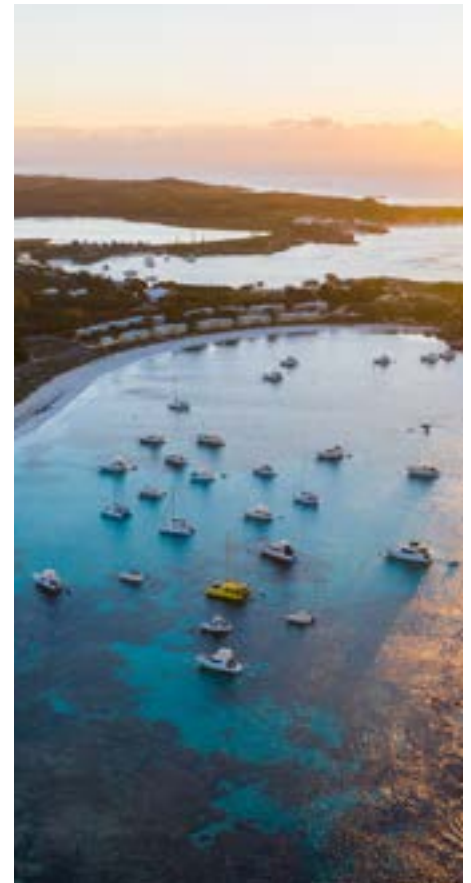
ROTTNEST ISLAND

Perth's favourite island playground is only a short ferry ride away from the mainland (departing Fremantle or Hillarys Boat Harbour).

With so much to see and do, you can easily fill a full day on the island or opt to stay a while and really give yourself time to explore. Hire a bike and snorkel equipment to explore the many pristine beaches, secluded coves and bays, join a boat tour of the island or just kick back and embrace the relaxed pace. Be sure to get a photo with one of the friendly local Quokkas before you leave!

Perth City Map

- 1 Airport Apartments by Vetroblu
- 5 COMO the Treasury
- 2 Quality Hotel Ambassador Perth
- 6 Duxton Hotel Perth
- 3 Rendezvous Hotel Perth Central
- 7 Adina Perth Barrack Plaza
- 4 Oaks Perth
- 8 Crown Metropolis and Crown Towers Perth



PERTH ACCOMMODATION

Airport Apartments By Vetroblu

100 Coolgardie Avenue, Redcliffe

From \$220 per room, per night

Located just minutes from Perth Domestic and International airports, business districts and shopping outlets. A free 24 hour shuttle service is offered to get to and from all Perth Airport terminals.

Property Facilities

Airport Apartments offers unlimited Wi-Fi, local telephone calls, all hours shuttle (to both airports), undercover parking, newspaper, and 24-hour reception.

Accommodation

One and two bedroom apartments offer spacious, separate bedrooms (each with their own ensuite), full sized kitchen and fridge, separate dining and lounge areas, cook top, oven, dishwasher, microwave, complete with cooking utensils and crockery. Each apartment has a washing machine and dryer, with complimentary amenities supplied. All apartments have a balcony or courtyard. Wheelchair accessible apartments available.



Quality Hotel Ambassador Perth

196 Adelaide Terrace, Perth

From \$179 per room, per night

Enjoy a great value stay at the Quality Hotel Ambassador Perth, conveniently located a short stroll from the Swan River and minutes to the City's exciting choice of shopping, dining, entertainment and nightlife areas.

Property Features

There is a restaurant, lobby shop and 24-hour reception, with on-site car parking available at great rates.

Accommodation

All rooms feature free Wi-Fi internet access, iron and ironing board, hairdryer, mini-fridge and tea and coffee making facilities.



Rendezvous Hotel Perth Central

24 Mount Street, Perth

From \$200 per room, per night

Located in the CBD less than 10 minutes from major attractions including Kings Park, Perth Convention and Exhibition Centre, Perth Arena, city shopping on Hay Street and Murray Street Mall, the new Elizabeth Quay and Yagan Square precinct. Rendezvous is the perfect base for your Perth city stay.

Property Features

There is a restaurant, bar, gym and sauna, 24 hour reception plus on-site parking (small cars only).

Accommodation

103 spacious guest rooms featuring unlimited free Wi-Fi internet.



Oaks Perth

305 Murray Street, Perth

From \$226 per room, per night

Nestled in the bustling urban landscape of Perth, Oaks Perth Hotel is situated 12km from Perth airport, with everything you could possibly need on your doorstep. Within walking distance is Murray Street Mall, multiple restaurants, Perth train station and for those wanting to explore a little further, the jetty to access the world-famous Rottnest Island.

Property Features

Oaks Perth Hotel boasts the Oak & Vine restaurant where guests can enjoy a delicious start to your day with a continental or full buffet breakfast served fresh each morning or a relaxed dinner offering modern Australian cuisine.

Accommodation

From spacious studios with a queen bed, kitchenette and workspace to deluxe studios perfect for both business and leisure travellers alike.



COMO The Treasury

1 Cathedral Ave, Perth

From \$995 per room, per night
 COMO The Treasury is an elegant, award-winning urban hotel located in the revitalised historic heart of Perth, Australia. The hotel is housed in the 19th-century State Buildings, which formerly served as a post office, Treasury and land and titles offices. Meticulous restoration has revealed a grand Victorian-era façade, while inside a contemporary style permeates the 48 rooms and suites. The State Buildings also feature restaurants, bars and a hand-picked retail collective, offering bespoke, quality products.

Property Features

Facilities include a 20 metre indoor pool, a gym and steam room. Dining options include the rooftop Wildflower restaurant, serving a menu revolving around the indigenous six seasons, and Post, an all-day osteria serving Italian classics. There's also the Cape Arid Rooms, an elegant space for COMO The Treasury's celebrated afternoon tea. Wellbeing is nurtured at COMO Shambhala Urban Escape, with a range of Western and Eastern therapies and wellness traditions.

Accommodation

Accommodation is large, with rooms ranging from 55sqm to 120sqm. Each room functions as a serene retreat from the cosmopolitan buzz, evoking the feeling of a 'home away from home'.



Duxton Hotel Perth

1 St Georges Terrace, Perth

From \$252 per room, per night
 Located in the heart of the Perth CBD, the 5 star Duxton Hotel offers guests superior accommodation rooms and is only a few minutes' walk away from major shopping, entertainment and restaurant centres.

Property Features

Award winning Firewater Grille Restaurant, bar, function facilities, 24-hour room service, fitness centre, outdoor pool, valet parking, free Wi-Fi in all guest rooms and public areas.

Accommodation

There are 306 spacious guest rooms and suites with all the amenities you would expect to find at a 5 star hotel.



Adina Perth Barrack Plaza

138 Barrack Street, Perth

From \$240 per room, per night
 Conveniently located in the heart of Perth, the Adina Apartment Hotel Perth Barrack Plaza is central to explore all Perth has to offer. This contemporary apartment hotel is minutes from the Murray Street Mall, Barrack Street Ferry, Yagan Square and only a short drive to the stunning Kings Park.

Property Features

The hotel features a pool and sauna, onsite parking and a fitness center.

Accommodation

Offering a choice of 100 generous and contemporary studio apartments, or one and two-bedroom apartments with balconies, kitchenette with microwave, fridge, utensils, mini bar, tea/coffee making facilities and Wi-Fi.



PERTH & SURROUNDS ACCOMMODATION

Crown Metropol

Great Eastern Highway, Perth

From \$295 per room, per night

The ultimate in modern accommodation, Crown Metropol Perth promises to deliver a truly unique hotel experience. Guest rooms are a mix of clean classic lines with chic gloss black detailing and has everything you need from a roomy bed, comfy sofa and a large desk for work or play.

Guests can choose from a range of world-renowned restaurants and bars including Nobu and Bistro Guillaume. For an experience that redefines contemporary accommodation, Crown Metropol Perth has it all.

Property Features

Surrounded by glamorous day beds and lounges, Poolside features a large lagoon pool, relaxation pool and a family friendly pool complete with children's waterslides.

Accommodation

Guest rooms have everything you need from a comfortable bed, sofa and a large desk for work or play. The marble bathrooms have a tub, walk in shower and premium amenities. All guest rooms are non-smoking and offer Wi-Fi.



Crown Towers Perth

Great Eastern Highway, Perth

From \$436 per room, per night

The epitome of luxury, guest rooms and suites at Crown Towers Perth command magnificent views. Intelligently designed with the latest technology and showcasing the renowned Crown Towers service, guests have the opportunity to experience a hotel property unlike any other in Western Australia.

Property Features

Featuring expansive lagoon pools, private cabanas, poolside or premium dining, luxurious spa treatments and boutique shopping.

Accommodation

This is the Forbes Travel Guide's only Western Australian 5-Star property. Be immersed in the feeling of unimagined luxury and spaciousness. Guest rooms are styled in peaceful neutral tones accented with the highest quality furnishings and amenities. All rooms and suites are non-smoking and offer the latest touch screen technology, 24 hour guest service and access to the resort pools and gymnasium.



Rydges by Esplanade Fremantle

46-54 Marine Terrace, Fremantle

From \$250 per room, per night

Located just 20 minutes from Perth CBD and 30 minutes from Perth domestic and international airports. This iconic location means guests can savour the culture and tradition of Fremantle, one of WA's premier tourist destinations. The hotel site has been established since 1850 and the hotel pays tribute to the rich history of our building, whilst incorporating references to Fremantle as an iconic port city.

Property Features

Featuring two restaurants, bar, swimming pool and gym.

Accommodation

All rooms feature modern ensuite with complimentary personal amenities, 50-inch ULTRA HD LCD television with Streamcast, 24 hour room service and mini bar, High-speed Wi-Fi and broadband internet.



Be. Fremantle

43 Mews Road, Fremantle

From \$276 per room, per night (minimum 2 night stay)

Situated on the absolute waterfront in Fremantle, Be. Fremantle offers a range of spacious, well-appointed one, two and three bedroom apartments with spectacular harbour, marina and ocean views.

Property Features

Enjoy the direct access to the Fishing Boat Harbour Precinct, and only a short stroll to Bathers Beach, township and the Rottneet Ferry. Featuring outdoor BBQ areas, Be.Bike hire, car parking and 24 hour reception. Fremantle has a vibrant social scene with an abundance of great restaurants, bars, micro-breweries, family entertainment and more. Choose a Harbour View apartment overlooking Fishing Boat Harbour. Wake to the sounds of water lapping upon the harbour wall and enjoy the beautiful sunrise over Fremantle. Alternatively take a Marina View apartment and enjoy an amazing sunset directly from your balcony.

Accommodation

All apartments include spacious living areas, reverse cycle air-conditioning, private balconies, Nespresso machine, free premium Wi-Fi, Foxtel TV, in room laundry facilities and complimentary Appelles products. Many apartment types also feature well-appointed kitchens and sun decks.



Seashells Scarborough

178 The Esplanade, Scarborough

From \$305 per room, per night (minimum 2 night stay)

Situated directly opposite Scarborough Beach, Seashells offers 2 and 3 bedroom fully self-contained apartments. With just a short stroll to a number of restaurants, cafés, bars and shops, your holiday starts the minute you arrive.

Property Features

The property has two outdoor swimming pools – one heated, BBQ's and free undercover parking.

Accommodation

All the apartments include kitchen and laundry facilities, spacious lounge and dining area, private balcony, free Wi-Fi access and weekly housekeeping service.



Rendezvous Scarborough

148 The Esplanade, Scarborough

From \$171 per room, per night

Rendezvous Hotel Perth Scarborough is an iconic beachfront hotel overlooking the soft white sands of Scarborough Beach and the sparkling blue water of the Indian Ocean, just a 30-minute drive from Perth Airport and only 15 minutes from Perth's CBD.

Property Features

Dynamic facilities including a lagoon style pool with ocean views, tennis courts, a fully equipped games room, modern conference spaces, restaurant and bar.

Accommodation

Rooms are a contemporary style, whilst exuding charm, bespoke furnishings and modern amenities including hairdryer, tea/coffee making facilities, individual climate control, TV, Radio and Cable TV and mini bar.



Seashells Mandurah

16 Dolphin Drive, Mandurah

From \$229 per room, per night

Situated absolute beachfront at Comet Bay, Seashells Mandurah offers a range of luxury one and two bedroom fully self-contained apartments and villas with breathtaking ocean or marina views.

Property Features

Enjoy the outdoor heated swimming pool stretching along the beachfront, BBQ facilities, tennis court and free onsite car parking.

Accommodation

All apartments include kitchen and laundry facilities, spacious lounge and dining areas, private balconies, jetted bath, free Wi-Fi, free in-house movies on demand, reverse cycle air-conditioning and a weekly housekeeping service.



PERTH DAY TOURS

Half Day Perth & Fremantle City Explorer + Swan River Cruise



Australian Pinnacle Tours

Operates: Fri, Sat, Sun (Apr - Oct) and Daily (Nov - Mar)

Duration: Half day - 6hrs

Adult: \$129

Child: \$80 (4-12yrs)

The perfect introduction to allow you to get your bearings around Western Australia's beautiful capital city. Twinned with sampling the Port of Perth - Fremantle; this taster tour will showcase Perth at its best.

Includes:

- Select hotel pick-up
- One way Swan River cruise

Keep an eye out for dolphins in the Swan River.

Pinnacles Desert Sunset and Night-time Stargazing



Australian Pinnacle Tours

Operates: Mon, Wed, Thu, Fri, Sun

Duration: Full day - 8hrs

Adult: \$215

Child: \$120 (4-12yrs)

Head north to Yanchep National Park for a quick stop. Continue up the coast towards the magical Pinnacle Desert to view the mystical limestone rock formations. Arriving late afternoon allows for breathtaking sunsets. Experience the moon-like landscape come to life as the sun sets over the Indian Ocean. Once darkness falls, we head to the fishing town of Cervantes for our included dinner in a traditional WA tavern. Return to the Pinnacles to the observation deck to experience the tranquillity of the national park and view the night sky without light pollution.

Includes: Select hotel pick-up and return drop-off, entrance fees and dinner.

Wave Rock, York & Aboriginal Culture



Australian Pinnacle Tours

Operates: Tue, Wed, Fri, Sun

Duration: Full day - 12.5hrs

Adult: \$245

Child: \$138 (4-12yrs)

Journey through the Wheatbelt region to visit the historic township of York and Wave Rock, and experience Aboriginal culture in outback WA. We stop for an Aussie country style lunch at the Wildflower Shop. Whilst here, visit either a Wildlife Park or view the unique Antique Lace Collection. We then move on to see the spectacular prehistoric rock formation, Wave Rock. Leaving Wave Rock, visit Mulka's Cave and Hippo's Yawn before a return to Perth via a remote country town for afternoon tea (own expense).

Includes:

- Aussie style country lunch
- Entrance fees
- Select hotel pick-up and return drop-off

Pinnacles, Koalas and Sandboarding 4WD Adventure



Australian Pinnacle Tours

Operates: Daily

Duration: Full day - 13.5hrs

Adult: \$245

Child: \$138 (4-12yrs)

A full day visiting the Pinnacles, meeting koalas and sandboarding. After stopping at Caversham Wildlife Park to view koalas and hand feed kangaroos, enjoy a thrilling experience of sandboarding and 4-wheel driving over the vast sand dunes of Lancelin. Travel to the lobster fishing town of Cervantes for lunch and a self-guided tour to learn about the lobster industry. Then onwards to the mystical Pinnacle Desert for an easy paced walk around the fascinating landscape. Includes lunch, select hotel pick-up and return drop-off, 4WD experience and sandboard hire in Lancelin.

Margaret River, Busselton Jetty and Cape Leeuwin Lighthouse



Australian Pinnacle Tours

Operates: Mon, Tue, Thu, Fri, Sat

Duration: Full day

Adult: \$245

Child: \$138

Travel south to Busselton, stop at the iconic Busselton Jetty, the longest timber jetty in the southern hemisphere. Enjoy lunch, followed by beer and wine tastings at one of Margaret River's boutique breweries. Next stop Mammoth Cave for a guided tour. Continuing south, through the Boranup Forest of enormous Karri Trees, we reach Augusta. Here at Cape Leeuwin Lighthouse, marvel at the dividing point between the Southern and Indian oceans. Lastly, a brief stop in Margaret River before heading back to Perth. Includes select hotel pick-up and return drop-off.

Swan Valley Gourmet Wine Cruise



Captain Cook Cruises

Operates: Wed, Fri-Sun (Nov-Mar) Fri-Sun (Apr-Oct)

Duration: 7hrs

Adult: \$235

Upon arrival, enjoy a short walk through the grounds, leading to a behind the scenes cinematic tour of Sandalford Estate. Following this, indulge in a grazing table lunch in the winery and a private seated wine tasting! Wrap up your time at Sandalford with a visit to the cellar door and gift shop to browse the full selection of wine and gifts available for purchase. On the return, a delicious selection of desserts and all-inclusive wines are waiting for you on board accompanied by live entertainment as you cruise the beautiful upper reaches of the Swan River back to Perth.

Perth Arcades & Laneways Tour



Two Feet and a Heartbeat

Operates: Daily at 2pm **Duration:** 2.5hrs
Adult: \$70 **Child:** \$50 (6-12yrs)

Embark on an immersive journey through the heart of Perth's vibrant city. Uncover the city's rich history and captivating stories as you traverse pedestrian-friendly malls, exquisite arcades, stylish laneways, and hidden alleyways. Commencing at the historic Perth Town Hall, the tour delves into the lanes and arcades that crisscross the city, revealing the tales, personalities, and iconic sites that define Perth's character. Discover key landmarks, including The State Buildings, London Court, and Wolf Lane, as your knowledgeable guide shares captivating narratives. No detail is overlooked during this comprehensive exploration!

Conclude the tour by unwinding at a local bar, where your first drink is complimentary - a perfect conclusion to a delightful afternoon in Perth.

Segway Tours Perth, Kings Park and Rottnest Island



Segway Tours WA

From \$89 per person- for a Rottnest Island Settlement Explorer or a Perth Riverside Tour

Cruise around some of the most beautiful landscapes in Western Australia on one of the most incredible modern machines in the world. Our knowledgeable guides will thrill you with fascinating stories about our rich history, dynamic boom times and grand plans for the future as you glide effortlessly on your own Segway. See the picturesque Swan River Foreshore and historic Perth city streets, discover beautiful Kings Park and the Botanic Gardens and explore idyllic Rottnest Island. Segways are easy to ride for all ages, and you'll be amazed how much fun you'll have.

Segway Tours WA are winners of many Western Australian and Australian tourism awards, and winner of TripAdvisor Certificate of Excellence for the past 5 years, which puts us in the Hall of Fame.

HALO Rooftop Walking Tour at Optus Stadium



The OZONE at Optus Stadium

Operates: Tuesday-Sunday **Duration:** 1.5hrs
Adult: \$99
Child (8-17yrs): \$60

This rooftop tour gives you behind-the-scenes access, a unique perspective of Perth and a bird's eye view from the top of Optus Stadium. From Level 5, you'll access the roof via a staircase to the famous sails. It's easy as walking up a flight of stairs. Safe and secure, the 360-degree walk will give you access to insider knowledge on game day operations and how the stadium was constructed on beautiful Whadjuk Noongar Country.

Included in the HALO rooftop tour is the new western viewing deck, giving you even better views of the Derbarl Yerrigan (Swan River) and unique views of Perth City from the stadium's highest vantage point. Take a few moments to absorb the view and pose for your unique city skyline photo

SeaLink Rottnest Bike & Ferry Package



SeaLink Rottnest Island

Operates: Daily
Departs: From Fremantle or Perth City
Adult: \$154

Discover Rottnest Island by bicycle and experience over 63 beaches and 20 bays as you explore this unique A-Class Reserve. Book SeaLink's Bike & Ferry Package which includes return ferry transfers from either Fremantle or Perth and a full-day of bicycle hire. Cycling is environmentally friendly and a fun recreational activity for all ages. As Rottnest Island has essentially no cars, cycling is one of the best ways to get around the Island.

Rottnest Fast Ferries Grand Island Explorer (from Hillarys)



Rottnest Fast Ferries

Operates: Daily
Departs: 10am
Adult: \$180 | **Child:** \$109 (4-12yrs)

Enjoy a lightning fast 40-minute ocean crossing to and from Rottnest Island in air-conditioned comfort on board a high-speed ferry. Rottnest Island is an A-Class reserve with stunning coral reefs and crystal-clear waters. Meet the Quokkas, these adorable animals are world renowned as the happiest animal on Earth. Take in all Rottnest's must-see locations including the Wadjemup Lighthouse, Henrietta Rocks and Mabel Cove. Experience a 'behind-the-scenes' tour of the Oliver Hill Guns and Tunnel Fortification.

Rottnest Fast Ferries Explorer Hop on Hop off (from Hillarys)



Rottnest Fast Ferries

Operates: Daily
Departs: 10am
Adult: \$119 | **Child:** \$67 (4-12yrs)

Enjoy a quick ferry crossing to and from Rottnest Island in air-conditioned comfort. Rottnest Island is an A-Class reserve with stunning coral reefs and crystal-clear waters. Meet the Quokkas - the happiest animal on Earth. Upgrade your island experience and enjoy the beauty of Rottnest at your own pace with the hop-on hop-off 'Island Explorer' shuttle bus. This flexible way to explore allows you to hop on and off at any of the 19 stops around the island throughout the day. *Please note: The Island Explorer is not a tour, there is no commentary. During peak periods, the bus may be full and passengers may have to wait for the next bus.

ROTTNEST ISLAND ACCOMMODATION

Discovery Resorts - Rottnest Island

Strue Rd, Rottnest Island

From \$299 per room, per night

Nestled behind the dunes of the iconic Pinky Beach, one of the most relaxed and breathtaking coastal locations in Australia sits Discovery Resorts – Rottnest Island. A holiday (almost) under the stars awaits with a stay in one of our luxury glamping-style tents. Spend your days exploring boardwalks through the sand dunes to Pinky's Rottnest Island and laze by the resort pool. With sweeping views across The Basin, and the city just visible on the horizon, you'll feel a world away from the hustle and bustle.

Property Features

On the beach side of the property is Pinky's Rottnest Island restaurant and bar. It's the best place on the Island to watch the sunset, meet friends, and enjoy locally inspired dishes and cocktails. Other features include a guest swimming pool, poolside bar, direct beach access from the property, free Wi-Fi and guest BBQs. Boardwalks and pathways between our tents help to keep the landscape undisturbed.

Accommodation

Featuring 83 tents, the property is set in one of the most picturesque locations on the Island – Pinky Beach. Our standard tent option includes a private ensuite and outdoor deck, with our superior tents including even more space and a kitchenette, while our deluxe tents feature a walk-in robe and double vanity ensuite. All stays include full buffet breakfast daily at Pinky's Restaurant.



Samphire Rottnest

Corner Parker Point Road and McCallum Avenue, Rottnest

From \$324 per room, per night

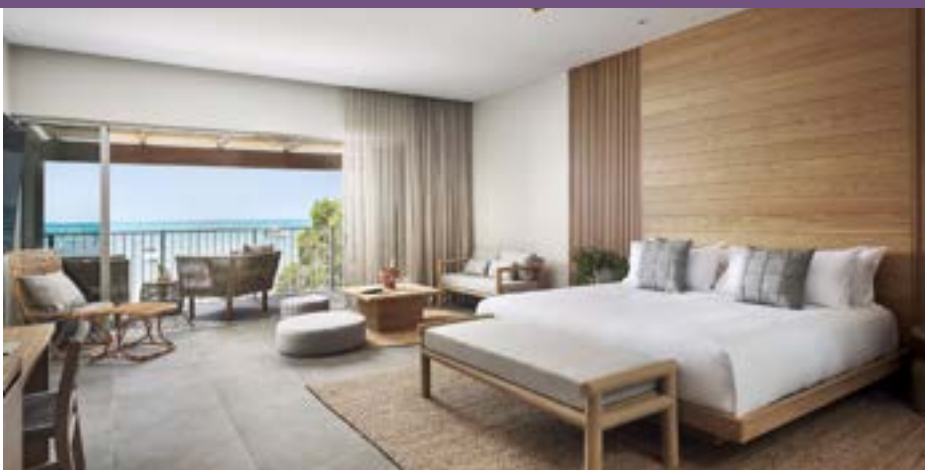
Situated in a sublime coastal setting on Rottnest Island, Samphire Rottnest will leave you spellbound. From couples, families and singles, this location allows you to choose your own adventure, whether that is exploring the island and the 63 beaches by bike or relaxing poolside. Food lovers can indulge in the signature restaurant Lontara, or walk next door to Hotel Rottnest for a relaxed beachside experience. A short stroll away you will find Isola Bar e Cibo, a touch of Italy on the island.

Property Features

Lontara restaurant, Bayside Bar for beachfront cocktails and the Beach Club sunset drinks. Enjoy an in-room massage, two lagoon-style pools, bike hire, or beach gear hire right at your fingertips.

Accommodation

A choice between Signature Beachfront, Beachfront, Poolside or Beach Lane rooms. There are also interconnecting rooms with two double beds for families, available on request. All rooms are beautifully decorated, inviting the relaxed coastal vibe inside.



Experience Rottnest with Bike and Snorkel Hire



Rottnest Express

Operates: Daily
Duration: Full day
Departs: Perth

Adult: \$118 **Child:** \$61 (4-12yrs)

Relax and explore the beauty of Rottnest as you cycle around the Island at your own pace. Book a bike before you travel and it will be waiting for you at the jetty when you arrive. Feel free to explore the entire island including the many secluded bays and beaches.

Your package includes Rottnest Island admission fees, hotel transfers from most Perth metropolitan hotels however bookings are essential, same day return transfers to Rottnest, bicycle hire with a helmet, snorkel hire and a commented Swan River Cruise for those departing Perth.

Discover Rottnest



Rottnest Express

Operates: Daily
Duration: Full day
Departs: Perth

Adult: \$138 **Child:** \$70 (4-12yrs)

Escape from the city on a 30-minute cruise from Perth via Fremantle to the relaxed atmosphere of Rottnest Island. Explore the beauty and tranquillity of Rottnest on an enjoyable 90-minute Island Discovery Bus Tour visiting many of the Islands attractions. See spectacular beaches and bays, learn the history of the island and see unique wildlife including the iconic Quokkas!

Your package includes Rottnest Island admission fees, hotel transfers from most Perth metropolitan hotels however bookings are essential, same day return transfers to Rottnest, 90-minute Island Discovery Bus Tour and a commented Swan River Cruise for those departing Perth.

Adventure Rottnest



Rottnest Express

Operates: Daily
Duration: Full day
Departs: Perth

Adult: \$204 **Child:** \$119 (4-12yrs)

The Eco Express completes a full 90-minute circumnavigation of Rottnest Island (weather dependent), giving passengers an unforgettable up-close encounter with the island's wild side. Look forward to a visit to the New Zealand fur seals at Cathedral Rocks and the chance to spy majestic humpback whales, which migrate through Rottnest's waters between September and November. It's the ultimate thrill ride for nature lovers, with expert commentary along the way. Your package includes Rottnest Island admission fees, Swan River cruise with commentary and a 90-minute adventure ride on the Eco Express.

Rottnest Island Flights



Swan River Seaplanes

Duration: 20 minute one-way flight

Departs: Perth to Rottnest by Seaplane departs 9am and 10am and Rottnest to Perth by Seaplane departs 9.30am and 2pm

Seaplane: One-way from **Adult:** \$195 | **Child:** \$145 (2-12yrs)

Fly direct from the Swan River in Perth CBD to Rottnest Island with Swan River Seaplanes. With scheduled flights available daily you will reach Rottnest Island in record time with incredible views of Perth City, Kings Park and Botanical Gardens, the picturesque coastline and of course Rottnest Island! Choose one of our packaged tours, or create your own Rottnest Island experience by selecting a range of on-ground activities. Includes: CBD Hotel transfers

Rottnest Island Flight and Long Lunch



Swan River Seaplanes

Duration: 6hrs

Departs: 9.45am

Adult: \$470 | **Child:** \$410 (2-12yrs)

Experience the ultimate luxury beach escape with our exclusive package that includes return seaplane flights to Rottnest Island and a long gourmet lunch at Lontara. Upon arrival, take some free time to explore the island before heading to Lontara to indulge in the chef's selection lunch. As you arrive, you will be greeted with a welcome cocktail and a glass of beer, wine or soft drink to accompany your meal. With the stunning beachside location and delicious food, this package promises to be a memorable experience. Includes return seaplane flights, set menu lunch at Lontara with cocktail on arrival. Includes CBD hotel transfers in Perth.

Skydive on Rottnest



Skydive Geronimo

Operates: All year round (weather permitting)

Adult: From \$339 (10,000ft)

From \$467 (15,000ft)

Located just 19kms off the coast of Fremantle, Rottnest Island has been described as Perth's island paradise. Skydive Geronimo Rottnest is Australia's premier skydive experience, offering tandem skydives from up to 15,000ft over this iconic West Australian holiday island destination. Our most popular experience is the 14,000ft Rottnest Island Tandem Skydive. You'll enjoy a 60 second free fall time - total duration of this skydive is 2 hours approx. Skydive with us and you won't just have the best experience, you'll get the best memories of it to keep forever! Video packages are extra.

THE SOUTH WEST & GREAT SOUTHERN

Discover the Scenic South West and Great Southern

THE MARGARET RIVER REGION

A leisurely drive from Perth, The South West is a highlight for nature lovers and foodies alike. Be sure to set aside several days to explore the wineries, breweries, galleries and boutique food producers of the region.

Start your adventure in Busselton, a vibrant seaside town known for being home to the Southern Hemisphere's longest timber Jetty, stretching 2km out into the Indian Ocean. This is also a great place to spot the occasional pod of Dolphins close to shore.

The friendly township of Dunsborough and the nearby community of Yallingup welcome you to explore their bustling cafes, pubs and pristine white-sand beaches.

Margaret River is famous for world-class surf breaks but even more so for its wineries. Book a wine tour where you can sample the best of the local cellar doors and craft breweries, or instead opt to spend your time exploring hidden beaches and meandering through tall-timber forests. A must-do while in the area is to visit Boranup Forest and explore the network of natural limestone caves dotted along Caves Road.



DENMARK & ALBANY

On the south coast you will find long stretches of pristine beaches and tall-timber forests. Head to Walpole to explore the towering Valley of the Giants, where you can meander high along the Tree Top Walk taking in the incredible views.

The Great Southern region boasts stunning swimming spots – Greens Pool in Denmark is a firm favourite. From Denmark to Albany and all the way to Bremer Bay, there are plenty of hidden bays which you can make your private beach for the day. Albany is central to Australia's ANZAC history, visit the National ANZAC Centre to learn more about this port town.



Abbey Beach Resort

595 Bussell Hwy, Broadwater, Busselton

From \$224 per room, per night

As the largest resort in the southwest of Western Australia, Abbey Beach Resort is the perfect Busselton accommodation to relax and unwind. Boasting full resort facilities, including serviced apartments, and a range of accommodation options to suit all types of travellers.

Property Features

An outstanding array of facilities including three swimming pools (the indoor pool is heated), two restaurants, three bars, a sauna, gym, tennis courts, children's playground, squash court and direct beach access.

Accommodation

Abbey Beach Resort offers a selection of accommodation styles from studios with kitchenette to 1, 2 or 3 bedroom apartments featuring fully-equipped kitchens.



Cape Lodge

3341 Caves Road, Yallingup

From \$765 per room, per night

Located in the heart of the Margaret River wine region offering luxury accommodation, Cape Lodge is surrounded by its own vineyard and is likened to staying at a private country estate, yet with all the trappings and facilities of a world-class private boutique hotel. Cape Lodge attracts those who are seeking a private, stylish and sophisticated retreat, and those with a yearning to discover outstanding food and wine.

Property Features

Set amongst 40 acres of manicured gardens, the property features the superb Cape Lodge Restaurant and includes a swimming pool, ornamental lakes and vineyard.

Accommodation

The Lodge features 22 luxurious rooms with garden or lake views and a magnificent 4 bedroom Private Residence.



Margarets In Town Apartments

6 Tunbridge Street, Margaret River

From \$210 per room, per night

Margarets In Town Apartments is situated in the heart of Margaret River, adjacent to beautiful forests with walk and bike trails right on your doorstep. Short stroll to shops, galleries, markets and restaurants. Only 10 minutes from pristine Margaret River beaches and wineries abundant.

Property Features

Free Wi-Fi, free parking, swimming pool, tennis court, Foxtel, conference facilities, onsite bar

Accommodation

Choose from accommodation, standard room or fully self-contained 1 bedroom apartments and 2 bedroom apartments plus 3 bedroom townhouse.



Stay Margaret River

78 Wallcliffe Road, Margaret River

From \$209 per room, per night

Stay Margaret River is the ideal comfortable accommodation option for those wanting to relax, unwind and enjoy the idyllic surrounds of the spectacular region of Margaret River.

Property Features

Willow Grill Restaurant, swimming pool, 9 hole miniature golf, Bocce, children's playground, outdoor games and barbecue facilities.

Accommodation

Choose from a range of accommodation including our well appointed Queen rooms through to King rooms or 2 bedroom apartments. All Stay Margaret river rooms have stunning views of the hotel grounds and gardens with top of the range facilities to make your stay more memorable. Rooms are serviced daily.



SOUTH WEST ACCOMMODATION

Margarets Beach Resort

1 Resort Place, Gnarabup Beach, Margaret River

From \$221 per room, per night

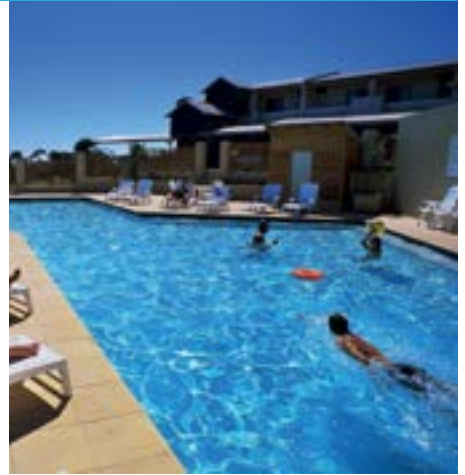
Margarets Beach Resort is one of the best beach resorts in Western Australia and the only one by the ocean in Gnarabup, just 10 minutes drive from Margaret River town. With fully self-contained 4 star accommodation, it's the perfect location for a romantic getaway or memorable family holiday.

Property Features

Only 500m from pristine Gnarabup Beach. free Wi-Fi, swimming pool, sauna, children's playground, BBQs "The Common" onsite restaurant.

Accommodation

Choose between studio, 1 or 2 bedroom apartments and townhouses, some with spa and 4 bedroom beach houses. All units have either kitchenette or full kitchen, laundry facilities, reverse cycle air conditioning and free Wi-Fi.



Pullman Bunker Bay Resort

42 Bunker Bay Road, Naturaliste

From \$461 per room, per night

Enchanting Pullman Bunker Bay Resort is an idyllic 5-star retreat, 3 hours south of Perth, in the heart of Western Australia's picturesque, world renowned Margaret River wine region. This luxurious oasis is nestled on the pure white sands and azure waters of tranquil Bunker Bay. The resort spans 35 acres of beautifully landscaped native gardens, bordered by the Cape Naturalist National Park.

Property Features

The resort offers 24-hour reception, concierge and room service, complimentary Wi-Fi, heated infinity edge swimming pool, tennis court, gymnasium and BBQ picnic area. Overlooking the bay is Other side of the Moon Restaurant which presents a distinctly "Modern Australian" menu. The resort's award-winning health and rejuvenation day spa, Vie Spa, offers luxe treatments that echo the relaxed feel of its secluded location.

Accommodation

With 150 luxuriously appointed studio, 1, 2 and 3 bedroom villas in contemporary Australian style.



Seashells Yallingup

Yallingup Beach Road, Yallingup

From \$239 per room, per night

Seashells Yallingup is set within beautiful heritage gardens, with Yallingup Beach just a 10-minute stroll away down a pretty walk trail. It is an easy 3 hour drive south of Perth.

Property Features

Soak in the surrounds with barbecue facilities and walking trails. It is a 2 minute drive to popular Ngilgi Cave, and award-winning restaurants are a short distance away. Next door, Caves House Hotel provides casual dining, bar facilities, a beer garden and live entertainment. Seashells also has a tour desk and offers complimentary onsite car parking.

Accommodation

Seashells Yallingup is equipped to deliver a lush South West escape. Choose from 1 and 2 bedroom spacious self-contained apartments furnished with art-deco touches, with spa baths in most and balconies or decks overlooking the extensive gardens. Each apartment features a well-appointed kitchen and laundry, lounge and dining area, air-conditioning, coffee machine, free in-house movies and Wi-Fi.



Smiths Beach Resort

Smiths Beach Road, Yallingup, Margaret River Region

From \$469 per room, per night

Experience the ultimate beachside escape at Smiths Beach Resort, Small Luxury Hotel of the World™. Ideally situated in the heart of Western Australia's Margaret River Region.

Property Features

Infinity solar heated swimming pool, tennis court and Lamont's Deli and Restaurant offering breakfast and dinner. Perfect for couples and families looking to relax and explore the region. The resort is located on the Cape to Cape track.

Accommodation

Choose from 1, 2, 3 and 4 bedroom apartments, villas or beach houses, upgrade to a room with stunning ocean views. Your private home within a resort, offering large spaces, high speed in-room free WiFi, fully self-contained accommodation with private parking alongside your front door.



3 Day Margaret River Escape



McLeod Tours

Operates: Sun and Wed
Duration: 3 Days

Adult: \$1,325 **Child:** \$900 (6-16yrs)

Explore the region's hidden gems on this tour, departing twice weekly on Sundays and Wednesday. Take in Margaret River's stunning scenery and attractions including wineries and galleries, local produce, forests, cave and lighthouse – with the knowledge of dedicated local expert tour guides.

Includes:

- Two nights 4 star accommodation
- Small group tours: 2-16 guests
- 2 breakfasts, 3 lunches
- Cave and Lighthouse Tours
- Entrance fees and tasting fees

Taste of the Bays Cruise



South West Cruises

Duration: 4 hours approx.
Departs: Jan - Apr, 2.45pm from Quindalup, WA
Adult: From \$319

Step on board for an indulgent foodie experience showcasing flavours and scenery of the Margaret River region. 'Taste of the Bays' is an all-inclusive progressive dinner, floating on a 60-ft pleasure boat on calm, blue waters of Geographe Bay. The tour blends the region's breathtaking views and sunset with its exquisite seafood, fresh produce and fine wines, all in one deluxe experience.

The cruise travels from Dunsborough to Bunker Bay, with a 7-course feast served along the way. Crafted by a private chef on deck, courses are accompanied by premium wines, local boutique beers and non-alcoholic choices. Anchored in a pristine bay, you can swim, snorkel or unwind on board taking in magical views. Package includes courtesy coach transfers.

Full Day Wine Tour



Harvest Tours

Operates: Daily
Departs: Margaret River region
Duration: Full day

Adult: \$182 **Child:** \$138 (6-12yrs)

Everyone needs to relax and unwind sometimes, and an idyllic day trip from Margaret River is a great way to do so. Here at Harvest Tours, we offer Margaret River tours that are luxurious and exciting, while remaining affordable. We believe in taking you to the places that we, as locals, choose to visit ourselves, so that you can engage with passionate and inspiring local business owners and indulge in the delights Margaret River has to offer.

Includes:

- 2 course winery lunch
- All entrances and wine tasting
- All transport

Premium Full Day Wine Tour



Harvest Tours

Operates: Daily
Duration: Full day

Adult: \$345 | **Child:** \$198 (6-12 years)

Enjoy a luxurious wine tour of Margaret River, Australia's premier wine region. Sample some of the finest wines from the internationally recognised wineries, and learn about the history and culture of the area. Visit local vineyards, take in stunning views, and enjoy a delicious lunch.

Includes: Three-course lunch and 2 glasses of wine at Vasse Felix, all wine tastings, free-range meat & cheese tasting at McHenry Hohnen, charcuterie board and masterclass at West Winds Gin, free sample bag of coffee with our Eco-friendly shopping bag.

Backroads Trail Half Day Tour



Forage Safaris

Operates: Tue to Sun ex Busselton or Margaret River
Duration: Half & Full day tours available

Adult: \$210 | **Child:** \$110 (2-11 years)

Explore the backroads of the Margaret River region on a carefully crafted, all-inclusive food, farm and wine tour. Meet the farmers and producers through authentic encounters, which can include farm walks, wine tastings, enticing picnics and food tastings. A selection of tour options is tailored to suit personal interests and will change with the seasons. With a maximum of seven passengers on each tour, departures are from either Busselton or Margaret River.

Beach & Forest Eco Adventure



Pemberton Discovery Tours

Operates: Daily ex Pemberton
Duration: 4hrs

Adult: \$150 | **Child:** \$75 (3-15 years)

Join us on board our comfortable 4WD to discover this remarkable wilderness in this corner of the South West as we travel through the old growth forest in the Warren National Park and the Yeagarup Dunes in the D'Entrecasteaux National Park to the mouth of the Warren River and the great Southern Ocean.

This Advanced Ecotourism Certified Tour offers you an interpretive eco-adventure through four completely diverse landscapes, including spectacular wildflowers (seasonal). A great addition to your south west adventure.

SOUTH WEST & GREAT SOUTHERN ACCOMMODATION

RAC Karri Valley Resort

11342 Vasse Highway, Beedelup, Pemberton

From \$215 per room, per night (min 2 night stay)

Positioned on the edge of Lake Beedelup, and beneath majestic Karri Valley Forest, the recently refurbished resort provides the perfect setting to relax. Whether it's a family holiday, romantic escape, or a social getaway with friends, we have a range of accommodation to suit all.

Property Features

Enjoy canoeing, swimming, trout fishing, mini golf, bush walking, BMX track, tennis court, general store and lakeside BBQs. The onsite Lakeside Restaurant offers breathtaking views of Lake Beedelup and a tantalising menu showcasing the best local southern forest produce.

Accommodation

Choose from Lakeside rooms with private balconies set over the lake or self-contained 2 or 3 bedroom chalets with private balcony, kitchen, lounge, dining and log fire.



The Beach House at Bayside

33 Barry Court, Bayside Links, Albany

From \$345 per room, per night

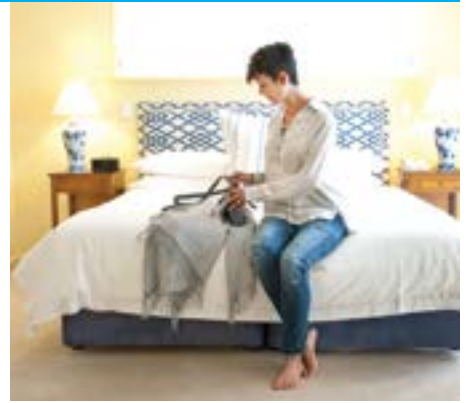
The Beach House at Bayside offers award winning, 5-star hosted accommodation in beautiful and historic Albany, Western Australia. Located 100m beyond the dunes on the 5km long Middleton Bay. Minutes away from the historic Albany town centre, magnificent southern coastline and tranquil rural landscapes.

Property Features

Only 100m from Middleton Beach with cycling and walking paths just minutes away. Guests enjoy Afternoon Tea, evening port and chocolates and free Wi-Fi during your stay.

Accommodation

Choose from a range of room styles, all are luxurious and spacious. Rooms feature reverse cycle air-conditioning, plush bedding, tea and coffee making facilities and daily servicing.



Hilton Garden Inn Albany

3 Toll Place, Albany

From \$223 per room, per night

Overlooking the waterfront, our hotel is between Albany Entertainment Centre and Albany Light Opera and Theatre Company. We are surrounded by beautiful views from Apex Lookout, Middleton Beach, and the National Anzac Centre, all within five kilometers. Albany historic sites, farmer's market, and train station are all less than a kilometer away.

Property Features

You will have all the comforts of home here with free parking, free Wi-Fi, all non-smoking rooms, digital key, on-site restaurant and bar, and fitness centre, plus a 24 hour grab and go outlet.

Accommodation

Choose a King or Twin Room with or without ocean views. Mini refrigerator, 250 thread count sheets for that unbelievable sleep, 55 inch HDTV, hairdryer, iron and ironing board and Peter Thomas Roth® bath amenities.



Dog Rock Motel

303 Middleton Road, Albany

From \$199 per room, per night

The Dog Rock Motel is centrally located in the heart of Albany. Freshly renovated rooms and friendly service, the Dog Rock offers 5 levels of accommodation suitable for a lavish special occasion or as a base for a budget conscious tour of the south coast.

Property Features

Dine at the award winning Lime 303 Restaurant, free Wi-Fi and parking.

Accommodation

Room service, complimentary in-house movies, tea and coffee facilities, remote television, ensuite, refrigerator, hair dryer, in-house guest laundry, view of city lights at night from deluxe rooms and convenient parking at your door.



Hospitality Esperance, SureStay Collection by Best Western

44-46 The Esplanade, Esperance

From \$159 per room, per night

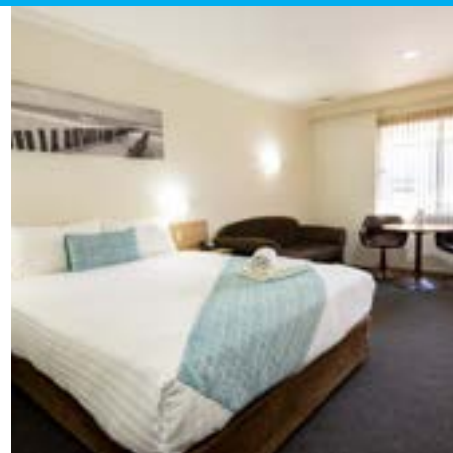
Ideally located opposite Esperance Bay, within the heart of the town and walking distance to the shops, cafés and cruises.

Property Features

Guest BBQ area, large swimming pool, free guest laundry, a-la-carte restaurant with room service, cocktail bar and a playground is adjacent.

Accommodation

Spacious, air-conditioned and well-appointed motel rooms offering queen, queen and single, executive queen and executive king room configuration, dining table, desk and ensuite, free Wi-Fi and Foxtel. Continental breakfast is included.



Comfort Inn Bay of Isles

32 The Esplanade, Esperance

From \$189 per room, per night

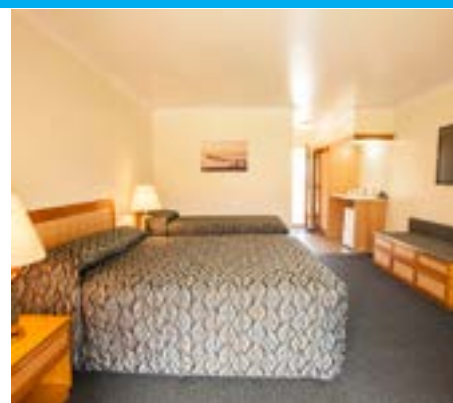
Comfort Inn Bay of Isles is situated on the Esplanade waterfront. This property is a short walk from the vibrant town centre and the perfect base to explore the region.

Property Features

Facilities include a swimming pool and free car parking. The onsite bar and restaurant opens daily and free Wi-Fi is available throughout.

Accommodation

There are 62 rooms each with ensuite, air-conditioning, tea and coffee making facilities, mini-bar, telephone, in-room safe, 50 inch TV with 20 Foxtel channels.



Tasting Delicious Denmark



Busy Blue Bus

Operates: Thu, Fri, Sat

Duration: 6hrs

Adult: \$199 | **Child:** \$180 (2-15 years)

This is more than just a food and wine tour!

Take in the cathedral of towering karri trees as you travel through lush bushland to hidden venues in Denmark. Taste handcrafted cheese and award-winning wines, mead, ice cream and chocolate. Relax at lunch in a picturesque boutique winery. Hear passionate stories and explore the flavours of the region.

Esperance Highlights Scenic Flight



HeliSpirit

Operates: Nov - Apr (on demand)

Duration: 15 minutes

Adult: \$249

As you take off from the iconic waterfront helipad, you will immediately appreciate the spectacular views of the coastal town of Esperance. The flight will orbit over Esperance taking in Woody Lake, Windabout Lakes, Lake Warden and Pink Lake. As you fly back towards the coast you will see the pristine waters of the Southern Ocean and Recherche Archipelago before returning to the Esperance foreshore.

Ultimate Coastal Scenic Flight with Beach Landing



HeliSpirit

Operates: Nov - Apr (on demand)

Duration: 2 hrs (1 hour flight)

Adult: \$999

Discover one of the most stunning remote beaches along the Esperance coastline. Fly over Esperance Bay then track east towards the famous Cape Le Grand National Park and Frenchman Peak until you reach Hammer Head, where your pilot will land on the pristine, sandy white beach. Enjoy a gourmet picnic, take a dip in the crystal-clear water and soak up the tranquility of the secluded beach. Return flight along the coast with spectacular views of Lucky Bay, Thistle Bay and Hellfire Bay. As you track west, fly back past Mount Le Grand, Recherche Archipelago then onto Observatory Island, Twilight Bay and Blue Haven before returning to the Esperance Bay helipad.

CALENDAR AND SCHOOL HOLIDAYS

School Holiday Dates

	Western Australia	Northern Territory	South Australia
2024	29 Mar - 14 Apr	6 Apr - 14 Apr	13 Apr - 28 Apr
	29 Jun - 14 Jul	22 Jun - 15 Jul	6 Jul - 21 Jul
	21 Sep - 6 Oct	21 Sep - 6 Oct	28 Sep - 13 Oct
	13 Dec - 4 Feb 2025	14 Dec - 28 Jan 2025	14 Dec - 27 Jan 2025
2025	12 Apr - 27 Apr	5 Apr - 13 Apr	12 Apr - 27 Apr
	5 Jul - 20 Jul	21 Jun - 14 Jul	5 Jul - 20 Jul
	27 Sep - 12 Oct	20 Sep - 5 Oct	27 Sep - 12 Oct
	19 Dec - 1 Feb 2026	13 Dec - 27 Jan 2026	13 Dec - TBA

2024-2025 Calendar

MARCH 2024							APRIL 2024							MAY 2024							JUNE 2024						
M	T	W	T	F	S	S	M	T	W	T	F	S	S	M	T	W	T	F	S	S	M	T	W	T	F	S	S
				1	2	3	1	2	3	4	5	6	7			1	2	3	4	5						1	2
4	5	6	7	8	9	10	8	9	10	11	12	13	14	6	7	8	9	10	11	12	3	4	5	6	7	8	9
11	12	13	14	15	16	17	15	16	17	18	19	20	21	13	14	15	16	17	18	19	10	11	12	13	14	15	16
18	19	20	21	22	23	24	22	23	24	25	26	27	28	20	21	22	23	24	25	26	17	18	19	20	21	22	23
25	26	27	28	29	30	31	29	30						27	28	29	30	31			24	25	26	27	28	29	30
JULY 2024							AUGUST 2024							SEPTEMBER 2024							OCTOBER 2024						
M	T	W	T	F	S	S	M	T	W	T	F	S	S	M	T	W	T	F	S	S	M	T	W	T	F	S	S
1	2	3	4	5	6	7				1	2	3	4						1	1	2	3	4	5	6		
8	9	10	11	12	13	14	5	6	7	8	9	10	11	2	3	4	5	6	7	8	7	8	9	10	11	12	13
15	16	17	18	19	20	21	12	13	14	15	16	17	18	9	10	11	12	13	14	15	14	15	16	17	18	19	20
22	23	24	25	26	27	28	19	20	21	22	23	24	25	16	17	18	19	20	21	22	21	22	23	24	25	26	27
29	30	31					26	27	28	29	30	31		23	24	25	26	27	28	29	28	29	30	31			
														30													
NOVEMBER 2024							DECEMBER 2024							JANUARY 2025							FEBRUARY 2025						
M	T	W	T	F	S	S	M	T	W	T	F	S	S	M	T	W	T	F	S	S	M	T	W	T	F	S	S
				1	2	3							1			1	2	3	4	5						1	2
4	5	6	7	8	9	10	2	3	4	5	6	7	8	6	7	8	9	10	11	12	3	4	5	6	7	8	9
11	12	13	14	15	16	17	9	10	11	12	13	14	15	13	14	15	16	17	18	19	10	11	12	13	14	15	16
18	19	20	21	22	23	24	16	17	18	19	20	21	22	20	21	22	23	24	25	26	17	18	19	20	21	22	23
25	26	27	28	29	30		23	24	25	26	27	28	29	27	28	29	30	31			24	25	26	27	28		
							30	31																			
MARCH 2025							APRIL 2025							MAY 2025							JUNE 2025						
M	T	W	T	F	S	S	M	T	W	T	F	S	S	M	T	W	T	F	S	S	M	T	W	T	F	S	S
				1	2		1	2	3	4	5	6			1	2	3	4						1			
3	4	5	6	7	8	9	7	8	9	10	11	12	13	5	6	7	8	9	10	11	2	3	4	5	6	7	8
10	11	12	13	14	15	16	14	15	16	17	18	19	20	12	13	14	15	16	17	18	9	10	11	12	13	14	15
17	18	19	20	21	22	23	21	22	23	24	25	26	27	19	20	21	22	23	24	25	16	17	18	19	20	21	22
24	25	26	27	28	29	30	28	29	30					26	27	28	29	30	31	23	24	25	26	27	28	29	
31																					30						

BKB Holidays Terms & Conditions

BKB Holidays specialise in selling Western Australia, South Australia, Northern Territory, Cocos Keeling Islands, Christmas Island, Bali, Singapore and Vietnam. With over 25 years of expert knowledge, BKB Holidays give you the security of knowing all itineraries are professionally organised, ensuring visitors will experience the best your chosen destination can offer.

HOW TO BOOK

Contact your preferred Travel Agent or call 1300 357 057 or email bookings@bkbholidays.com. Travel Agent Priority Line (08) 6382 2166.

Late Bookings

Bookings made within 45 days of travel, or inside supplier cancellation fee periods, may require a credit card guarantee before requests for confirmations can proceed. Bookings for travel within 14 days will incur a late booking fee.

PRICES & PAYMENTS

All prices are quoted in Australian dollars (AUD\$) and are subject to change without notification. The advertised prices were calculated based on low season validity between 1 April 2024 to 31 March 2025. Prices are based on the lead-in room category, as a guide only. All prices are land only and do not include airfares. All prices are subject to availability, change, withdrawal or variation without notice.

Pricing Surcharge

Some suppliers may place a surcharge during special events, school holidays and long weekends throughout the year, please check prior to booking.

Deposit

A non-refundable, non-transferable deposit of \$110.00 per person is required within 7 days of making your booking. Some bookings may require additional third party deposits. Where full payment is received immediately, a deposit of \$110.00 per adult is deemed to be a portion of the full payment. A deposit acts to hold the services requested but does not guarantee prices.

Final Payment

Final payment must be made no later than 60 days prior to departure. Third party bookings may require final payment earlier than 60 days to avoid automatic cancellation. Payments are not transferable to another party. Third Party charges may apply to the reservation and will need to be paid direct to the supplier. Please advise payment by due date to avoid your booking being cancelled.

FEES

Amendments

A fee of \$55.00 per amendment per file, will be charged once deposits have been received. A fee of \$110.00 per amendment per booking will be charged once final payment has been received. Changes may also incur a fee from the tour operator, carrier or principals with which your booking is held and will be charged accordingly.

Cancellations

If you cancel or terminate your holiday we will charge a cancellation fee:
Prior to Final Payment - There will be no refund of your deposit (\$110.00 per person) or any additional supplier deposit that may have been collected.
After Final Payment - 100% cancellation applies however refunds will be assessed at the discretion of BKB Holidays and our suppliers taking into consideration supplier fees.

Credit Card Fees

Payments can be made with credit cards. Fees will apply. Please check with our consultant or your travel agent at time of payment.

TRAVEL REQUIREMENTS

Minimum Numbers

Some tour operators require minimum numbers to confirm a tour. As such, some bookings may be waitlisted until these minimum requirements have been reached. If a tour is not confirmed for this reason, a full refund will be issued. BKB Holidays cannot accept responsibility for 3rd party suppliers cancelling itineraries due to minimum numbers not being filled.

International Travel

Passports (with at least six months validity) and visas are the responsibility of the individual traveller. We recommend visiting the Smart Traveller website for the latest travel advice issued by the Australian Government - www.smarttraveller.gov.au.

Travel Insurance

We strongly recommend travel insurance, which can cover many potential losses including, loss of deposit and cancellation fees. Ask a BKB Holidays reservations consultant for a recommendation of policies to suit your needs.

Hotel Bond

Some hotels may require a bond on check-in to cover incidentals not included in your holiday package. A credit card for pre-authorisation is preferred, alternatively a cash bond payment is available in some circumstances.

Travel Documentation

All tickets and vouchers will be issued on receipt of final payment being made to BKB Holidays approximately 4 weeks prior to travel

Identification

Photo identification is required upon check in for travel arrangements. Names are to be spelt as per passport, change fees will apply if names are incorrect on travel documentation.

Hire Vehicles Age Limit

25 years is the minimum but some companies make special allowance for drivers 21 years and over. Provisional licences are not accepted. All hire rates in this brochure include collision damage insurance. A non-waived damage excess applies to all vehicles. A bond for petrol and insurance excess is payable to the company at the time of collection of your vehicle. This bond is fully refundable, less petrol, when the vehicle is returned in an undamaged condition. Bonds are usually taken in the form of a credit card deposit or pre-authorisation of a credit card however other forms of payment may be accepted, each individual car hire company varies as to what they will accept. Insurance is completely void for normal sedans if driven on unsealed roads. All distances, driving times, and maps shown in this brochure are designed as a guide only. Additional charges will be levied direct to Car Hire Operator. Please refer to Terms and Conditions provided to you at time of booking. Additional charges such as one-way fees and Premium Location Surcharges may apply and will be in addition to the daily rate. Please check with your travel agent or our reservations team before booking.

Transfers

Some accommodation suppliers provide courtesy transfers from airports/ railway stations. It is essential that these transfers are pre-booked. Some Tour Suppliers provide complimentary pick up and return drop off to your holiday accommodation. All tours and transfers must be re-confirmed with the supplier at least 24 hours prior to departure directly with the service provider.

CONCERNS

Where a situation arises during travel, it is imperative that you inform the Supplier immediately in order for the Supplier to rectify the situation as quickly and effectively as possible. If you do not do so it may hinder the ability of the Supplier to resolve your concerns and to ensure your holiday is exactly to your liking. If booking issues require the assistance of BKB Holidays to be resolved, we request that all complaints are forwarded to our Reservations Manager in writing, immediately on your return.

RESPONSIBILITY

Information featured on our website and in our brochures has been supplied by the people and organisations (Suppliers) providing the various goods and/ or services (Products). In supplying this information to you, we are acting as the agent of such Suppliers. We take all measures to ensure that the information featured in our brochures and on our website are accurate at the time of publication, however, we do not control the manner in which Products featured are provided. We disclaim and will be exempt from liability for anything to do with the supply of such Products. This includes liability (whether as a matter of contract, tort, statute, restitution, or otherwise) for any direct, indirect or consequential loss, liability, claim, cost, expense, proceeding, demand, penalty, disappointment, death, injury, illness, shock, inconvenience or delay. This limitation of liability also applies irrespective of the cause, including negligence of us or a Supplier, withdrawal, cancellation or failure to provide a Product, delay, any variation in the Product, the provision of substitute Products or a change in the Supplier. Without limitation, we will not be responsible if the Product is not available due to inclement weather conditions or other Acts of God, civil disturbances, fire, floods, acts of Government or any other authorities, accident to or failure of machinery or equipment or industrial action. BKB Holidays cannot accept any responsibility for any operator changing or withdrawing prices, details or services shown, all are subject to alteration without notice. BKB Holidays is a wholesaler and in the provision of holidays acts solely as an agent on behalf of the principals. These principals are all land and transport suppliers including the range of hotels, car companies and boat companies used in the holidays by the client. BKB Holidays is not a principal and acts solely as an agent between the principal and the third party (client) it is not responsible for monies paid in advance to the principal by BKB Holidays on behalf of the third party (client) if the principal is unable to provide that service either by default, insolvency, liquidation, change of ownership or operation difficulties.

BROCHURE INFORMATION

Maps & Photographs

Images displayed in the brochure and on the website are included as a guide only. Hotel room photographs are representative only and actual rooms occupied may vary in decor and inclusions from those shown.

Copyright

All material contained on our website and within our brochure publications is copyright. Reproduction in whole or part is not permitted without the written permission of BKB Holidays.

The above booking conditions can change without notice. For up to date booking conditions please refer to www.bkbholidays.com/terms-conditions

BKB Holidays ABN 34 619 315 847 | ATIA Accredited A14252

CONTACT US

Email: bookings@bkbholidays.com

Phone: 1300 357 057

Agents only phone: +61 8 6382 2166

Website: www.bkbholidays.com



Discover our destinations

WESTERN AUSTRALIA • NORTHERN TERRITORY • SOUTH AUSTRALIA
COCOS KEELING ISLANDS • CHRISTMAS ISLAND
BALI • SINGAPORE • VIETNAM • THAILAND

Looking for inspiration for your next holiday?
Visit your preferred travel agent or contact us on
1300 357 057 or **bookings@bkbholidays.com**



Unit 2, 69 Grantham Street, Wembley WA 6014
PO Box 52, Wembley WA 6913
Phone: +61 8 6382 2166 (Agents only)
Phone: 1300 357 057
Email: bookings@bkbholidays.com
ABN 3461 9315 847 and ATIA Accredited A14252

www.bkbholidays.com

YOUR TRAVEL AGENT:

A large white rectangular area intended for a travel agent to provide their name and contact information.